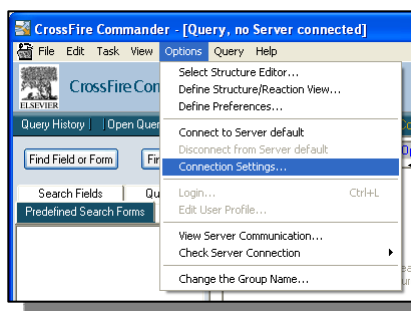
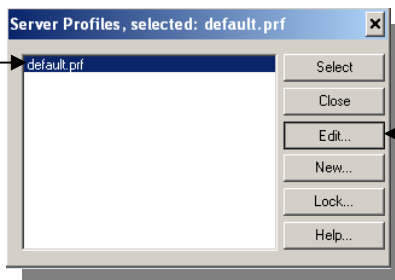


## Installing CrossFire on DCU PCs

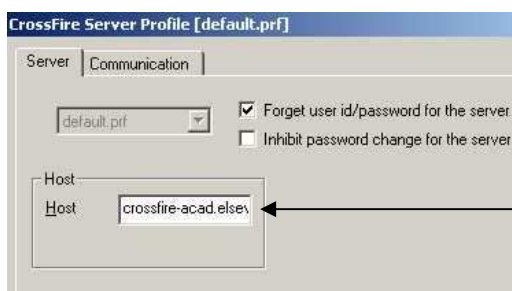
1. Go to <http://www.info.crossfirecommander.com/downloadcommander.asp> and download the latest version of CrossFire
2. Double-click on the installation file and follow the instructions
3. When you are asked for it, enter the group name **DCU**.
4. When installation is completed, double click on the CrossFire Commander icon on your Desktop.
5. You will be asked for a username and password. Click on **Cancel** to close this box.
6. Click on **Options > Connection Settings**.



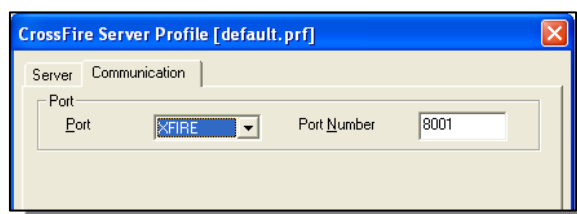
7. Select **default.prf** and click on **Edit**.



8. Check that the **server host** is **crossfire-acad.elsevier.com**



9. Click on the **Communication** tab. Check that the **Port** is **XFIRE** and the **Port Number** is **8001**.



10. Click on **Firewall Parameters**.

Enter these details:

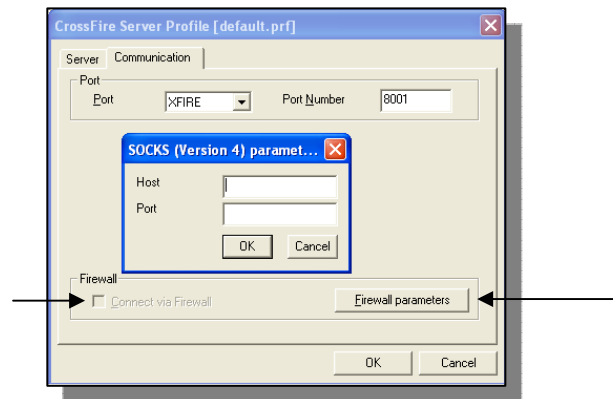
Host: **proxy.dcu.ie**

Port: **1080**

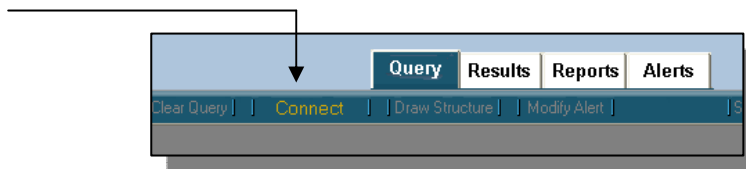
Click on **OK**.

Select **Connect by Firewall**.

Click on **OK** and **Close**.



11. Click on **Connect**. You do not need a username and password. Crossfire is now fully set up. You can delete the installation file from your desktop.



**Beilstein** is selected by default. Click on **Select Database** if you want to search **Gmelin**.

