



Engaging Content
Engaging People



Towards a Common Semantic Data Model to Support *Slaintecare* in Ireland: Tackling the Interoperability Problem

Dr. Subhashis Das, MSCA ELITE-S Fellow, CeIC, DCU
Dr. Pamela Hussey, Associate Professor, CeIC, DCU

HOST INSTITUTION



Trinity College Dublin
Coláiste na Tríonóide, Baile Átha Cliath
The University of Dublin

HOST INSTITUTION



Maynooth University
National University
of Ireland Maynooth

FUNDED BY



About ELITE-S

- ELITE-S relates to providing leadership for ICT standardisation in the EU offers training and scholarship through Marie Curie. 16 fellowships awarded across the EU
- Our focus is on creating a common semantic data model (CSDM) and providing access to open source resources for knowledge sharing and advancing data interoperability.

<https://elite-fellowship.eu/>



About ADAPT and CeIC

Adapt SFI Research Centre in Dublin with experts producing ground-breaking digital media innovations

<https://www.adaptcentre.ie/>

- CeIC DCU focuses on HOW to solve problems with data interoperability for *eIntegrated* care in order to improve health and wellbeing <https://www.ceic.ie/>



Engaging Content
Engaging People

Researchers



Dr. Pamela Hussey
Centre Director
School of Nursing, Psychotherapy &
Community Health



Subhashis Das
PostDoctoral Researcher

- Nursing
- NSAI-HISC
- Funded Investigator of ADAPT
- Associate Prof. Faculty of Health Sc.

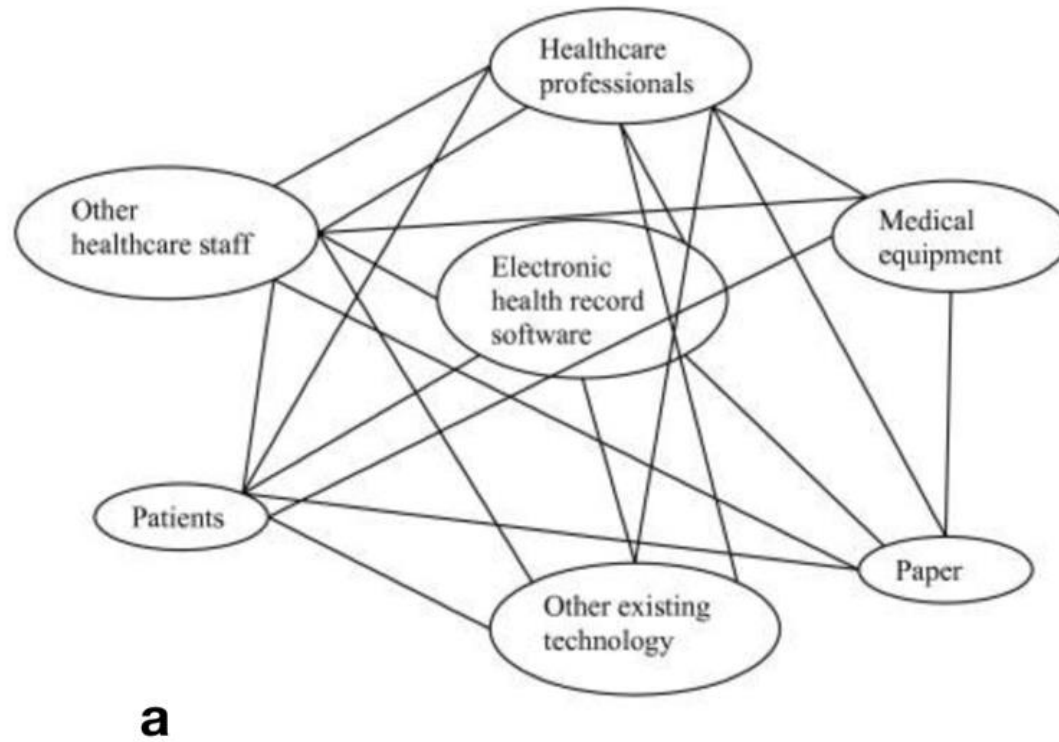
<https://www.dcu.ie/snpch/people/pamela-hussey.shtml>

- Ontology
- EU project International Patient Summary
- Research Fellow CeIC & ADAPT

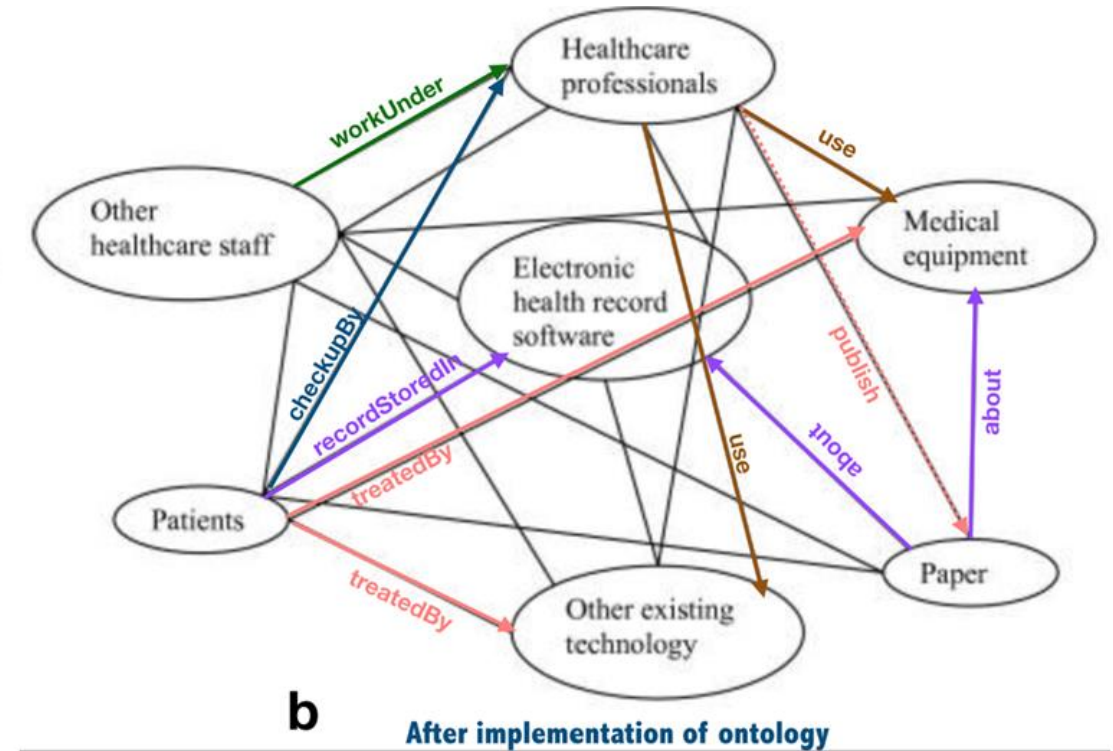
<https://www.dcu.ie/snpch/people/Subhashis-Das.shtml>



Existing Approach

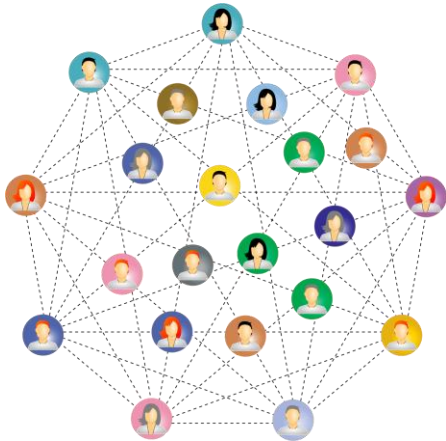


CSDM Approach





- Knowledge translation on standards NSAI HISC - CEN TC 251 & ISO 215
- Design for interoperability using different standards at different junctions of the project lifecycle.



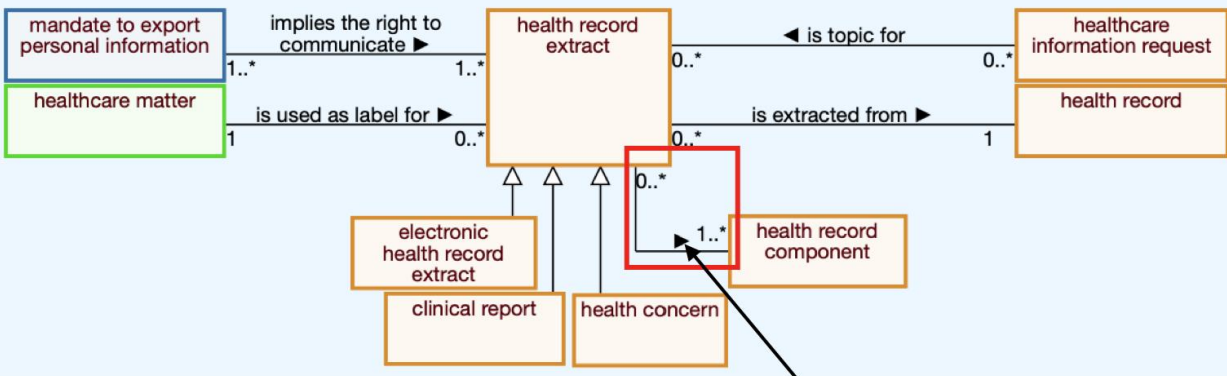
- Building on existing experts
- Task Force ISO 13940
- Tooling for demonstrators on open standards for interoperability

The CSDM seeks to



- Conduct ontological scrutiny of the standard ISO 13940 Consys UML model <https://contsys.org/page/default>
- For example in Consys the explicit relationship name for use in a system needs to be identified in our case we provide the following example

Missing Link



Missing relationship name

Explicit Link

Description: health_record_extract

Equivalent To +

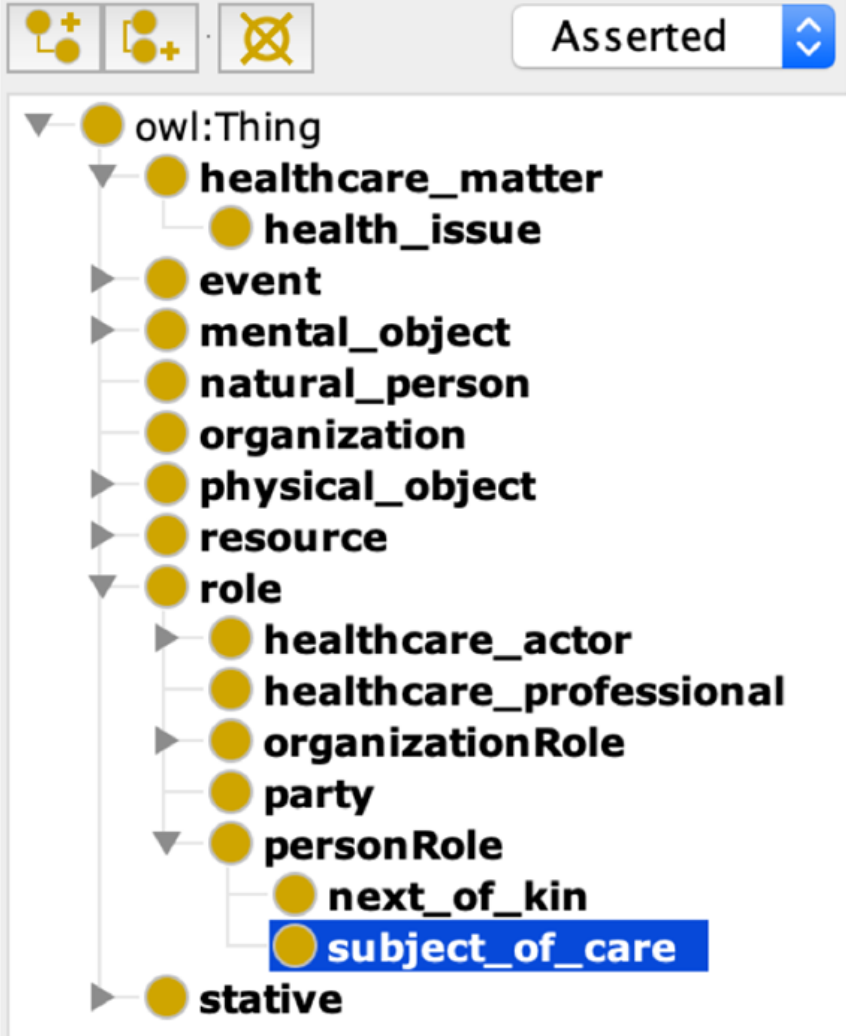
SubClass Of +

- extracts **min 1** health_record_component
- isExtractedFrom **exactly 1** health_record
- mentalObject

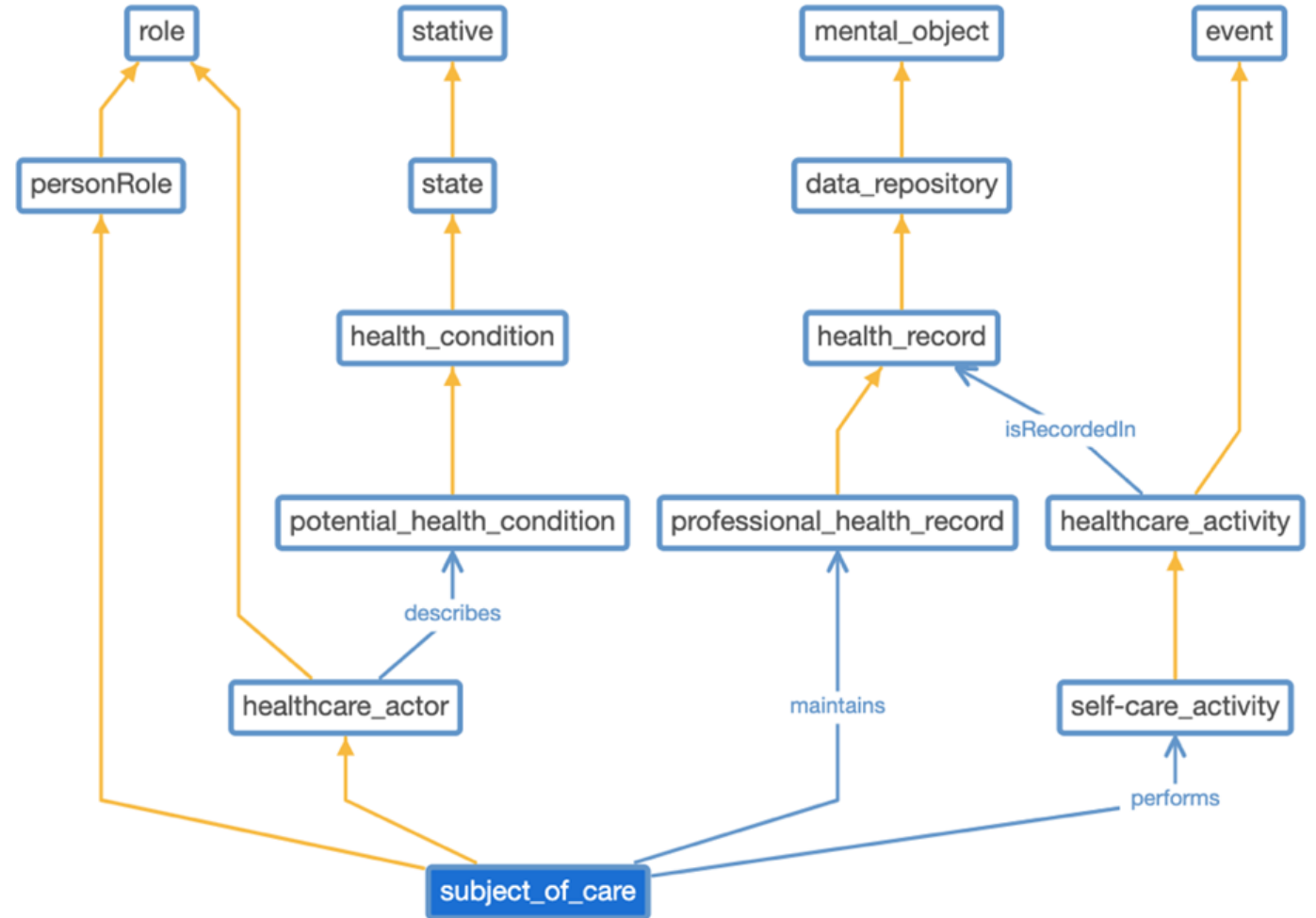
The CSDM seeks to



Class hierarchy: subject_of_c ? [] [] [] []



Top-Level Alignment



Explicit relationship

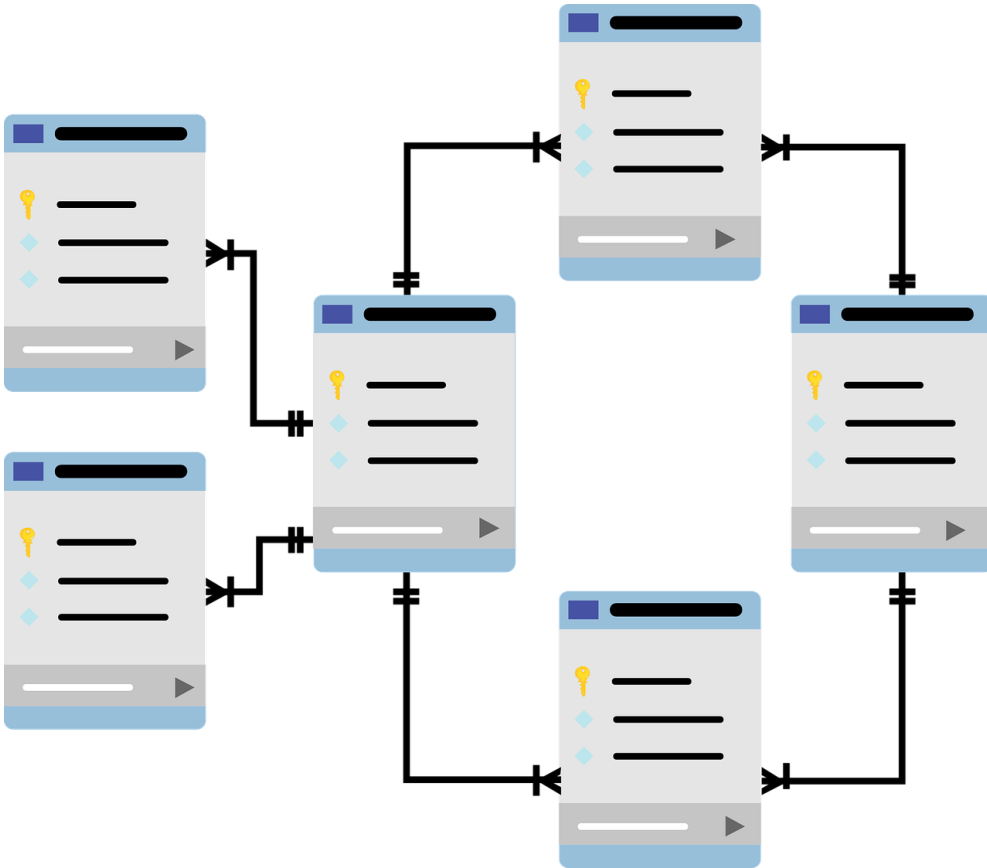
Standards in use in this Research



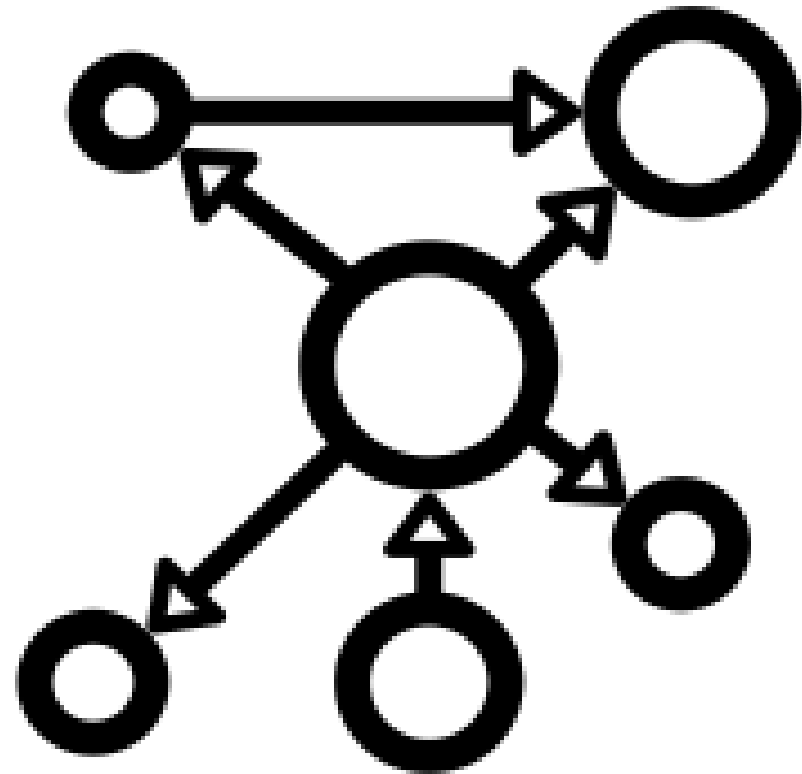
Standards & Techniques	Category	Framework Development Utility
ISO 22272	Enterprise	Used to define Business mission aims and objectives , conceptual model and capacity building
Contsys ISO 13940 https://contsys.org/	Computer	Overarching ontology framework designed in OWL as a formalised web ontology (publish on May 2020) https://contsys.org/pages/Guest%20blog/FormalOntology
HL7 FHIR v.4 https://hl7.org/FHIR/	Computer	Used to specify Observation, MedicationStatement, MedicationAdministration, Medication DiagnosticReport, Patient
EHRcom ISO 13606	Engineering	Reviewed in terms of harmonisation of HI standards to describe distribution of objects and applications across platforms
IHE CCR https://www.astm.org/Standards/E2369.htm	Information	Provides a patient health summary standard which facilitates timely and focused transmission of information across and between health professionals involved in the delivery of patient's care
Snomed-CT ICNP	Information	Formalised reference terminologies used for semantic mapping of concepts in health care systems
Graph DB http://graphdb.ontotext.com/	Engineering	Used as a specification with common functions providing a technology-neutral architectural framework and database support



- Relational databases in existence and GraphDB linkage



Relational Database



Graph Database



- Provide a summary of dissemination links for further reading

Linking with original task force participants through social media blog is available from <https://contsys.org/pages/Guest%20blog/FormalOntology>

- Full formal ontology version 1.1 has been published and is available on bio portal <https://bioportal.bioontology.org/ontologies/CONTSONTO/?p=summary>

- ADAPT McGlinn K. and Hussey P. paper on analysis of demographic data in the domain to support semantic uplift <https://www.ncbi.nlm.nih.gov/pmc/articles/PMC7303677/>



Engaging Content
Engaging People

Research Partners



Dr. Pamela Hussey
Centre Director
School of Nursing, Psychotherapy &
Community Health



Subhashis Das
PostDoctoral Researcher



Sharon Farrell
Project Co-ordinator
School of Nursing, Psychotherapy &
Community Health

CeIC



Thank you!

This research has received funding from the European Union's Horizon 2020 research and innovation programme under the Marie Skłodowska-Curie grant agreement No. 801522, by Science Foundation Ireland and co-funded by the European Regional Development Fund through the ADAPT Centre for Digital Content Technology grant number 13/RC/2106 and [DAVRA](#)



Engaging Content
Engaging People

www.adaptcentre.ie

FUNDING BY



European Union
European Regional
Development Fund

