



Ollscoil Chathair
Bhaile Átha Cliath
Dublin City University



POSTGRADUATE GUIDE

TAUGHT PROGRAMMES

2021



Contents

Welcome from the President	02
Studying in Dublin	04
Why Go Further?	04
A Research Intensive University	05
Inspiring Academics	06
Graduate Stories	08
Employability and Career Development	10
International Community	12
Life at DCU	14
Our Campuses	15
Campus Facilities	16
Health and Fitness	18
Accommodation	19
Student Services and Supports	20
Entry Requirements	22
English Language Requirements	23
Postgraduate Programmes	25
Humanities and Social Sciences	26
DCU Business School	28
Science and Health	29
Engineering and Computing	30
DCU Institute of Education	31
DCU Connected - Online Learning	32
Springboard+ Courses	32
Applying to DCU	33
Finance and Funding	34
How to Get to DCU	35

Welcome from the President

Welcome to DCU, Ireland's Sunday Times University of the Year 2021. We are a young, ambitious and innovative university with a mission to 'transform lives and societies'. We are proud to rank among the Top 100 of the world's young universities (QS and THE rankings) and among the top 2% of higher education institutions globally.

The postgraduate programmes that DCU offers will allow you to develop the knowledge and skills you need to flourish in a fast-changing world. Whether you wish to move forward in your career, advance in an area you are passionate about, or change career paths completely.

Our primary goal is to provide a 'transformative student experience' for everyone who attends the university. We are known for our innovative approach to Teaching and Learning, and for our teachers' personalised 'human touch' approach.





All of our programmes are based on world-class research. DCU is home to leading research centres in areas such as educational assessment and evaluation, bullying prevention and human rights, cellular biotechnology, neurotherapeutics, sensors, plasma technology, biomedical diagnostics, machine translation, cloud computing and data analytics. We are a member of the European Consortium of Innovative Universities (ECIU) and of the Young European Research Universities Network (YERUN). Our partnership with Arizona State University (ASU) recently resulted in the creation of Biodesign Europe, a new centre focused on creating solutions to major challenges.

Since its foundation, DCU has benefitted from a dynamic and highly productive relationship with enterprise. This helps us to ensure that our programmes stay at the cutting edge, and are highly relevant to today's workplace. This is certainly a factor that has given DCU graduates the highest employability rating in Ireland.

DCU is also known for its vibrant and diverse campuses. The university hosts more than 2,800 international students from 120 countries. DCU can also proudly boast of its superb sports complex, with a 25-metre swimming pool, our renowned performing arts centre, The Helix, and our new Student Centre, the U. More than 130 DCU student clubs and societies add greatly to a vibrant social environment.

I hope this prospectus gives you a clear picture of all that we offer our postgraduate students. I would particularly encourage you to read the testimonials of our graduates, who explain what postgraduate study at DCU has meant for them. You can also find a wealth of additional information and content at dcu.ie/postgrad.

Thank you for your interest in DCU and I hope I will have the opportunity to welcome you here in person, in the near future.

Prof Daire Keogh
President, Dublin City University

DCU delivers over 120 programmes to almost 17,500 students across its five faculties.



Studying in Dublin

Whoever you are and wherever you are from, the city of Dublin probably doesn't need much introduction.

From its museums and galleries, to its historical landmarks, it is rich with history. From its bars, nightclubs and music venues, to its cutting edge range of cafes and restaurants, it is very much part of the 21st century. The skyline comprises an eclectic mix of Croke Park Stadium, Saint Patrick's Cathedral, The Custom House, Convention Centre, Ha'Penny Bridge, Spire of Dublin and so much more.

Dublin provides a great venue for your success. With the most distinctive of Irish identities, it is also very much part of Europe. Whilst there are a whole variety of metropolitan experiences, it's on the threshold of a rural idyll. At DCU, our three very different, but complementary campuses provide solitude from the hustle and bustle of city life. However you choose to engage with the city, the Dublin Bus, DART, Dublin Bikes and LUAS transport system will get you around quickly, safely and cheaply.



Why go further?

Some people undertake postgraduate studies to obtain that professional accreditation. Others do so because they are passionate about an issue and postgraduate research provides the structured, supportive environment in which to follow that passion.

Whatever programme you choose, our dedicated academic staff will inspire you to discover new ways of thinking about your subject. Our academics and research teams are innovators making a global impact and addressing the major challenges facing the world today, and you will be part of that journey here at DCU.

Throughout your programme, our careers service will be on-hand to guide you through postgraduate job opportunities. We provide the very best facilities and support to ensure that you get what you want out of your postgraduate experience. Whatever your reason to go further, go further with DCU.



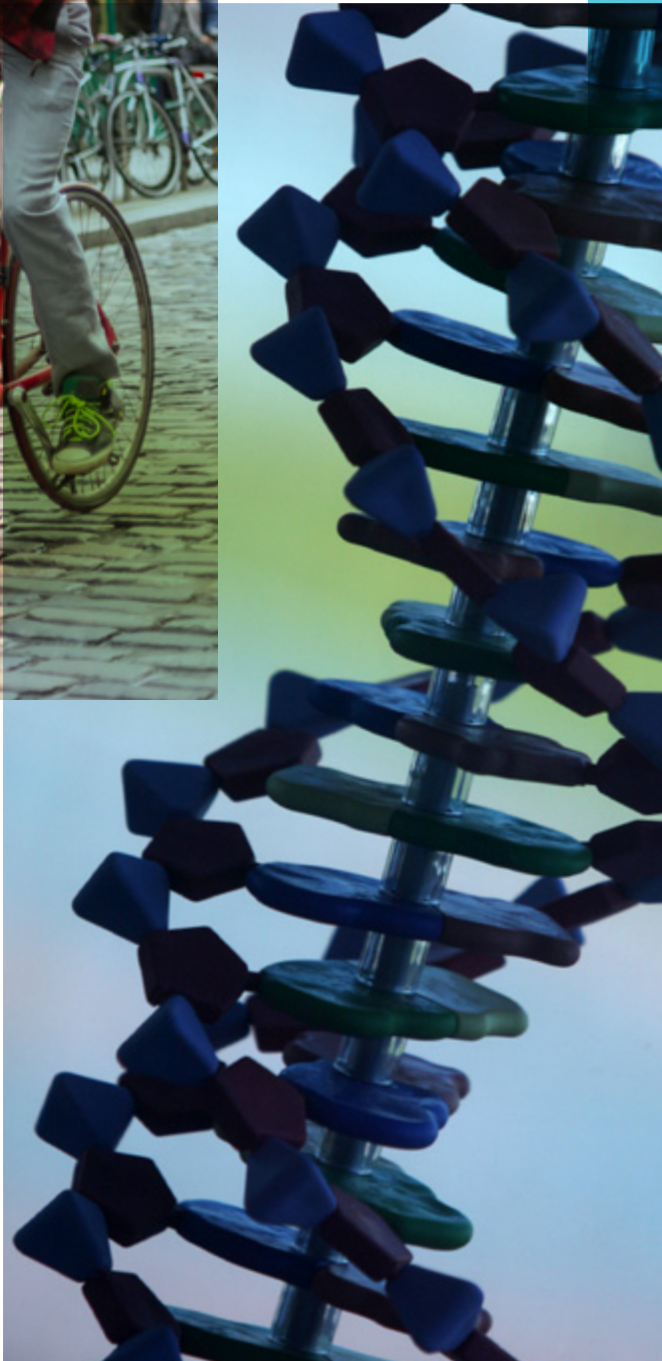
A Research Intensive University

Research and Innovation at DCU stems from the academic excellence of its five faculties, coupled with a passion for translating knowledge into innovations for economic and societal benefit.

We recognise that international collaboration is essential in order to make significant and sustained advances in tackling some of the major research challenges facing the world today. We promote and support international research collaboration while also taking particular account of geo-political developments.

Here at DCU we bring together world-leading multi-disciplinary teams of researchers, capable of addressing significant challenges to generate innovative solutions, and who have access to world-class infrastructure and facilities.

DCU has several specialised research centres and hosts others that involve collaborations with other higher education institutions and industry.



Inspiring Academics

Here's just a small selection of the talented people who have recognised that DCU is the place to pursue an enriching academic career that will not only transform students' lives, but make a lasting difference across the globe.



Prof Turlough Downes FACULTY OF SCIENCE AND HEALTH

Prof Turlough Downes has spent his whole life reaching for the stars. As a child he remembers gazing up at distant constellations in the night sky. And in his current role as Astrophysicist and Professor in the DCU School of Mathematical Sciences and Director of the Centre for Astrophysics and Relativity (C-fAR) he... well, he gazes up at distant constellations in the night sky. Of course, these days his research has a bit more focus; in particular, unravelling the mysteries of how stars are formed. And because telescopes can only show so much, a huge amount of computation is needed to run simulations based on the data collected, for which Prof Downes uses supercomputers provided by an EU organisation called PRACE. "I use a mixture of theory, observation and simulation to figure out the characteristics of star-forming regions. The theory is what we can work out about the physics of how stars form, and we develop that over time, helped by observations from telescopes. Then we can push our knowledge even further by building simulations to test out lots of different ideas about what might be going on."

Along with his colleagues, Prof Downes' research covers a broad range of extra-terrestrial aspects, from black holes to general relativity and the physics of gravitational waves. Prof Downes and his colleagues in C-fAR also work closely with students on the MSc in Astrophysics and Relativity.

We are proud to have world-leading academics that are experts in their fields, providing research-enriched teaching that sits at the core of the DCU student learning experience.

Prof Gary Murphy FACULTY OF HUMANITIES AND SOCIAL SCIENCES

Prof Gary Murphy is Professor of Politics in the School of Law and Government. He has published extensively on the politics of modern Ireland. Prof Murphy is a renowned authority on the regulation of lobbying. His work has received considerable external recognition and his research has been funded by the Irish Research Council, the Irish Department of the Environment, and the Fulbright Commission. He has appeared before a number of Irish Parliamentary Committees to speak on lobbying regulation, electoral reform, and parliamentary inquiries, and his work has been cited in both Dáil Éireann and Seanad Éireann. He appears regularly in the Irish print and broadcast media and is currently engaged in a long term biographical study of the former Taoiseach and Fianna Fáil leader Charles J. Haughey.





**Assistant Prof
Shirley Coyle**
**FACULTY OF ENGINEERING
AND COMPUTING**

Dr Shirley Coyle is an Assistant Professor in the School of Electronic Engineering, DCU. She graduated with a BEng in Electronic Engineering from DCU in 2000, and worked in Siemens Ireland Ltd and Siemens AG, Munich for two years as a Telecoms Engineer. In 2005, she graduated from NUI Maynooth with a PhD in Biomedical Engineering, developing the first optical-based brain-computer interface. From 2001 until 2008 Dr Coyle studied part-time at the Grafton Academy to receive a Diploma in Fashion Design, and also worked as a fashion design tutor there.

From 2005 until 2015 she worked in the National Centre for Sensor Research in DCU developing wearable sensors and smart textiles. This included pioneering work in creating the first wearable chemical sensors to analyse sweat during exercise. Dr Coyle was a Research

Fellow and Team Leader of Wearable sensors in the INSIGHT Centre for Data Analytics. During that time, she had the honour to serve on DCU's Governing Authority from 2011 until 2015.

Dr Coyle continued postgraduate studies in Enterprise, Entrepreneurship and Innovation in UCD's Innovation Academy in 2017, and she founded her own consultancy business in the area of wearable technologies from 2018 until 2019. Since 2019 she has been working as Assistant Professor in the School of Electronic Engineering, DCU. She designed a new master's module "Research, Design, Innovation and Project Planning". Dr Coyle is Programme Chair for one of DCU's exciting new undergraduate degrees, BSc in Global Challenges which starts this September.

Prof David Collings
DCU BUSINESS SCHOOL



David Collings is Professor of Human Resource Management and Associate Dean for Research at DCU. He has been named by HR Magazine as one of the Most Influential International Thinkers in the field of HRM four times (2014-2017). His research and teaching focuses on talent management and global staffing, and he has consulted with a number of leading global organisations in these areas. Prof Collings is joint Editor in Chief at the Journal of World Business. He is the former editor of the Human Resource Management Journal and the Irish Journal of Management, and is permanent Chair of the EIASM workshop on talent management. Prof Collings is also a co-director of the Leadership and Talent Institute at DCU Business School.

Dr Eithne Kennedy
**DCU INSTITUTE OF
EDUCATION**

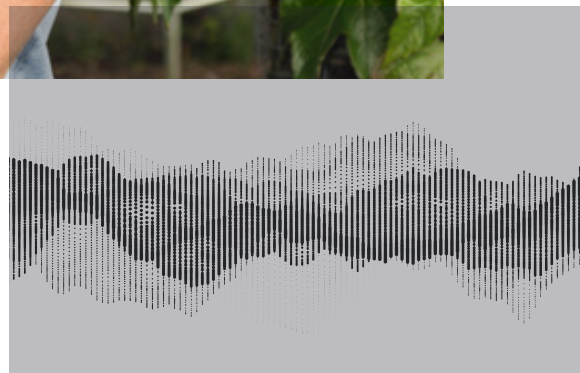
Dr Eithne Kennedy is a Teacher Educator (Literacy Studies) and Programme Chair of the Master of Education in Literacy Professional Practice (MEdLPP) in the School of Language, Literacy and Early Childhood Education, DCU Institute of Education. As director of the Write to Read research initiative, Dr Kennedy also works collaboratively with schools in disadvantaged areas to create powerful literacy environments that motivate and engage children as readers, writers and thinkers. This research has received national and international awards and fellowships including the International Literacy Association's Outstanding Doctoral Dissertation Award (2010), DCU President's award for Engagement (2014), Naughton Fellowship (2016) and



the Dobbin Fellowship (2017). She served on the National Council for Curriculum and Assessment (NCCA) Expert Advisory Group for literacy curriculum renewal (2012-2016) and has co-authored several NCCA commissioned reports, most recently: Writing Pedagogy in the Primary School: Knowledge, skills and processes of writing, Kennedy & Shiel, (2019). Other publications in the field include: Raising Literacy Achievement in High-Poverty Schools: An Evidence-Based Approach (Routledge, US, 2014) and a range of papers on literacy research, policy and practice. Dr Kennedy is a past president of the Literacy Association of Ireland and a current executive committee member.



André Bastié
MSc in Electronic Commerce
 CEO and Co-Founder, Happy Scribe Ltd



When it came to choosing my Masters, I had two criteria: industry connections and interaction with academic staff. DCU was a “no brainer” as it is ultra-connected to industry, and the relationship between the academic staff and the students is amazing.

Prior to the MSc, I did a Bachelor of Business Administration but taught myself programming. I thought that this Masters was a good balance between my undergraduate and my passion for the tech industry.

In terms of the MSc, the standard of lectures was second to none and I really

enjoyed evolving in a very competitive and ambitious environment. As part of the Next Generation Management module I had to transcribe a large amount of interview content for a research project on social entrepreneurs. It was painful and time-consuming, so the idea for Happy Scribe, my start-up company was born.

Happy Scribe can transcribe from speech to text in almost all type of audio and video formats, using voice recognition technology within a few minutes. It is designed to help researchers and journalists do their job better.

The Masters has helped develop my career and I apply the knowledge and skills I gained from the programme to my work on a daily basis.

I would definitely recommend the MSc in Electronic Commerce to anyone with an interest in the ICT industry.

**It requires a lot, but
 it might be the best
 investment you'll make!**

MSc in Education and Training Management (E-Learning)

The learning I gained from the Master's helped me lead the hospital's postgraduate education team through the flip to emergency remote teaching during the first wave of Covid-19, and to produce a number of educational and morale-boosting videos. From a personal perspective, having a Master's in eLearning has helped me secure a promotion, but more importantly it has taught me to think differently and bring some creativity to what I do.

and hands-on learning environment where learning from classmates with various professional backgrounds is as important as learning from lecturers with a wealth of knowledge and personal experience! The support I received during this programme was second to none, so much so that I have published some of my assignments and continued my learning as a PhD student.

I would encourage anyone to stop thinking about applying and just apply!

GRADUATE STORIES





Before joining Dublin City University, I had worked as a developer and business analyst in a consulting organisation in India for 12 years and my experience included working on projects in the banking and financial services domain.

Sowmiya Doraiappan

MSc in Financial Mathematics

When I moved to Dublin to join my husband, I got to know about the MSc in Financial Mathematics (DC704) at DCU. I found the combination of mathematics and finance in the curriculum interesting, and I believed that the program would widen my knowledge in the field of finance and introduce me to new areas of mathematics. The one-year duration of the program was very convenient for me and I decided that it was the opportune moment to pursue this master's degree.

In this program, I enjoyed learning about how probability theory and stochastic calculus pave the way for numerous financial concepts, such as asset pricing and financial modelling. The practical modules introduced me to numerical

methods and programming in MATLAB and R in the context of analysing financial data and pricing financial instruments. The lectures were engaging and the interactions with faculty members and classmates were enriching experiences. The many evenings I spent at the DCU library browsing through reference books and working on assignments were really enjoyable.

Working on the master's thesis in the final semester taught me how to approach a research problem and put into application what I had learnt during the previous two semesters. It also helped me understand the importance of academic writing for presenting the findings of my thesis.

The experience at DCU ushered me into a new world of mathematics and finance and kindled my interest to pursue research in related fields. More importantly, this program gave me the confidence I needed and prepared me to follow my dream of a full-time research career.



Employability and Career Development

DCU Careers Service is here to help you build on the knowledge, expertise and confidence you gain through your postgraduate study so that you can develop your employability skills and effectively manage your career progression.

DCU graduates continue to be highly sought-after by top national and international companies. Our award-winning Careers Service ensures a tailored approach to help you connect with employers, develop your career management skills and navigate your career.

Professional Development opportunities include:

- Skills Sessions on topics such as Careers Pathways from Postgraduate Programmes; Job Search Techniques; Application Process; Interview Preparation
- Jobs Board advertising a wide variety of opportunities with companies ranging from local SMEs to large global corporations
- Career Clinics and Consultations
- Employer Events including presentations, career fairs and networking sessions
- Access to a comprehensive range of online resources from employability tips to country-specific career guides

Whether you plan to enter the workplace, transition to new roles, build your own career through entrepreneurship or avail of opportunities in emerging areas, the Careers Team will work with you to explore your options and assist you in achieving your future goals.



International Community

Whether you're from Ireland, the EU or further afield, here at DCU you'll be living and working with people from all over the world.

We have a large number of students and academics from international backgrounds, so your learning and teaching experience will place you in a truly international and stimulating environment. Studying here at DCU will open up new opportunities for you, introduce you to a global network of friends, and enable you to experience many different cultures.





DCU International Office

The International Office team, based on our DCU All Hallows Campus, is here to give you every administrative help they can as you prepare to come to DCU and throughout your time here. They offer administrative guidance and support which will help to make the application process and the overall student experience at DCU enjoyable. They have developed a comprehensive orientation programme, which should be attended by all students prior to the commencement of their studies. You will be provided with detailed information about the orientation programme before arriving at the University.

Student Support and Development

During the academic year, workshops and other events are organised in order to ensure that you do not experience any difficulties with the new education system. Details can be found at: dcu.ie/students/events

Immigration Regulations and Visa Requirements

The Department of Justice, Equality and Law Reform provides information for students wishing to apply for study visas in Ireland. For more information, visit: inis.gov.ie

Scholarship Information

DCU offers International Student Scholarships to students from several countries. You can find further details and application information at: dcu.ie/international/dcu-international-scholarships

The Irish Council for International Students provides useful information for students interested in studying in Ireland and in Study Fellowships, which are available for students from certain countries. For more information, visit: icosirl.ie

The Irish Government through the Government of Ireland Scholarship scheme, also provide up to 60 scholarships per year.

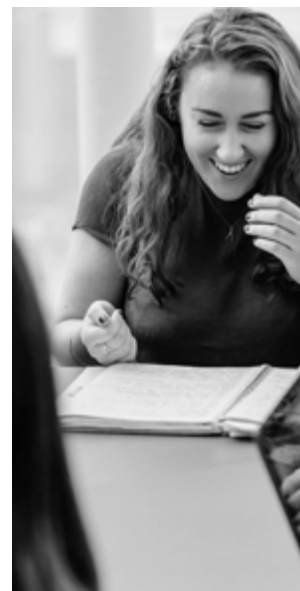
Working in Ireland after you graduate

After completing a Masters Degree, a Post-Graduate Diploma or a Doctorate Degree at DCU, international students can apply for the Third Level Graduate Programme (Stamp 1G). This enables students to remain in Ireland for up to 24 months after they graduate. During this period of time they can seek employment and work in Ireland. Full details can be found here: inis.gov.ie/en/inis/pages/student%20pathway

Life at DCU



We have a unique and vibrant culture on our campuses close to Dublin city centre. We provide state-of-the-art study facilities for your studies and everything else you need for a healthy, fun and active student life.





↑ St Patrick's Campus

Our Campuses

DCU is a multi-campus university with three academic campuses – DCU Glasnevin, DCU St Patrick's and DCU All Hallows. The DCU St Patrick's campus is home to Ireland's first and only university Institute of Education. There is a 20-25 minute walk between the DCU Glasnevin and DCU St Patrick's campuses (also accessible via public transport links) and a 3 minute walk between DCU St Patrick's and DCU All Hallows campuses.



↑ Glasnevin Campus



← All Hallows Campus

Campus Facilities



Libraries

As a postgraduate student at DCU you will have access to three world class libraries; one on DCU Glasnevin campus with one on DCU St Patrick's campus and a new library in Woodlock Hall on the DCU All Hallows Campus.

Our libraries incorporate study spaces, research hubs, meeting spots and focal points for discovery and creativity.

Everyone learns differently, which is why the libraries provide a wide variety of technology-rich study spaces, from chatty open plan areas to quiet individual and collaborative study zones.

The libraries also provide access to a huge range of print resources and support services to help you successfully complete your programme.

In addition, our website acts as a portal to a vast collection of electronic resources: e-books, e-journals, databases, theses and newspapers; all available 24/7 (internet connection required off campus).

To find out more about our libraries, visit: dcu.ie/library



Eating and drinking

The University has plenty of places to grab a bite to eat, or meet friends for a coffee. The DCU Glasnevin campus has seven restaurants/cafes located in various parts of the campus, the DCU St Patrick's campus has three venues to choose from with two venues available in the DCU All Hallows campus. For further information on locations and menus, visit: dcu.ie/catering



Security at DCU

DCU has its own private Security Service which aims to provide a safe and comfortable environment for staff and students at all times. For individual campus security information, visit: dcu.ie/students/az/security

SafeZone at DCU

If you are working late or studying alone, you have access to a free app service to give round-the-clock safety reassurance to staff and students.

SafeZone is a simple-to-use app that is designed to allow students and staff to summon security or safety assistance via mobile devices, desktops and laptops. For more information and to download the app, visit: dcu.ie/safezone

Pharmacy

Pharmhealth Pharmacy is situated at the heart of the DCU Glasnevin campus. The pharmacy is open to students, staff, local residents and visitors and opens 8.30am to 6.30pm Monday to Thursday and from 8.30am to 6.00pm on Friday.

The Helix

The Helix is a multi-purpose venue located on DCU Glasnevin campus providing a wide range of entertainment events including music, comedy, ballet, theatre, family shows and much more. Special discounted rates for students are offered for some shows – for details call in, check out the website or phone.

T: **01 700 7000**
E: info@thehelix.dcu.ie
W: thehelix.ie





Health and Fitness

You want to be part of a university that encourages physical wellbeing and a healthy lifestyle. We want you to have the opportunity to enjoy all the benefits of exercise, fitness, dance and sport while you study with us.



DCU Sports Complex, located on the DCU Glasnevin campus, is a state-of-the-art facility, incorporating health, wellness and sports to meet all your exercise and leisure needs. Membership is available to DCU students on an academic, yearly, or half yearly rate with membership including access to the pool, spa facilities, fitness centre and group fitness classes.

DCU Sports Arena, also located on the DCU Glasnevin campus, hosts a number of sports, such as super league basketball, badminton and volleyball and can facilitate a number of other activities. We also have a climbing wall, two squash courts, a racquetball/handball court and several studios. There are multiple sports grounds, a high performance centre and a soccer centre.

The DCU St Patrick's campus has a number of sports facilities including a fitness studio, two sports halls, a GAA pitch and a soccer pitch.



Accommodation

College Park, located on the DCU Glasnevin campus, offers a dedicated block of accommodation for taught postgraduate students, available on a 9 month occupancy licence (September - May).

As a Postgraduate student, there are two separate types of rental contracts on offer which would fall in line with the length of enrolled studies, whether 9 months or 50 weeks.

9 Month Accommodation

9 month rental contracts which fall in line with the academic calendar (September-May) are offered across both our Glasnevin and All Hallows campuses.

Based in Glasnevin, our College Park Postgraduate accommodation is based within the superior double ensuite blocks. Here, each unit comprises 5 double ensuite bedrooms with both WiFi and fixed line internet access. The rooms also come inclusive of a study desk and chair, wardrobe and shelving unit and bedframe with mattress. Each apartment unit has a shared kitchen

and living area to be used by all five residents.

In addition, there are a limited number of rooms available on a 9 month occupancy licence on DCU All Hallows campus. All Hallows is situated in Drumcondra village within easy reach of the DCU Glasnevin and DCU St Patrick's campuses by foot, bicycle or public transport. There are 63 bedrooms available in Purcell House, on the All Hallows campus to students at all levels of study. Accommodation here is a mixed offering of both single and double bedrooms (single occupancy only) with either ensuite or shared bathroom facilities. Each bedroom has a study area, WiFi and fixed line internet access (internet cable not provided) as well as a bedframe with mattress and wardrobe/storage area. There is a large communal kitchen and shared lounge areas.

50 Week Accommodation

Based on a length of study from August-August, students are welcomed to our Postgraduate accommodation blocks on the Glasnevin campus. Here, there are 37 apartment units of varied size from one bedroom up to 5 bedrooms (each individual bedroom is ensuite). Each unit has its own kitchen and living area to be shared between tenants.

The accommodation is let on a 50 week licence only, the majority of rooms being let as single bedrooms, however a limited number of double rooms are also available.

For more information on DCU accommodation, visit:

dcuaccommodation.ie/accommodation/dcu-post-grad-students





Student Services and Supports

Student Advice Centre

The Student Advice Centre is the hub for all information on student supports at DCU. We offer advice and guidance on all areas, from settling in to university to exam preparation and financial assistance. Students can make a one-to-one appointment or drop in to see a Student Advisor.

We also offer life coaching on a one-to-one basis or through the Pathways to Success programme. For further information, visit: dcu.ie/advice or email student.support@dcu.ie

Student Health Service

The Student Health Service provides on-campus primary healthcare to students of DCU. We take care of the physical, psychological and social aspects of student health and offer a range of activities within the area of health promotion. For further information, visit: dcu.ie/health

Counselling and Personal Development Service

We provide a professional and confidential Counselling and Personal Development Service which is available to all registered postgraduate DCU students. The service is staffed by counselling psychologists/psychotherapists and psychotherapists at an advanced stage in training. We offer one-to-one counselling, professional crisis support and expert advice on a range of personal and psychological health and developmental issues. For further information and to register with the service, visit: dcu.ie/students/counselling

Disability and Learning Support

Our aim is to promote equality of access for learners with disabilities, specific learning difficulties, mental health difficulties and on-going medical conditions. In line with best practice guidelines, we coordinate a range of supports for students who are registered with the service to ensure they have equity of access to their studies. For further information, visit: dcu.ie/disability



Discover DCU

Discover DCU is a series of ten short interactive courses designed to help get you settled in and introduce you to the tools and skills you need to succeed at university. Work through each of the courses at your own pace and complete the simple activities to finish each course. For further information, visit: dcu.ie/library/online-tutorials/learning-materials

Learning Support

DCU's Learning Support service offers a range of workshops and one-to-one meetings to help students with various aspects of learning at third level. We also offer extensive online resources, which can be found at: dcu.ie/studentlearning

Loop, DCU's virtual learning environment, compliments face-to-face teaching at DCU and provides flexible access to programmes on and off campus. Lecturers can use Loop to direct you to resources such as lecture notes, video clips, podcasts, online journals, practice quizzes and discussion forums.

Students' Union

The Students' Union is an essential part of college life. DCUSU is widely renowned for providing opportunities, helping create change, facilitating at a local and national level as well as organising famous events on and off campus, creating memories you will always have with friends you will never forget. Our approachability is key for you the student when things go wrong, when things are going great and indeed when you just need someone to talk to on anything from welfare to academic issues. For further information, visit: dcusu.ie

Postgraduate Society

The DCU Postgraduate Society aims to promote Postgraduate student life and community, both within and outside of DCU. It is a social club for everyone involved in Postgraduate study. It acts as a platform to exchange ideas, share knowledge and organise social events.



Careers Service

See page 11 for information on DCU's award winning Careers Service or visit: dcu.ie/careers

International Office

See page 13 or visit: dcu.ie/international

Spirituality

The Chaplaincy team plays a significant role in building up a sense of community on campus and are available to listen to and support students. The Interfaith Centre is the focal point of religion and spirituality, a place where people of diverse cultural and religious backgrounds meet to chat over a free cup of tea or coffee, pray or take some quiet time. There is a Sacred Space for religious celebrations or group gatherings, a Quiet Room for relaxation and prayer, Muslim prayer rooms and meeting rooms for small student groups and societies.

Crèche

The Magic Days crèche in DCU provides a professional day-care service for the infants and young children of DCU students and staff. Located adjacent to car park no. 2 on the Glasnevin campus, the crèche caters for 55 children and is

open from 8.15am-6.10pm Monday to Thursday and 8.15am-5.45pm Friday. The Student Support and Development office in DCU offers a crèche subsidy to lone parents who are full-time students. For further information, please contact Ciara Fitzgerald or Sharon Kelly. T +353 (01) 700 5200
E creche@dcu.ie

Car Parking

There are four main car parking facilities available on the DCU Glasnevin campus for staff, students and visitors to the University providing just under 1400 spaces. DCU St Patrick's and DCU All Hallows campuses have limited parking capacity with both requiring a valid DCU Parking Permit. For further information and car park rates, visit: dcu.ie/students/parking

Computer Services

Information Systems and Services (ISS) provide computing and networking facilities for use by students of DCU. As a student of DCU, you will be provided with free wireless internet all over campus, 7GB+ of email storage in your DCU account, online document storage, shared access to hundreds of desktop computers across campus, printing facilities and many other services. For further information, visit: dcu.ie/iss

Entry Requirements

In general, the entry requirement for all taught graduate programmes is a primary degree of at least Second Class Honours standard from a recognised university or degree awarding body.

The requirements may be higher for some programmes and programme pages should be reviewed for detailed information. In some cases, approved equivalent qualification from a recognised professional body will suffice. As part of the selection process an interview may be required. Applicants are asked to familiarise themselves with entry requirements and application information for their programme(s) of choice before making an application.

Exceptionally, candidates not possessing the above entry qualification may be admitted provided that they can demonstrate exceptional aptitude or ability and/or substantial relevant work experience in a field related to the programme.

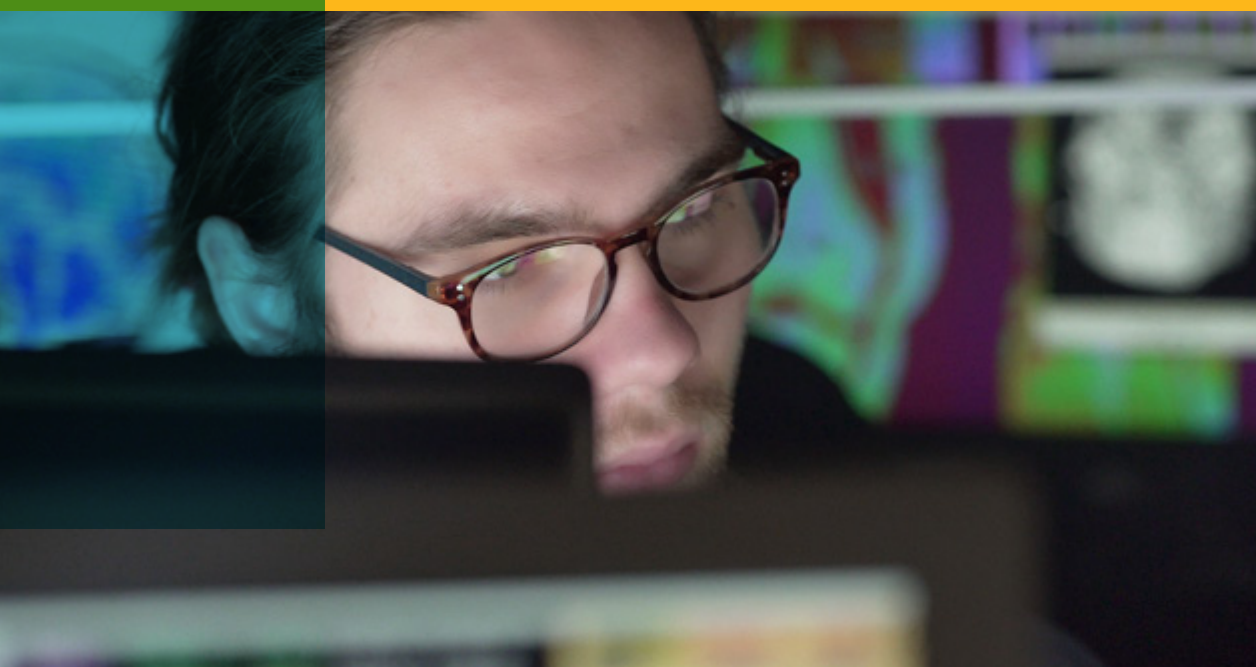
The entry requirements for all programmes can be found on each of the course webpages. On each course page, there is a section called "Requirements", which will outline the requisite entry criteria, the application deadline and all other relevant information needed for making an application for a course. Prospective applicants for a specific graduate taught programme should consult the online prospectus: dcu.ie/courses



English Language Requirements for non-Native Speakers of English

In the case of all applications, evidence **MUST** be provided of competence in the English language. The list of minimum standards in English can be found [here](#), DCU English Language Requirements. Please visit Faculty specific English language requirements for information on more specific English language requirement information for postgraduate applicants.





Our Postgraduate Programmes

We understand that there's a lot to think about if you're considering further study, so our website brings together the key information about all of our postgraduate masters programmes.

Our comprehensive postgraduate portfolio offers a wide range of options to choose from and a detailed listing of DCU's taught postgraduate programmes can be found at: dcu.ie/courses

Please refer to the website and individual programme pages for full details and intake dates.

Framework for Taught Programmes

The University operates a credit framework for all its taught postgraduate programmes. The credit framework adopted is in accordance with the internationally recognised European Credit Transfer Scheme, ECTS. Modules in our postgraduate programmes are typically 5 or 7.5 ECTS credits each.

The achievement of a Masters award currently requires 90 ECTS credits. Some of our Masters programmes include a Graduate Diploma option requiring 60 ECTS credits. In programmes with a Graduate Diploma option, those proceeding on to the Masters qualification typically are required to complete a dissertation/project worth 30 ECTS credits. The majority of our programmes, however, are straight Masters without a Graduate Diploma option.

FACULTY OF HUMANITIES AND SOCIAL SCIENCES

PROGRAMME	DURATION	COMMENCEMENT DATE	APPLICATION PROCEDURE	PAC CODE
Part-time Programmes				
MA in Children's and Young Adult Literature	Two Years	September	Apply Here	DC696
MA in Choral Studies	Two Years	September	Apply Here	DC664
MSc in Climate Change: Policy, Media and Society	Two Years	September	Apply Here	DC679
MA in Creative Writing	Two Years	September	Apply Here	DC785
MA in Data Protection and Privacy Law	Two Years	September	Apply Here	DC787
MA in Ethics	Two Years	September	Apply Here	DC688
MA in Ethics (Corporate Responsibility)	Two Years	September	Apply Here	DC689
MA in European Law and Policy	Two Years	September	Apply Here	DC698
MA in History	Two Years	September	Apply Here	DC678
LLM (Master of Laws)	Two Years	September	Apply Here	DC661
MA in International Relations	Two Years	September	Apply Here	DC609
MA in International Security and Conflict Studies	Two Years	September	Apply Here	DC630
MA in Political Communication	Two Years	September	Apply Here	DC604
MA in Social Media Communications	Two Years	September	Apply Here	DC642
MA in Theology and World Religions	Two Years	September	Apply Here	DC694
MSc sa Bhainistíocht agus Gnó Digiteach	Two Years	September	Apply Here	DC627
MSc in Public Policy	Two Years	September	Apply Here	DC649
MSc in Science and Health Communication	Two Years	September	Apply Here	DC607
MA in Refugee Integration	Two Years	September	Apply Here	DC666

PROGRAMME	DURATION	COMMENCEMENT DATE	APPLICATION PROCEDURE	PAC CODE
Full-time Programmes				
International Master in Security, Intelligence and Strategic Studies (IMSISS)	Two Years	September	Via University of Glasgow	
LLM (Master of Laws)	One Year	September	Apply Here	DC662
MSc in Climate Change: Policy, Media and Society	One Year	September	Apply Here	DC669
MA in Children's and Young Adult Literature	One Year	September	Apply Here	DC699
MA in Creative Writing	One Year	September	Apply Here	DC784
MA in Data Protection and Privacy Law	One Year	September	Apply Here	DC786
MSc in Emerging Media	One Year	September	Apply Here	DC605
MA in European Law and Policy	One Year	September	Apply Here	DC697
MA in History	One Year	September	Apply Here	DC677
MA in International Relations	One Year	September	Apply Here	DC608
MA in International Security and Conflict Studies	One Year	September	Apply Here	DC629
MA in Journalism	One Year	September	Apply Here	DC600
MA in Political Communication	One Year	September	Apply Here	DC631
MSc in Public Policy	One Year	September	Apply Here	DC648
MSc in Public Relations and Strategic Communications	One Year	September	Apply Here	DC674
MA in Refugee Integration	One Year	September	Apply Here	DC663
MSc in Science and Health Communication	One Year	September	Apply Here	DC606
MA in Social Media Communications	One Year	September	Apply Here	DC614
MA in Theology and World Religions	One Year	September	Apply Here	DC693
MA in Translation Studies	One Year	September	Apply Here	DC615
MSc in Translation Technology	One Year	September	Apply Here	DC700

Research Studies (including Masters by Research and PhD studies) can be found on the research section of the Faculty of Humanities and Social Sciences website at:

dcu.ie/humanities-and-social-sciences/research-faculty-humanities-social-sciences

DCU BUSINESS SCHOOL

PROGRAMME	DURATION	COMMENCEMENT DATE	APPLICATION PROCEDURE	PAC CODE
Part-time Programmes				
MSc in Management of Operations	Two Years	September	Apply Here	DC910
Executive MBA	Two Years	September	Apply Here	DC951
MSc in Investment, Treasury and Banking	Two Years	September	Apply Here	DC958
MSc in Management (Aviation Leadership)	Two Years	September	Apply Here	DC519
MSc in Work and Organisational Psychology/Behaviour	Two Years	September	Apply Here	DC957
Full-time Programmes				
MSc in Accounting	One Year	September	Apply Here	DC501
MSc in Digital Marketing	One Year	September	Apply Here	DC516
MSc in Electronic Commerce (Business)	One Year	September	Apply Here	DC506
MSc in Finance	One Year	September	Apply Here	DC511
MSc in Human Resource Management	One Year	September	Apply Here	DC632
MSc in Global Management (Digital Disruption)*	One Year	September	www.ipbsim.com	N/A
MSc International Accounting and Business	One Year	September	Apply Here	DC526
MSc in Management (Aviation Leadership)	One Year	September	Apply Here	DC525
MSc in Management (Business)	One Year	September	Apply Here	DC510
MSc in Management (Strategy)	One Year	September	Apply Here	DC514

* The MSc in Global Management (Digital Disruption) is unique in its format and can be studied through three paths:

1. Full-time one year programme completed at DCU Business School. This programme confers a single MSc degree from DCU (apply through PAC – PAC code TBC).
2. Spend semester one in either Universidad de las Americas Puebla in Mexico, Università Cattolica del Sacro Cuore (UCSC) in Italy or Goodman Business School at Brock University in Canada before coming to DCU in semester two. This programme confers a single MSc degree from DCU (apply at ipbsmgm.com)
3. Spend one semester in DCU and either ESB Business School at Reutlingen University, Germany OR Neoma Business School in Reims, France (apply at ipbsmgm.com)

Research Studies (including Masters by Research and PhD studies) can be found on the research section of the DCU Business School website at: business.dcu.ie/phd-programme/

FACULTY OF SCIENCE AND HEALTH

PROGRAMME	DURATION	COMMENCEMENT DATE	APPLICATION PROCEDURE	PAC CODE
Part-time Programmes				
Graduate Certificate in Relationships and Sexuality Education for People with Intellectual Disability	One Year	September	Apply Here	DC675
Graduate Certificate in Sexuality Education and Sexual Wellbeing	One Year	September	Apply Here	DC676
Graduate Certificate in Dermatology	One Year	September	Apply Here	DC741
Professional Diploma in Clinical Supervision	One Year	September	Apply Here	DC768
MSc in Astrophysics and Relativity	Two Years	September	Apply Here	DC743
MSc in Bioprocess Engineering	Two Years	September	Apply Here	DC734
MSc in Diagnostics and Precision Medicine	Two Years	September	Apply Here	DC740
MSc in Financial Mathematics	Two Years	September	Apply Here	DC761
MSc in Psychology and Wellbeing	Two Years	September	Apply Here	DC766
MSc in Psychotherapy	Four Years	September	Apply Here	DC715
MSc in Elite Sport Performance	Two Years	September	Apply Here	DC702
Doctorate in Elite Performance (Sport)	Four Years	September	Apply Here	DCD44
Doctorate in Psychotherapy	Four Years	September	Apply Here	DCD13
Full-time Programmes				
MSc in Bioprocess Engineering	One Year	September	Apply Here	DC735
MSc in Diagnostics and Precision Medicine	One Year	September	Apply Here	DC739
MSc in Financial Mathematics	One Year	September	Apply Here	DC704
MSc in Psychology (Conversion)	One Year	September	Apply Here	DC767
MSc in Psychology and Wellbeing	One Year	September	Apply Here	DC765
MSc in Astrophysics and Relativity	One Year	September	Apply Here	DC742

Research Studies (including Masters by Research and PhD studies) can be found on the research section of the Faculty of Science and Health website at: dcu.ie/science-and-health/research-centres-faculty-science-health

FACULTY OF ENGINEERING AND COMPUTING

PROGRAMME	DURATION	COMMENCEMENT DATE	APPLICATION PROCEDURE	PAC CODE
Part-time Programmes				
Access Course for the MEng in Mechanical and Manufacturing Engineering Programme	One Year	September	Apply Here	DC812
Masters Engineering Qualifier B – MEng in Mechanical and Manufacturing Engineering	One Year	September	Apply Here	DC838
Masters Engineering Qualifier - Electronic and Computer Engineering	One Year	September	Apply Here	DC830
	18 Months	January		DC831
MEng in Electronic and Computer Engineering	Two Years	September	Apply Here	DC884
		February		DC892
MEng in Mechanical and Manufacturing Engineering	Two Years	September	Apply Here	DC816
MSc in Computing (with Major Options)	Two Years	September	Apply Here	DC837
MA in Data Protection and Privacy Law: Law and Computing	Two Years	September	Apply Here	DC787
Single Module Programme - Engineering and Computing	For more information: dcu.ie/DC808	September	Apply Here	DC808
				DC809 (date of commencement) January
Full-time Programmes				
Masters Engineering Qualifier - Electronic and Computer Engineering	Continuous	September	Apply Here	DC847
		February		DC848
MEng in Electronic and Computer Engineering	One Year	September	Apply Here	DC883
	18 Months	February		DC891
MSc in Electronic and Computer Technology	One Year	September	Apply Here	DC896
		February		DC895
MEng in Mechanical and Manufacturing Engineering	One Year	September	Apply Here	DC814
MSc in Computing (with Major Options)	One Year	September	Apply Here	DC836
MA in Data Protection and Privacy Law: Law and Computing	One Year	September	Apply Here	DC786

Research Studies (including Masters by Research and PhD studies) can be found on the research section of the Faculty of Engineering and Computing website at:

dcu.ie/engineeringandcomputing/overview

DCU INSTITUTE OF EDUCATION

PROGRAMME	DURATION	COMMENCEMENT DATE	APPLICATION PROCEDURE	PAC CODE
Part-time Programmes				
Certificate in Religious Studies	One Year	August	Apply Here	DC996
Graduate Certificate in the Education of Pupils on the Autism Spectrum	One Year	September	ioe.ise@dcu.ie	N/A
Graduate Diploma in Inclusive Education, Learning Support and Special Education	One Year	September	ioe.ise@dcu.ie	N/A
Professional Diploma in Education (Ethical and Multi Denominational Education)	Continuous	September	Apply Here	DC999
Master of Education	Two Years	September	Apply Here	DC984
Masters in Special Educational Needs	Two Years	September	Apply Here	DC994
Master of Education in Autism	Two Years	September	Apply Here	DC972
Master of Education in Specific Learning Difficulties (Dyslexia)	Two Years	September (next intake 2021)	Apply Here	DC732
Master of Education in Literacy Professional Practice	Two Years	September (next intake 2021)	Apply Here	DC921
MSc in Education and Training Management (eLearning)	Two Years	September	Apply Here	DC902
MSc in Education and Training Management (Leadership)	Two Years	September	Apply Here	DC900
MSc in Guidance Counselling	Two Years	September	Apply Here	DC906
Master of Education in Early Childhood Education	Two Years	September	Apply Here	DC907
MA in Chaplaincy Studies and Pastoral Work	Two Years	September	Apply Here	DC981
Postgraduate Research				
Doctor of Education	Two Years	August/September	ioe.research-office@dcu.ie	DCE49

Research Studies (including Masters by Research and PhD studies) can be found on the research section of the DCU Institute of Education website at: dcu.ie/instituteofeducation/research

DCU INSTITUTE OF EDUCATION

PROGRAMME	DURATION	COMMENCEMENT DATE	APPLICATION PROCEDURE	PAC CODE
Full-time Programmes				
Professional Master of Education (Post Primary Education)	Two Years	August	Apply Here	DC905
Professional Master of Education (Primary Teaching)	Two Years	September	Apply Here	DC970
MA in Chaplaincy Studies and Pastoral Work	One Year	September	Apply Here	DC980

DCU CONNECTED – ONLINE

PROGRAMME	DURATION	COMMENCEMENT DATE	APPLICATION PROCEDURE	PAC CODE
Part-time Programmes				
Graduate Diploma/MSc in Management of Clean Technologies (MCT)	Two Years	September	Apply Here	DC918
		January		DC919
Graduate Diploma/MSc in Management of Information Systems Strategy (MISS)	Two Years	September	Apply Here	DC912
		January		DC915
Graduate Diploma/MSc in Management of Internet Enterprise Systems (MSIS)	Two Years	September	Apply Here	DC911
		January		DC916
Graduate Diploma/MSc in Management for Sustainable Development (MSD)	Two Years	September	Apply Here	DC913
		January		DC914
Postgraduate Single Module (PGSM)	Semester 1	September	Apply Here	DC920

Springboard+ courses provide the opportunity to obtain a university qualification at relatively little cost and are open to all eligible applicants regardless of their employment status - namely those in employment, jobseekers, those who were formerly self-employed and returners (formerly referred to as Homemakers).

DCU has a long history and successful track-record of supporting online and distance learning students and part-time learners and is pleased to offer online, distance and campus part-time places at postgraduate level with Springboard+. For more information and to see the list of courses available with Springboard+, visit: [dcu.ie/news/news/2020/06/dcu-announces-13-springboard-courses](https://www.dcu.ie/news/news/2020/06/dcu-announces-13-springboard-courses)

APPLYING TO DCU

Postgraduate Taught Programmes

Unless stated otherwise in the Programmes section of the guide, candidates seeking admission to all full-time and part-time postgraduate taught programmes must apply online through DCU's Student Application Portal which can be accessed [here](#).

Applicants can apply for up to three taught programmes or one research programme when making an application to DCU.

Programmes should be selected in order of preference. Applications to more than one programme are assessed independently, and depending on academic review, applicants may receive more than one offer. The cost of applying is €50 and is a non-refundable fee payable to DCU.

You can upload documentation relevant to your application through your account. Certified copies of the supporting documentation e.g. transcripts, must be submitted as soon as possible, or by the closing date, unless the programme page suggests otherwise.

On receipt of the application fee, your application will be available to view on the system. Applicants are notified by email as each step of the review route is progressed. It is therefore, imperative that applicants have a secure email account and review it regularly for updates, as no other means of communication between DCU and prospective applicants will be used.

Closing Dates for Applications

EU and Non-EU applications to full-time and part-time postgraduate taught programmes should note that each programme has an initial date indicating when applications should be submitted. Applications may be reviewed before or after the closing date. All DCU programmes have closing dates published on their website pages. Applications are assessed on a rolling basis, until all places are filled, so early application is advised. All required documentation should be submitted as soon as possible, or by the closing date, unless the programme webpage provides other guidance.

Please note that all Postgraduate programmes offered through DCU have entry requirements. In addition to qualifications some require additional information and applicants are asked to familiarise themselves with their programme(s) of choice before making an application. For details on the current closing dates applicable to postgraduate taught programmes please refer to the programme of interest on our website: dcu.ie/courses

Other Application Routes

Some postgraduate taught programmes require direct application to DCU. For further information on the application procedure for these programmes, visit: dcu.ie/courses

For further information or assistance with your application please contact our Student Enrolment Team in our Registry at:
T +353 (0) 1 700 5338
E registry@dcu.ie



Finance and Funding

Postgraduate Fees

Separate fees are set for each programme. Fees are payable for each academic year, or each stage of your programme. Students are liable to pay revised fees annually for the duration of the programme. For current fee information, visit: dcu.ie/fees

Fees for International Students

For information on international student fees (non-EU entrants), visit: dcu.ie/international/international-student-fee-payments-international-office

Grants and Scholarships

Postgraduate students can continue their Higher Education Grant or apply for one if they satisfy the means test and have not completed another postgraduate course. For more information on maintenance grants, visit: studentfinance.ie

Faculties also run individual scholarships for certain taught postgraduate programmes. For further information, visit: dcu.ie/graduatestudies/scholarships-opportunities

Research Councils

Research Councils are a major source of financial support for EU students wishing to register for postgraduate research degrees. However, funding for certain taught programmes is occasionally available. For more information, visit: research.ie

Sponsorship From Your Employer

If you are working and want to study part-time, some employers may help you with your course fees, or by offering flexible working.

Please note that the information contained in this prospectus is correct at time of print.

For updated information on all postgraduate programmes at DCU, visit: dcu.ie/courses

Masters Reduced Fee for DCU Alumni

DCU is delighted to extend the Alumni Benefit Scheme exclusive to all DCU graduates and outgoing final year students from the university. It applies to students commencing the first year of a full time or part time taught Masters Programme for the 2021/22 academic year. For more information visit: dcu.ie/reduced-masters-programme-fees



How to Get to DCU

DCU Glasnevin campus is just a short distance from Dublin city centre, Dublin Airport and both the M50 and M1 motorways. The campus is walking distance to both the DCU St Patrick's campus and DCU All Hallows campus which are located in Drumcondra.

All campuses are well serviced by public transport. Along with the regular public bus services there are three Semester only routes to and from DCU – 31d (Baldoye to DCU), 42d (Portmarnock / Malahide to DCU) and 70d (Dunboyne to DCU). There are also daily private bus services from Dundalk, Bettystown and Drogheda to DCU (Matthews Coaches) and Monaghan to DCU (Collins Coaches).

Please check regularly on our website for transport updates:
[dcu.ie/info/how-to-get-to-dcu-information](https://www.dcu.ie/info/how-to-get-to-dcu-information)



Dublin Bus Routes

See map for key to bus numbers

No. 1 DCU Helix (Stop #7571)

- 31d** DCU (Helix) to Baldoyle via Collins Avenue, Howth Road, Dublin Road, Strand Road [Bus departs Baldoyle at 7.45am (arriving DCU at 8.35am) and will depart DCU at 5.15pm] (term-time only)
- 44** DCU (Helix) to Enniskerry via city centre and Dundrum
- 42d** DCU (Helix) to Portmarnock via Collins Avenue, Ballymun Road, M50, M1, Holywell, Swords Road, Yellow Walls Road, Malahide Village, Blackwood Lane, Wendell Avenue, Strand Road [Bus departs Portmarnock at 7.30am (arriving DCU at 8.40am) and will depart DCU at 5.10pm] (term-time only)
- 70d** DCU (Helix) to Dunboyne via Ballymun Road, Griffith Ave Extension, Finglas Road, Ballyboggan Road, Rathoath Road, Nephin Road, Navan Road, Castleknock Road, Blanchardstown Village, Clonee [Bus departs Dunboyne at 7.15am (arriving DCU at 8.30am) and will depart DCU at 5.05pm] (term-time only)
- 104** DCU (Helix) to Clontarf via Beaumont Hospital, Donnycarney and Vernon Ave [DART link for Clontarf DART station]
- 220** DCU to Mulhuddart via Blanchardstown

No. 2 Ballymun Rd (Stop #37 on DCU side, towards city centre and stop #4680 opposite DCU away from city centre)

- 4** Harristown to Monkstown Ave via city centre
- 9** Charlestown to Limekiln Ave, Walkinstown via city centre
- 11** Wadelai Park to Sandyford Ind Est via city centre
- 13** Harristown to Grange Castle Business Park, Clondalkin via city centre
- 155** IKEA (Ballymun) to Bray Rail Station via city centre

No. 3 Collins Ave (stop #135021)

- 109A** Bus Éireann: From city centre (Busáras) to Kells

No. 4 Whitehall (Stop #1642)

- 1** Santry (Shanard Rd), Sandymount via city centre
- 33** Balbriggan to city centre via Swords Road (Collins Ave Ext)
- 41 (A, B, C)** Swords to city centre via Swords Road/Dublin Airport (41 only)

No. 5 Whitehall, Swords Road

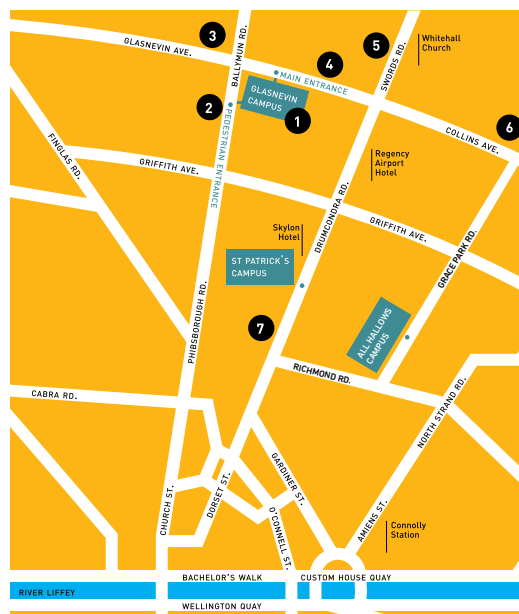
- 101** Bus Éireann: From city centre (Busáras) to Drogheda
- 909/900** Matthews Coaches: From city centre (Cumberland St Nth) to Dundalk

No. 6 Collins Ave Ext (Stop #215 (towards Dublin Airport) #237 towards city centre)

- 16** Dublin Airport to Ballinteer (Kingston)

No. 7 Drumcondra Rd Upper (stops #21/#7602 (away from city centre)/ stops #45/#7603 (towards city centre))

- 1** Santry (Shanard Road) to Sandymount via city centre
- 11** Wadelai Park to Sandyford Ind Est via city centre
- 13** Harristown to Grange Castle Business Park, Clondalkin via city centre
- 16** Dublin Airport to Ballinteer (Kingston)
- 33** Balbriggan to city centre via Swords Road (Collins Avenue Extension)
- 41 (A,B,C)** Swords to city centre via Swords Road/Dublin Airport (41 only)
- 44** DCU (Helix) to Enniskerry via city centre and Dundrum



DUBLIN BUS ROUTES (www.transportforireland.ie)

Servicing Glasnevin Campus

1, 4, 9, 11, 13, 16, 17a, 31d, 33, 41, 41a, 41b, 41c, 42d, 44, 70d, 104, 220, 155

Servicing St Patrick's and All Hallows Campuses:

1, 11, 13, 16, 33, 41, 41a, 41b, 41c, 44

NIGHT LINK

- 33N** Westmoreland St to Balbriggan (drop off at Drumcondra/Santry)
88N Westmoreland St to Ashbourne (drop off at Glasnevin Ave or Ballymun Civic Centre)
41N Westmoreland St to Swords Manor (drop off at Drumcondra/Whitehall, opposite Whitehall Church)

BUS ÉIREANN ROUTES

- 101** Drogheda, Balbriggan, Dublin via Swords Road (Collins Ave Ext)
109A Dublin Airport/city centre, Ashbourne, Ratoath, Dunshaughlin, Navan, Kells
126 Naas to DCU (Collins Ave)

MAINLINE/COMMUTER TRAINS

Drumcondra Train Station (approx 10/15 mins walk north along the Drumcondra Road to DCU St Patrick's and All Hallows Campuses and approx 25/30 mins walk to the Glasnevin Campus)

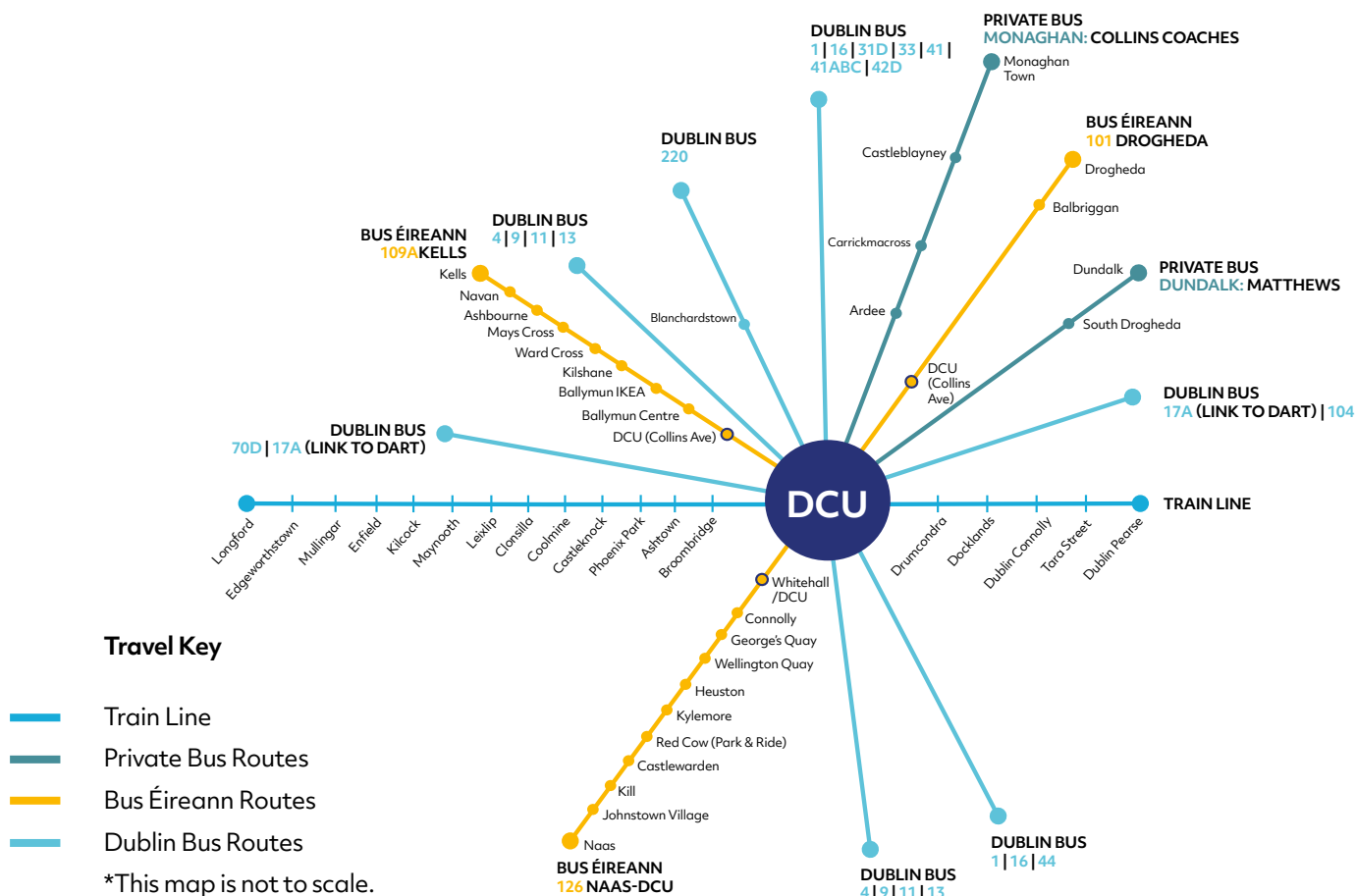
Direct connections to Drumcondra from both Dublin Connolly and Dublin Heuston train stations

Commuter Direct Routes via Drumcondra

Between Maynooth/Leixlip and Dublin Pearse Station

Between Newbridge/Naas/Sallins and Dublin Grand Canal Dock Station

For further information and timetables use the Irish Rail Journey Planner: www.irishrail.ie



Private Bus Routes - (Please check service providers' website for exact details as times may change from semester to semester)

Matthews Coaches: www.matthews.ie

- Route 1:** Dundalk/Drogheda – DCU Glasnevin campus (direct) (term-time only).
 Departs Dundalk 7.15am, Drogheda 7.45am, arrives DCU Glasnevin campus 8.00am. Departs DCU Glasnevin Campus at 5.15pm
- Route 2:** Bettystown, Laytown, Dublin (Swords Road)
- Route 3:** Dundalk, Drogheda, Dublin (Swords Road)

Collins Coaches: www.collinscoaches.ie

Monaghan Town to DCU Glasnevin campus via Castleblayney, Carrickmacross, Ardee. Departs Monaghan 6.30am, arrives DCU Glasnevin campus 8.30am. Departs DCU Glasnevin campus daily at 5.15pm

Information about buses/trains is correct at time of going to print.

For admissions enquiries:
registry@dcu.ie
+353 (0) 1 700 5338
dcu.ie

For general enquiries:
studenthelp@dcu.ie

 /dcu

 /DublinCityUni



Purposefully different,
consistently excellent