



Ollscoil Chathair
Bhaile Átha Cliath
Dublin City University



**#1 IN IRELAND
#23 IN THE WORLD
FOR GRADUATE
EMPLOYMENT RATE***

*QS Graduate Employability Rankings 2022

97% of graduates in
employment/
further study

(Graduate Outcomes Survey 2019)



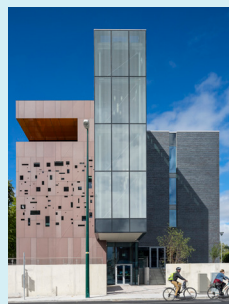
DCU is young,
gifted and on
track. DCU gives
students vital
experience and
skills to augment
their academic

studies and is
instrumental in
producing an
excellent calibre of
graduate, primed
and ready to face
the future.

University of the Year 2021
Sunday Times

DCU is ranked in the top 600*
universities worldwide as QS
Top 61-70 under 50

*The World University Rankings 2021



**18% OF STUDENTS
ARE INTERNATIONAL
AND FROM 122
DIFFERENT
NATIONALITIES**

**20% OF STUDENTS
ARE FROM NON-
TRADITIONAL
BACKGROUNDS**



80% of DCU courses include
INTRA paid, relevant work
experience or a work placement

140+
student clubs
and societies



#1 IN IRELAND AND #19 IN THE WORLD FOR GRADUATE EMPLOYMENT RATE*



*QS Graduate Employability rankings 2020

At DCU we're committed to developing the whole person and preparing you for a life rich with purpose. After all, your purpose in life is likely to change a number of times over the course of your life. This means not only learning your subject, but learning all the other skills you need for the workplace and life as a whole. We are here to help you build your employment potential.

DCU provides industry-relevant and professionally oriented degree courses to help you find meaningful employment after you complete your degree. Most graduates find it's the skills and competencies, rather than purely discipline-specific knowledge, which differentiates them from other candidates.

At DCU we prioritise the development of your skills and competencies. We offer formal work placements on many of our courses, which allow you to experience the workplace as a fully-fledged part of the team.

Each student has access to a range of workshops, programmes, one-to-one consultations through our student support and development team. You may choose to participate in group workshops or hone your skills as a leader through our Leadership and Engagement Module, progressing to becoming a member of one of the student committees over time.

We also offer informal learning opportunities to develop skills such as adaptability, communication skills and problem-solving skills, which will set you apart in the workplace of tomorrow.

INTRA (INtegrated TRaining) Programme

At DCU, we are committed to providing courses that are relevant as possible to today's industrial and commercial world. We also think it is important that you get to experience this world for yourself in conjunction with your academic training before you leave DCU. Only then can you fully appreciate what to expect when you graduate.

INTRA gives you an opportunity to gain degree-relevant work experience with companies in Ireland and overseas. Over the period of your placement, you will put your academic knowledge to the test in a real working environment that is relevant to your future ambitions.



What will you gain from your INTRA experience?

The key purpose of your placement is for you to apply your knowledge to real-life working situations, so that you gain practical skills. And there are other benefits:

- You will build up your confidence and develop relationship skills
- By applying your knowledge in a working environment, you will be able to make realistic and informed career decisions. You might even find that a specialism you hadn't considered is now your preferred direction
- You will generate some very valuable employment contacts. In fact, many DCU graduates gain employment with their INTRA employer
- As you begin to see the relationship between your job and your course curriculum, your interest in academic work as well as your motivation will invariably increase too
- In the majority of cases, you are paid for the work you do

There is no guarantee that every student will secure an INTRA placement. If a suitable placement cannot be found following an interview, students will be given a course-related project by their academic department. If you have an INTRA placement/project, you will be assessed and awarded either a "pass" or a "fail".

For more information, please visit dcu.ie/intra