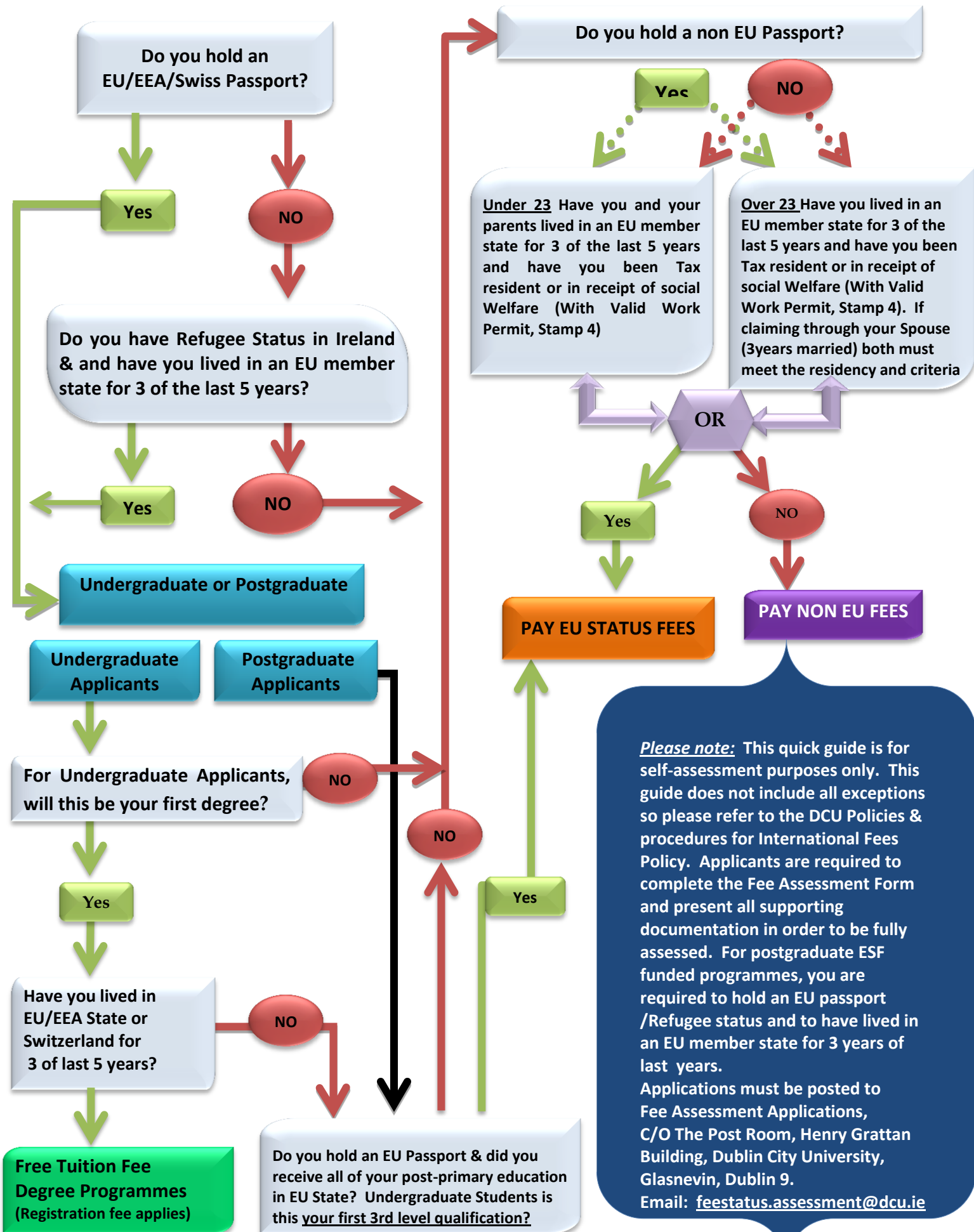


Fee Status Assessment Quick Guide

For 1st Year Undergraduate & Post Graduate Students.



Please note: This quick guide is for self-assessment purposes only. This guide does not include all exceptions so please refer to the DCU Policies & procedures for International Fees Policy. Applicants are required to complete the Fee Assessment Form and present all supporting documentation in order to be fully assessed. For postgraduate ESF funded programmes, you are required to hold an EU passport /Refugee status and to have lived in an EU member state for 3 years of last years. Applications must be posted to Fee Assessment Applications, C/O The Post Room, Henry Grattan Building, Dublin City University, Glasnevin, Dublin 9. Email: feestatus.assessment@dcu.ie