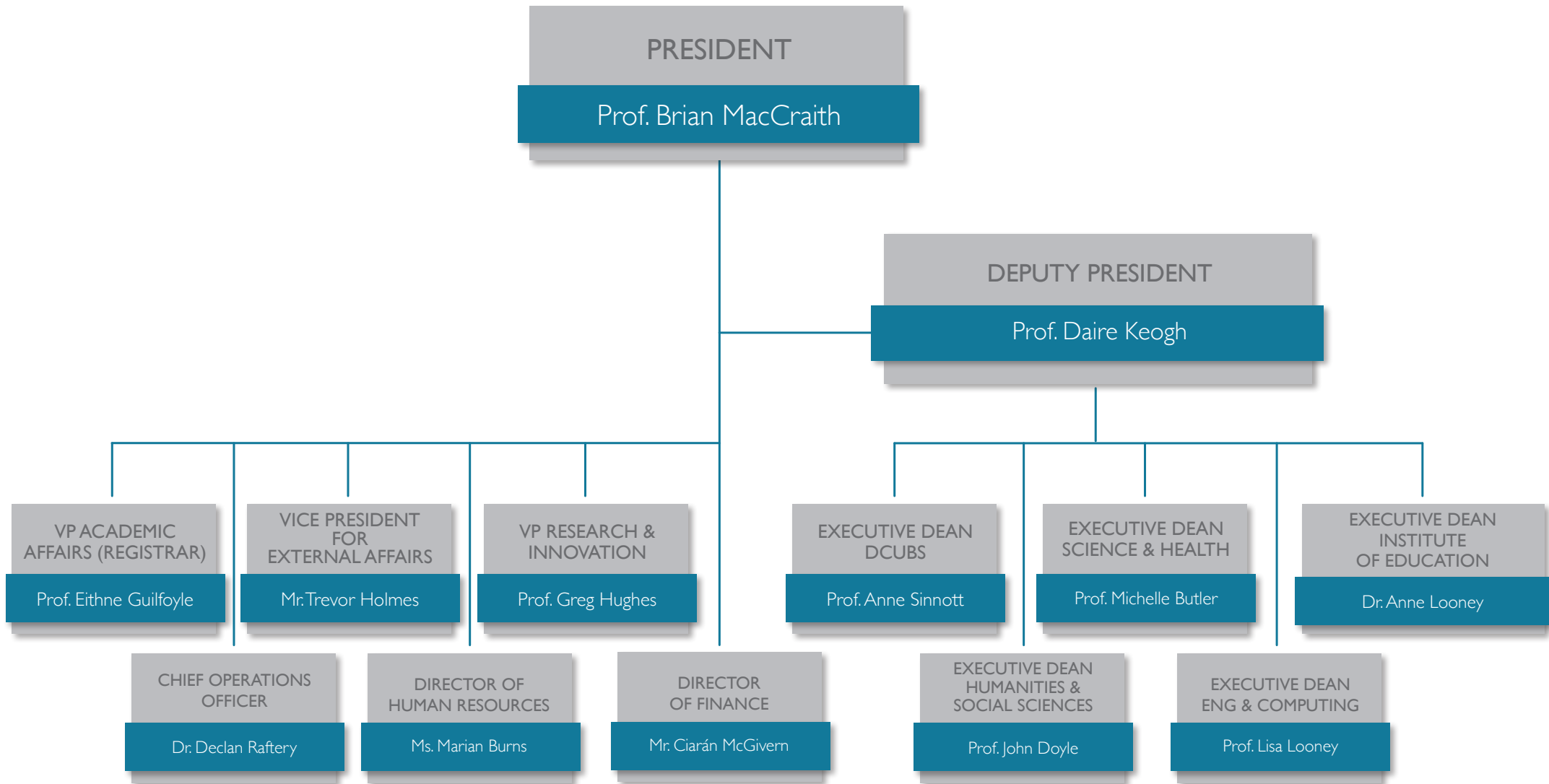
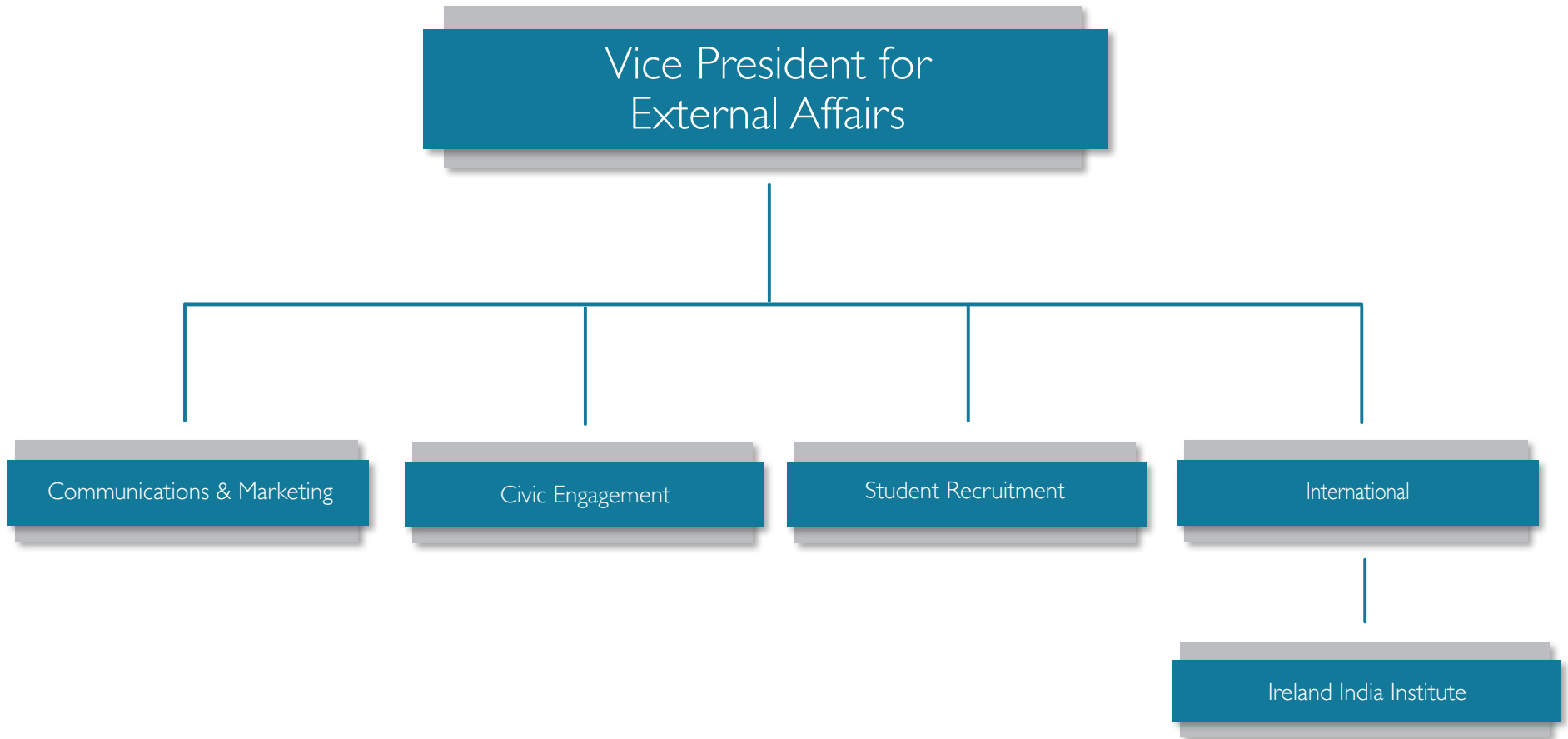


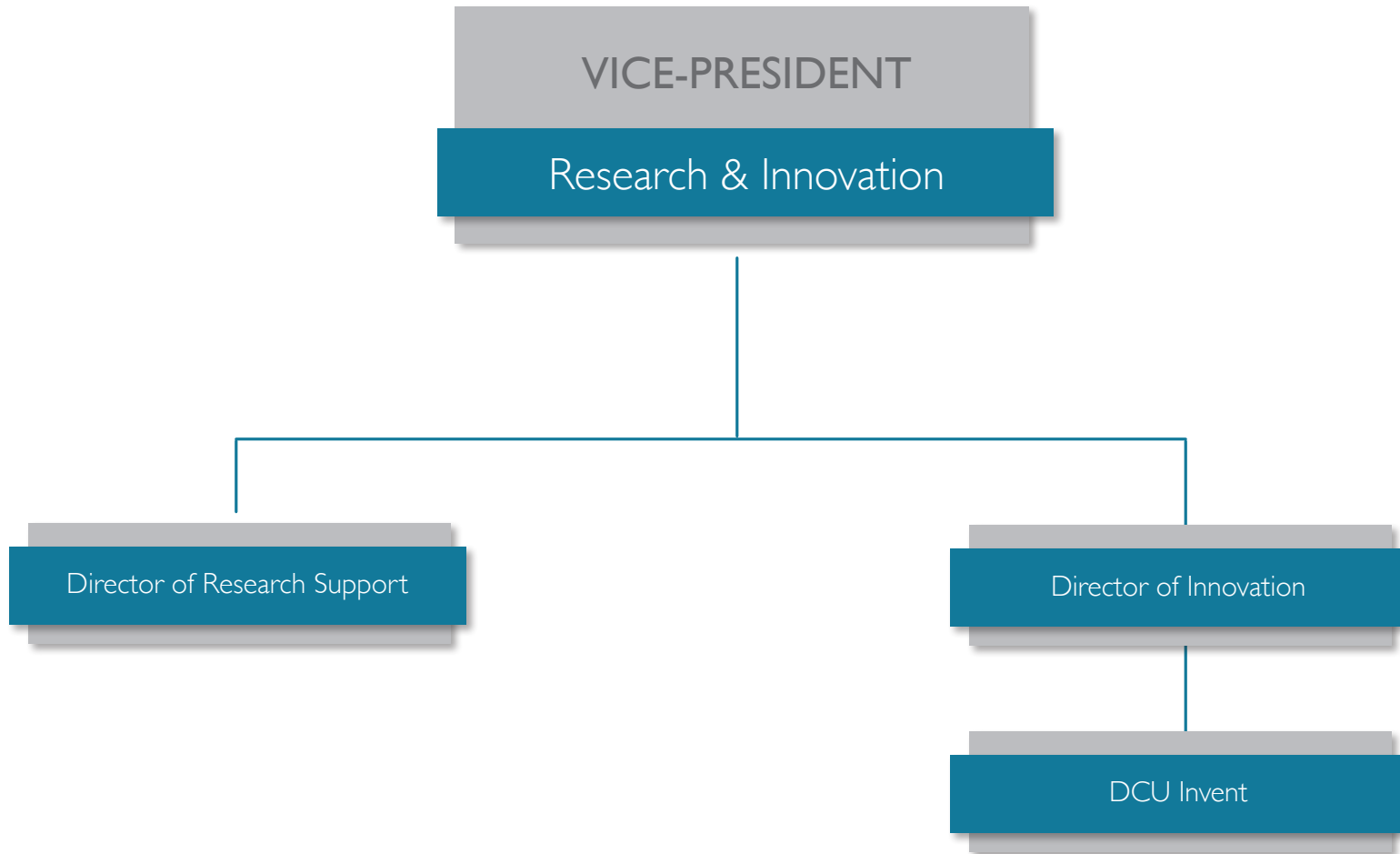
Dublin City University
Senior Management





*Reports to Audit Committee

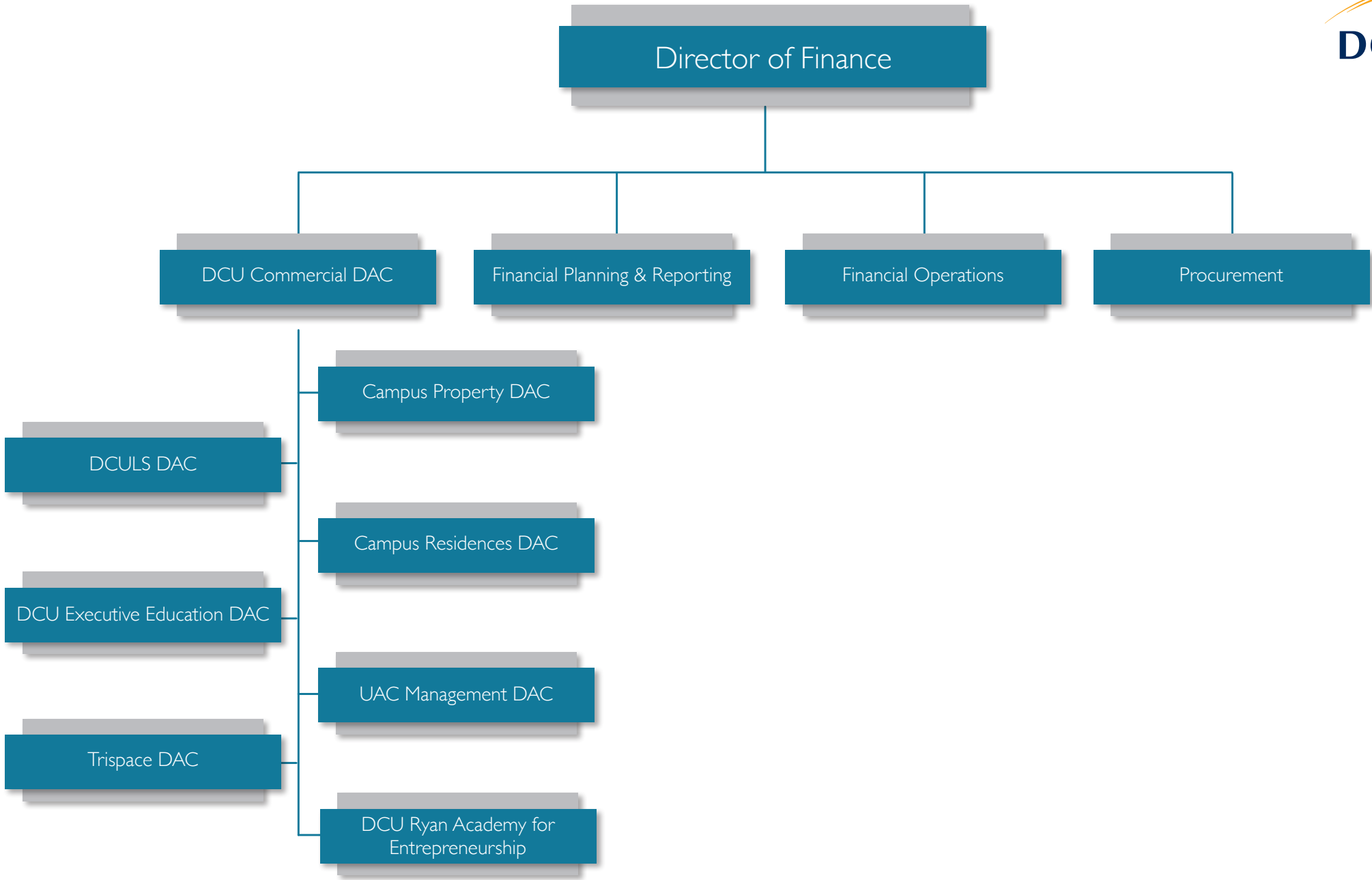




Director of Human Resources

A vertical organizational chart with two levels. The top level is a dark teal box with the text "Director of Human Resources". A thin teal line connects the bottom center of this box to the top center of a second, smaller dark teal box below it, which contains the text "Director of Equality". Both boxes have a light grey drop shadow behind them.

Director of Equality



VP Academic Affairs (Registrar)

Dean of Graduate Studies

Assistant Registrar

Dean, Teaching & Learning/
Deputy Registrar

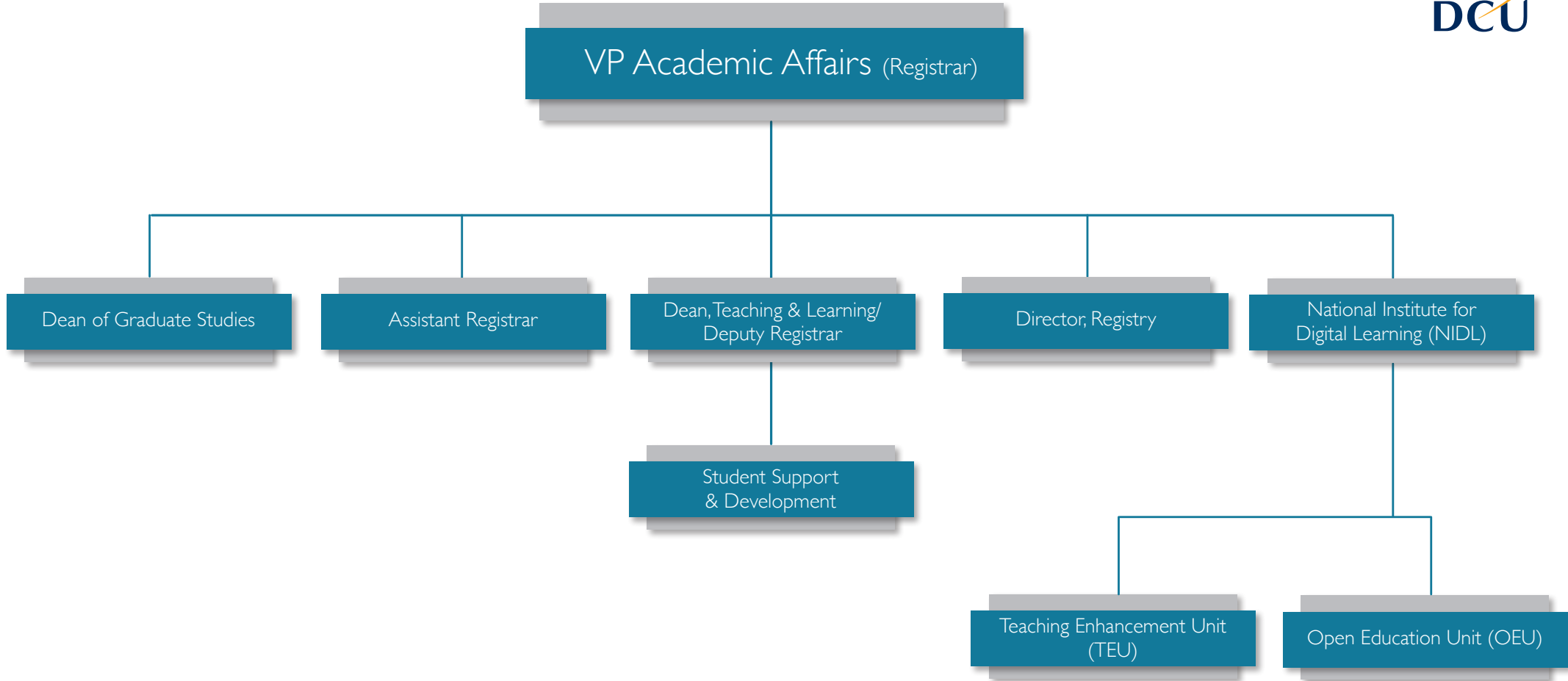
Director, Registry

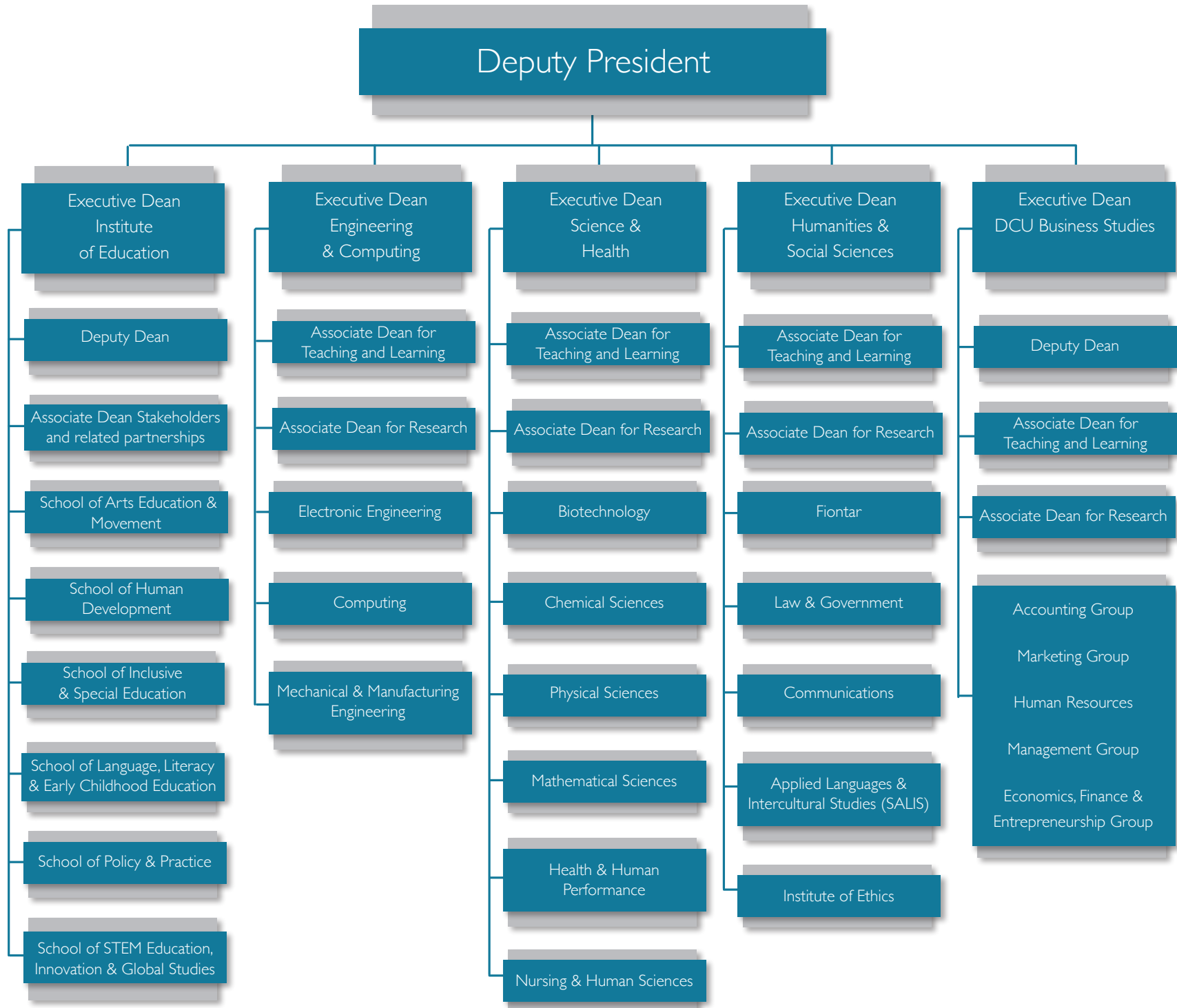
National Institute for
Digital Learning (NIDL)

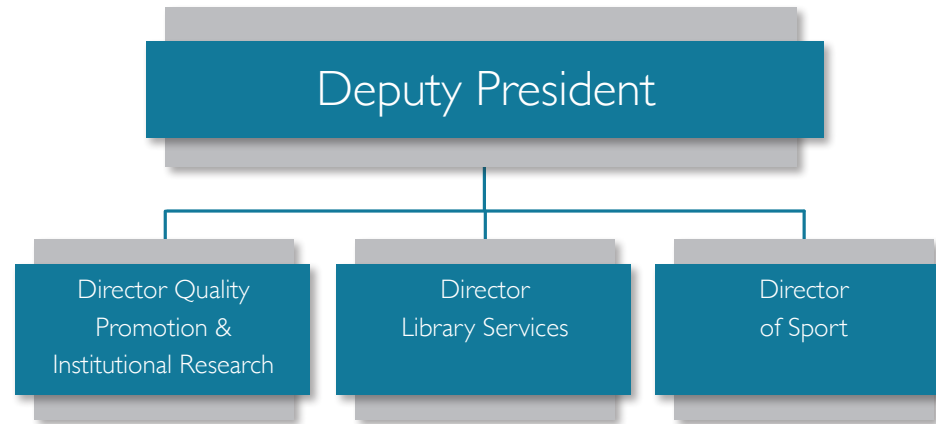
Student Support
& Development

Teaching Enhancement Unit
(TEU)

Open Education Unit (OEU)







Deputy President

