



# **Dublin City University**

**Application for Green Campus Flag Renewal  
June 2015**

## Contents

1. Green Campus Continuity .....	3
Activities in 2014/2015 .....	3
Looking forward to 2015/2016 .....	4
2. Progress Report 2014/2015 .....	4
Energy .....	4
Water .....	6
Waste .....	7
Biodiversity .....	10
Transport.....	11
3. Issues and Resolutions .....	14
4. Action Plan for 2015/2016.....	15
5. Monitoring and Evaluation .....	15
Energy .....	15
Water .....	17
Greenday 2: Water Theme: November 21, 2014.....	17
World Water Day, 22 March 2015 .....	19
Waste .....	20
Paper waste SU elections.....	20
Water Bottles/Coffee Cups/Behavioural Change .....	21
Litter surveys.....	22
Pack it up Pass it on.....	23
Adopt A Street: 2014/2015 .....	23
Biodiversity .....	23
DCU Community Garden.....	23
Biodiversity survey .....	24
Sustainable Community Garden .....	24
National Tree Week 2015 .....	26
Transport.....	26
6. Community Engagement .....	27
7. DCU Green Charter .....	28
8. Appendices.....	29

1. How has the continuity of the Green-Campus been ensured when past committee members have left the Campus?

## 1. Green Campus Continuity

The original DCU green committee was established in 2012/2013, this followed a period of increased activity and focus within the University on the importance of sustainability and what role could be played by the University students and staff. With the formation of the green committee and the appointment of the DCU Sustainability Manager this interest and focus has continued to grow as can be seen from Figure 1 below. In addition these are a growing number of alumni that continue to engage with the DCU green committee particularly through the DCU Community Garden.

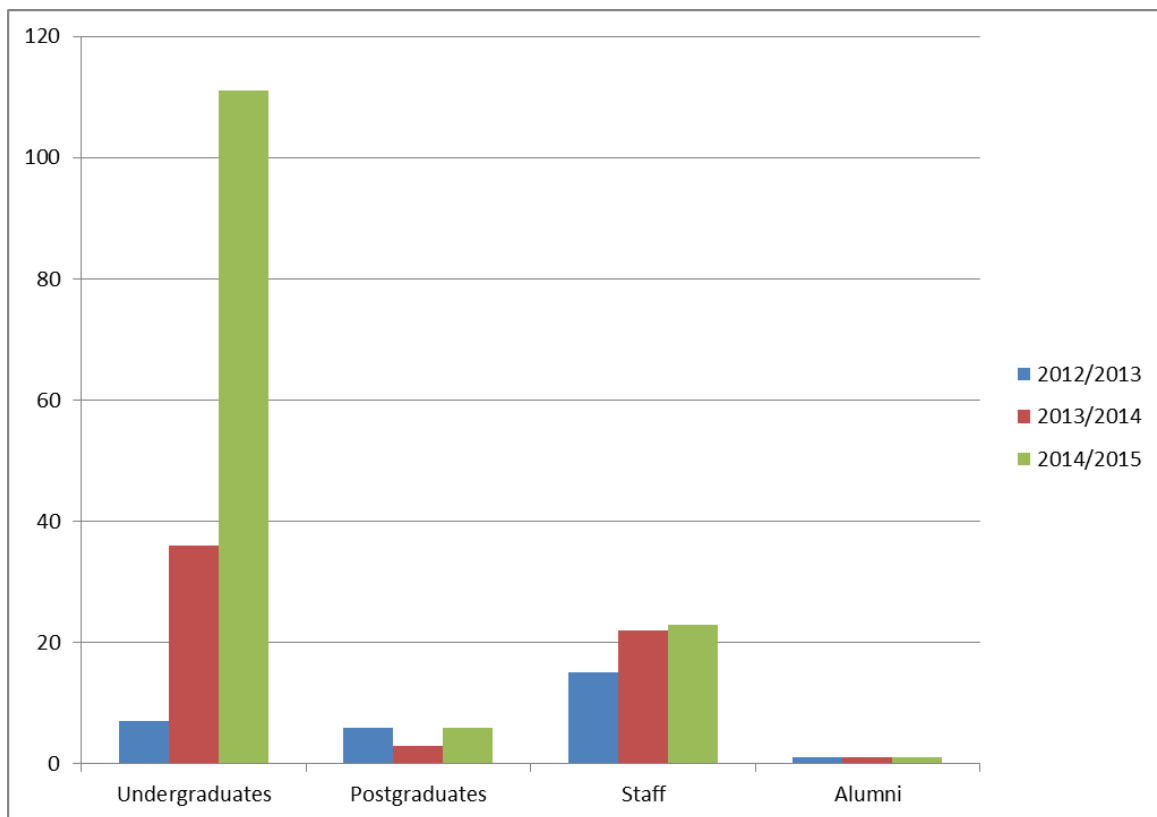


Figure 1: DCU Green Committee Membership

## Activities in 2014/2015

In 2014 measures that were put in place to support the continuity of the Green-Campus Programme is maintained included:

1. The Student Union Sustainability Officer was elected (Jochelle Laguipo) and she co-chaired the Green Committee along with support from Mariane Galop, student and Samantha Fahy, Sustainability manager.
2. Members of the Grow Your Own Society and the Environmental Society were strongly encourage and did join the Green Committee.

3. Samantha Fahy, Sustainability Manager included in a presentation to all new staff and students information on the DCU Green Campus initiative during their induction sessions.
4. The Green committee continued to roll forward Action Plans from previous year adding the progress and or comments on past projects. This provides continuity on projects that have not reached completion or that run on an annual basis. All documents are stored on Google Drives and shared across Green Committee leaders and members.
5. Members of the green committee sought to have a full time SU Sabbatical Officer dedicated to Sustainability in the 2015/2016 SU. The Class Representative Council was petitioned (see Appendix 1) however insufficient signatures were gathered to get the motion passed. A more concerted campaign is being considered for future elections.
6. The DCU SU amended its constitution to include sustainability which will have a knock on effect of promoting the CG to students (DCU SU constitution: See 2.1.6 To promote an ethos of environmental sustainability within its operations.)
7. Further work needs to be undertaken to link the Green Committee activities with the strategic operations of the campus.

## Looking forward to 2015/2016

Several of the initiatives that were successful in 2014/2015 will again be rolled out in 2015/2016. In addition the Grow Your Own and Environmental Society will seek to merge to create the DCU Green Environmental Society. It is hoped this society will provide a platform for all the DCU students to raise their environmental concerns and suggestion. This society will then nominate representatives to the DCU Green Committee. We hope that this structure will help support the large number of undergraduates that are interested in environmental issues, as demonstrated by the increasing numbers joining the Green Committee over the past three years. It will hopefully also allow the Green Committee to be more efficient in the progressing of actions as large meeting in the past have tended to be talk shops rather than actions focused.

## 2. Progress Report 2014/2015

There has been significant progress over the past academic year. In this section we report the overarching progress on environmental performance across Energy, Water, Waste, Biodiversity and Transport.

### Energy

DCU continues to work toward its agreed target of 33% energy reduction by 2020 on 2010 figures. As can be seen from figure 2 below progress towards this target is being achieved year on year. Preliminary data from 2014 indicated that DCU improved our performance from 29.4% in 2013 to 30.7% in 2014 toward our 2020 target. The reduction in carbon emission from 2012 – 2013 was 585 tonnes and from 2013 – 2014 398 tonnes giving a total reduction from registration 2012 to the end

of 2014 of 983 tonnes of CO2. The Estates Office in DCU provide the bulk of the support toward gaining these savings.

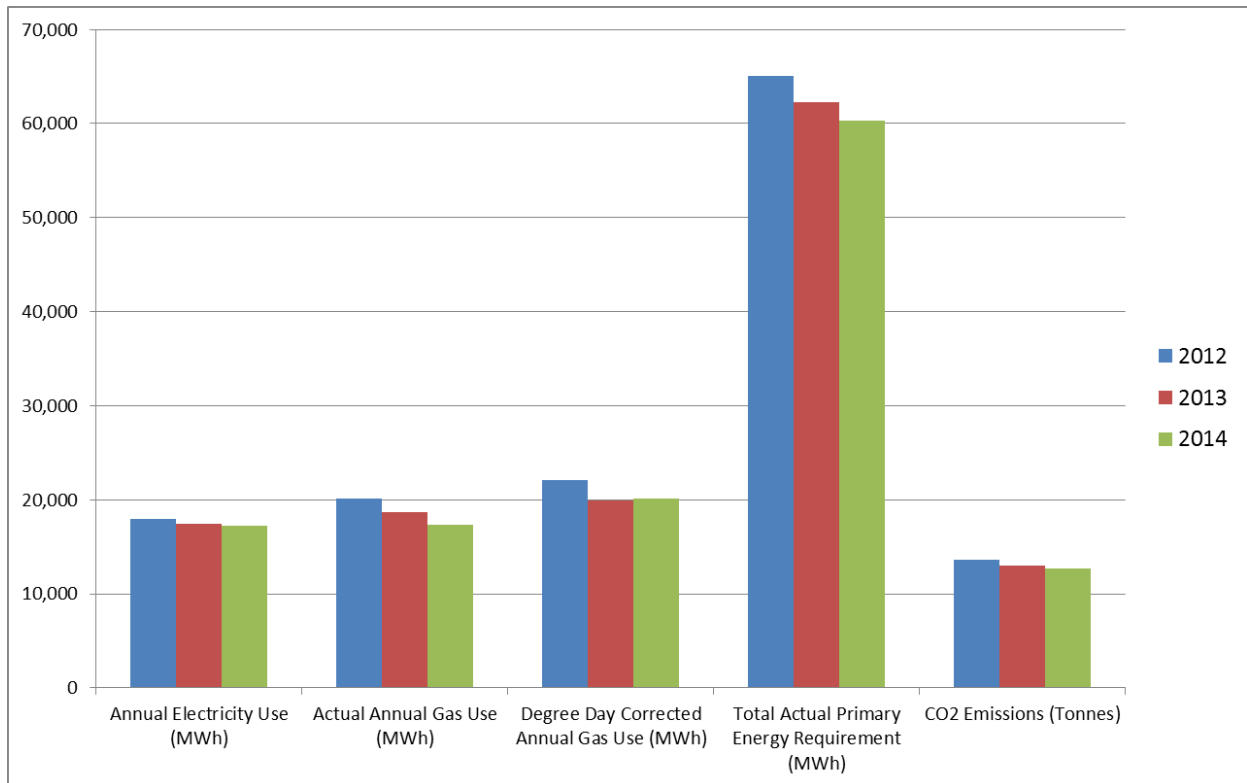


Figure 2: DCU Energy Consumption 2012 -2014 (calendar yrs)

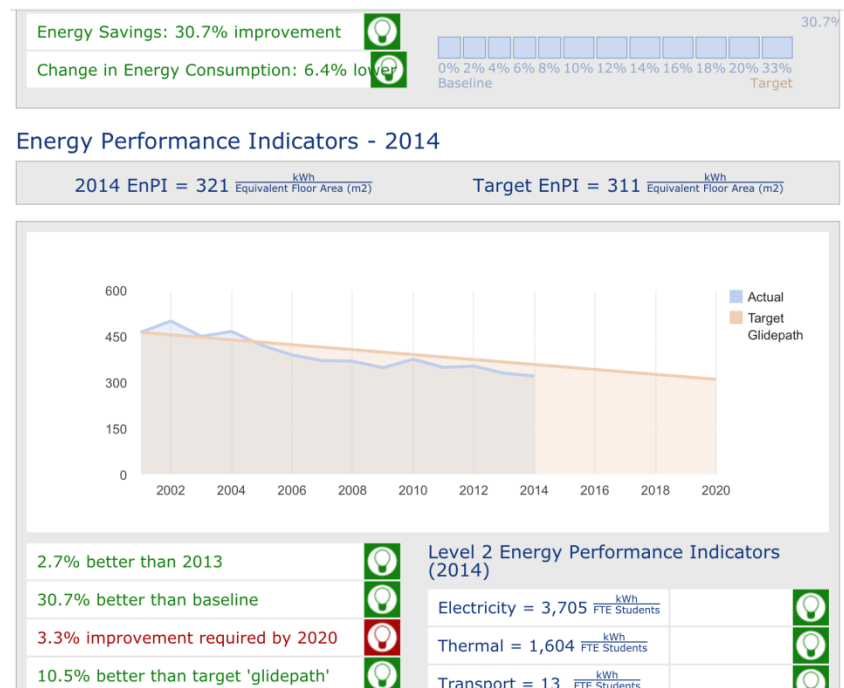


Figure 3: DCU Energy Performance toward 2020 target

An estimate of total energy reduction for electricity and gas consumption from 2012 to 2013 was 1,968 MWh and 2013- 2014 1,604 MWh (based on actual gas and electricity consumption). These savings estimate to a total financial saving of approx. €289k over the two year period.

## Water

In 2014/2015 an analysis of the total water consumption of the campus was calculated for the previous two year to establish a base line figure (figure 3 below). This total volume was compared with some partner universities across Europe and while it is understood that there are significant regional differences in relation to water usage the results of this comparison appear to indicate that DCU consumes significantly more water per capita. It should be noted that this is preliminary data and it need to be double checked.

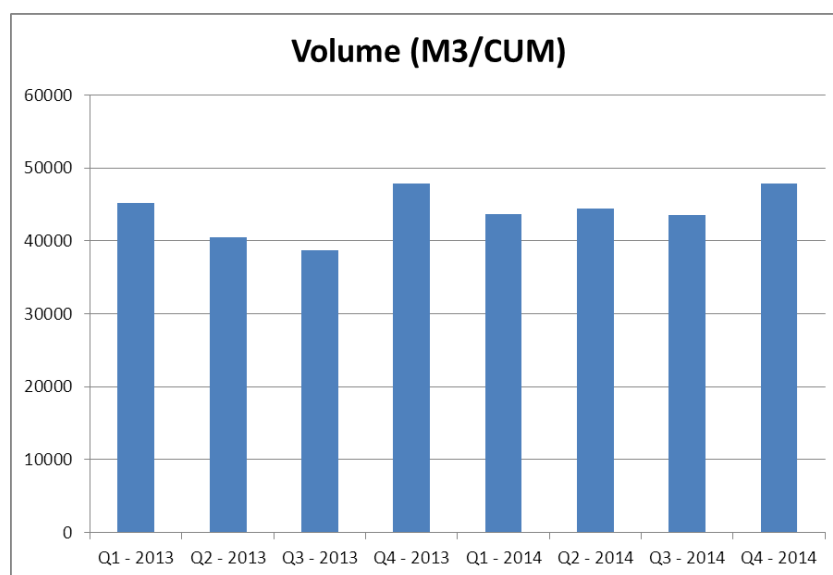
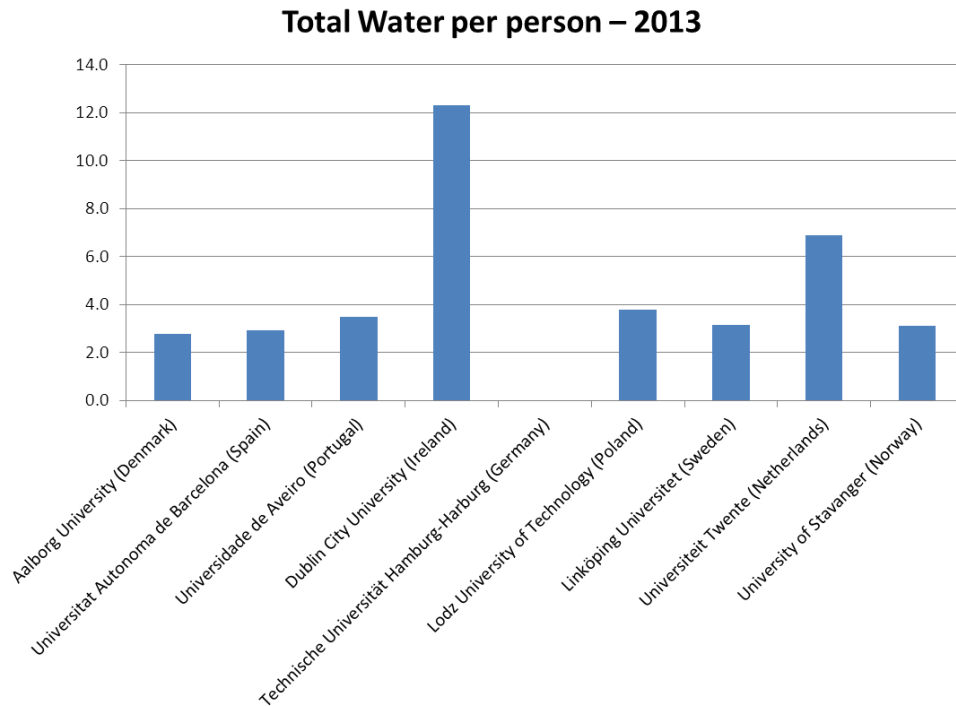


Figure 4: Total Water Consumption in DCU 2013 & 2014



**Figure 5: Water consumption comparative data (NOTE Preliminary results data need to be checked)**

## Waste

In 2014 the DCU Green Committee investigated where the waste was coming from within DCU. Data on all bins collected was analysed and is displayed in Figure 8 on the next page.

Some notable observations are that in 2013 there was a discernible reduction in waste production during Q2 and Q3 (i.e. when the main undergraduate body of students are not on site). However in 2014 there was no reductions. This was confirmed in discussion with key service providers (Catering, Spar, Helix..) and it is understood to be due to the increased usage of the campus out of term for conferences, language schools etc.

An analysis of where the waste was generation is shown in the pie chart below.

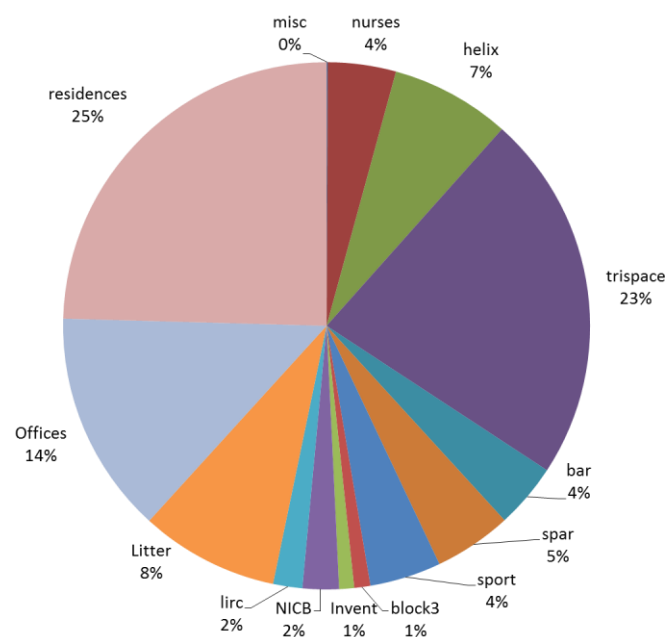


Figure 6: Breakdown of waste generators at DCU

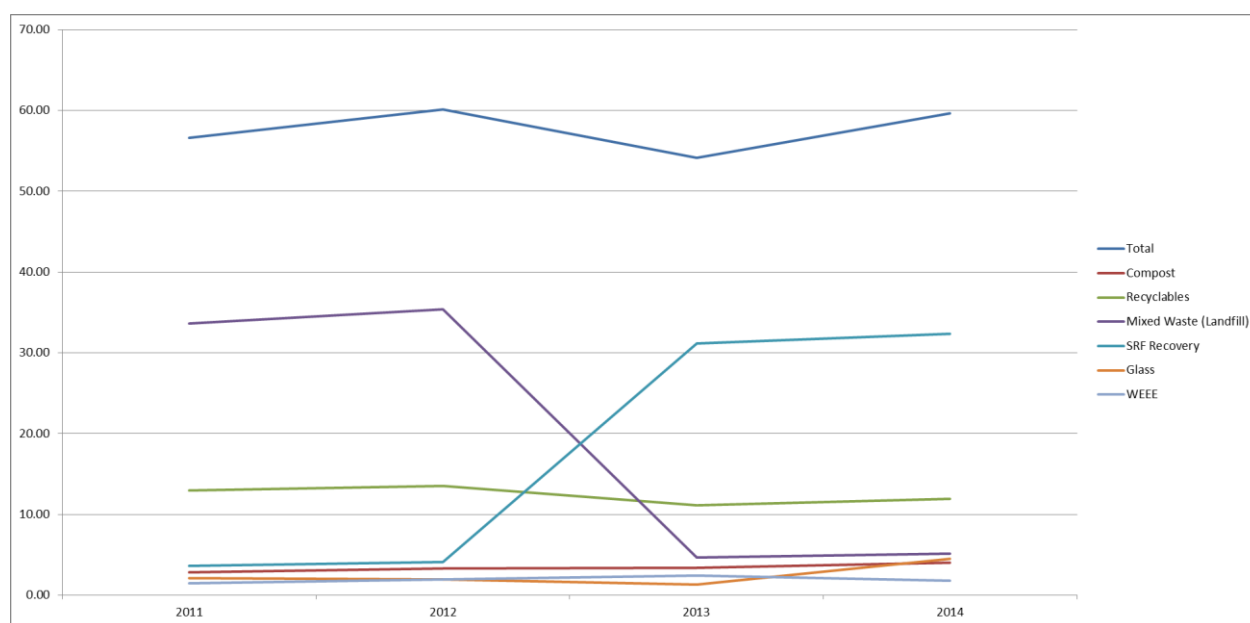


Figure 7: Waste (in Kg) per student at DCU

An analysis of the waste per student was also undertaken as shown in Figure 7. As can be seen from the graph the total waste per student has increased from 2013 to 2014. Some analysis of this data needs to be undertaken to ascertain whether this is due to better data collections or other factors. It should be noted that there has been an increase in levels of recycling and in particular glass recycling.



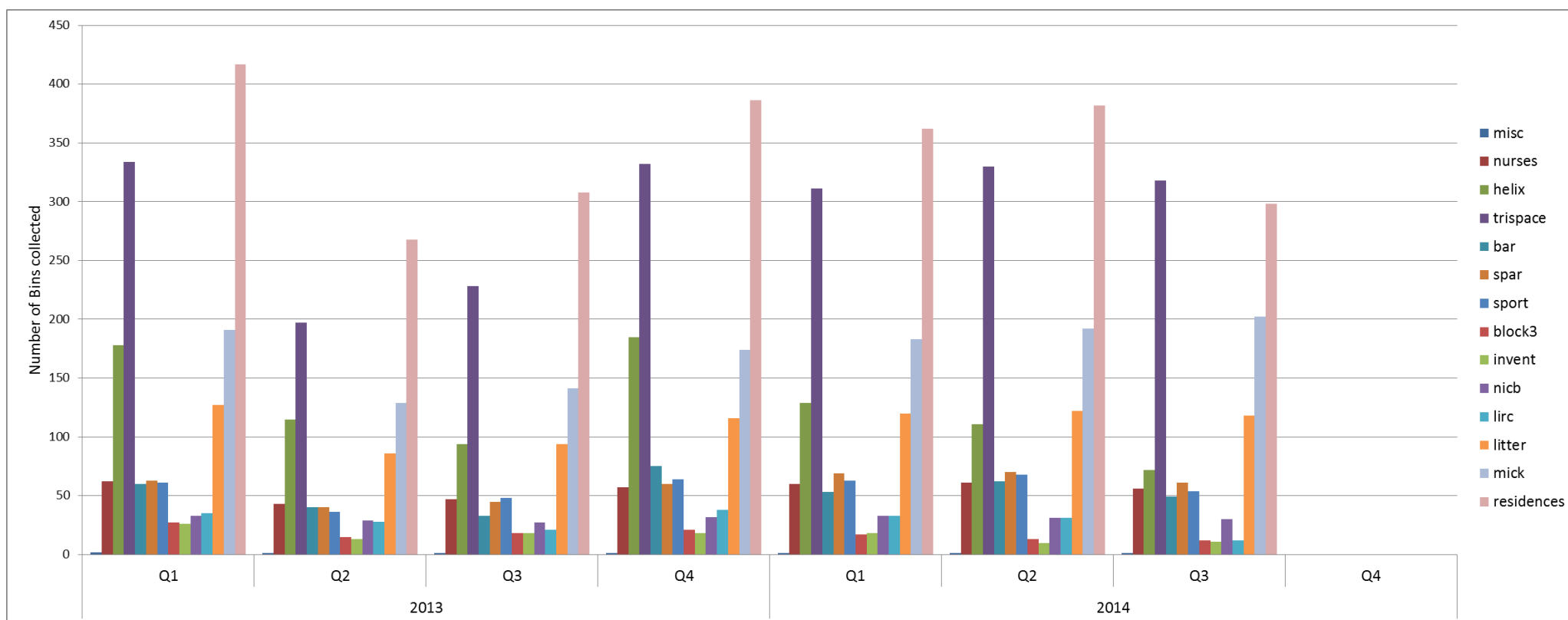


Figure 8: Breakdown of waste across the DCU Campus

## Biodiversity

A survey of the DCU campus was undertaken and there were eight primary areas identified (table below) as high biodiversity. Plant species were catalogued and a google map was developed to highlight key species. This map can be found at

<https://www4.dcu.ie/ocoo/sustainability/events.shtml> or directly at

<https://www.google.com/maps/d/edit?mid=zxl8dNJMd5O4.kKHj4zuKxHgg>

Area	Description
<b>Albert College</b>	The beds outside the Albert College building contain some interesting species such as Magnolia, while the lawn contain two distinctive Birch trees, and some species of fungi which can be found among the grass.
<b>Lime Avenue</b>	The entrance to DCU from Ballymun road is lined on each side by distinctive Lime trees, some home to native lichens.
<b>Memorial Garden</b>	A garden located beside Albert College dedicated to deceased members of the university community. A memorial plaque mounted to a stone, surrounded by flower beds, trees, and shrubs such as Holly.
<b>Campus Residences</b>	The Campus Residences, Hamstead, Larkfield and College Park. Each courtyard contains planted beds and numerous trees.
<b>The Mall</b>	DCU's central Mall stretches from the Henry Grattan building to the library, lined with trees such as the Silver Birch and hedgerows. Many species of birds can often be seen here.
<b>Path to Community Garden</b>	Running from the back of DCU Library, behind St. Aidan's Secondary School, species along the path grow a bit wilder than other parts of the campus. Species of wildflowers and insects can be spotted along the way to the garden.
<b>Community Garden</b>	DCU's Community Garden, maintained by volunteers, can be utilised by staff, students and the community for a wide range of purposes - teaching, research, education, training and community engagement.
<b>DCU Library</b>	The grassy area beside DCU Library contains many native Irish trees including the Silver Birch, Wild and Bird Cherries, and the Wych Elm.

Figure 9: Table of high biodiversity areas at DCU

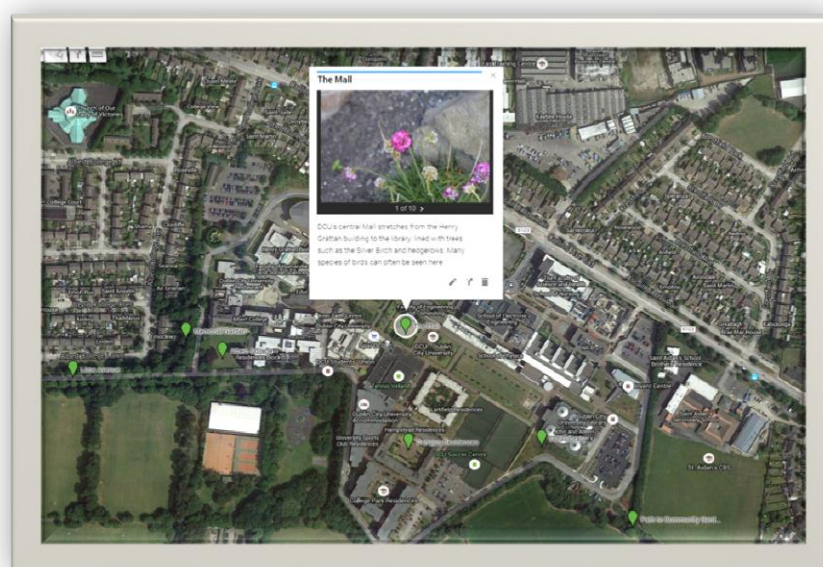
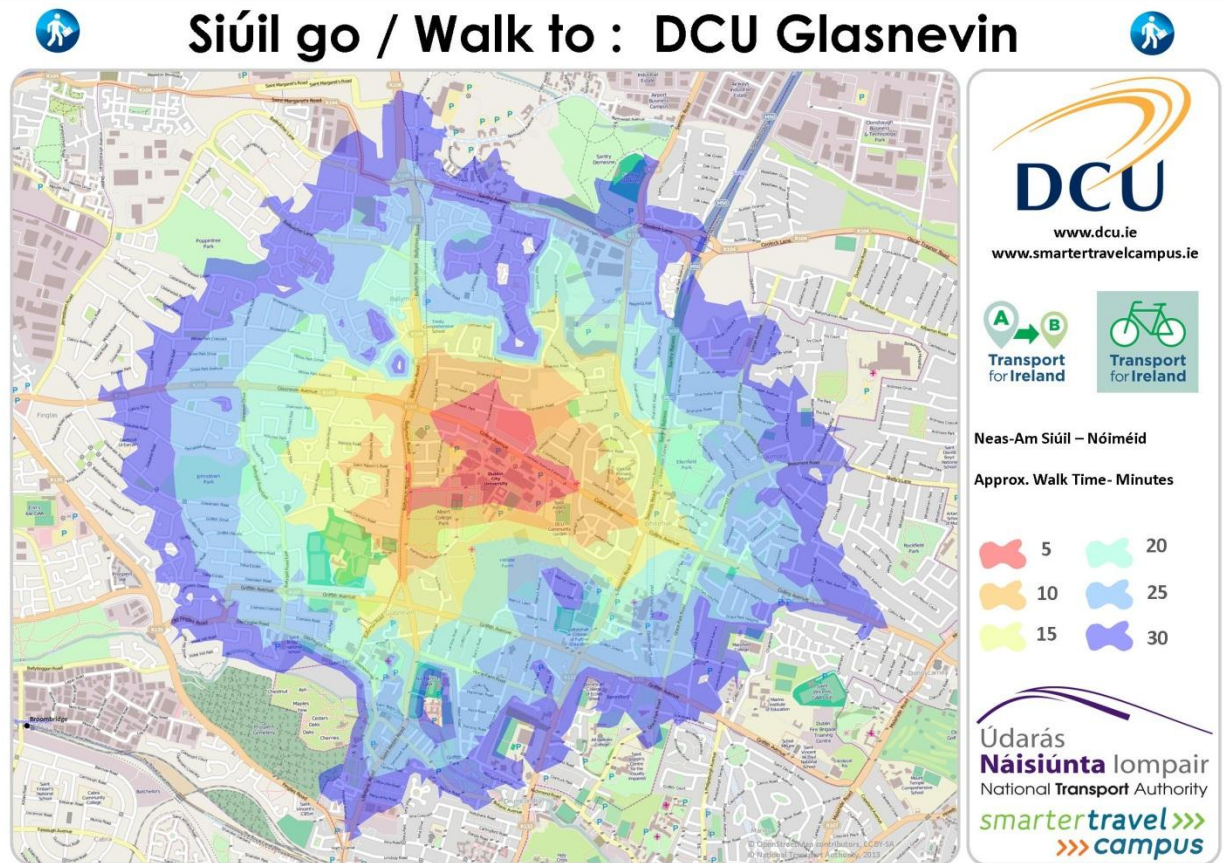


Figure 10: Google map of DCU campus identifying plant species in high biodiversity areas

## Transport

DCU is now a multi campus university. All students are encouraged where possible to use an active form of transport to travel to DCU. You can find out approx. how long it is to walk or cycle to DCU (Glasnevin or SPD) by looking at our accessibility maps



Walking times to DCU  
Glasnevin



Cycling times to DCU  
Glasnevin Campus

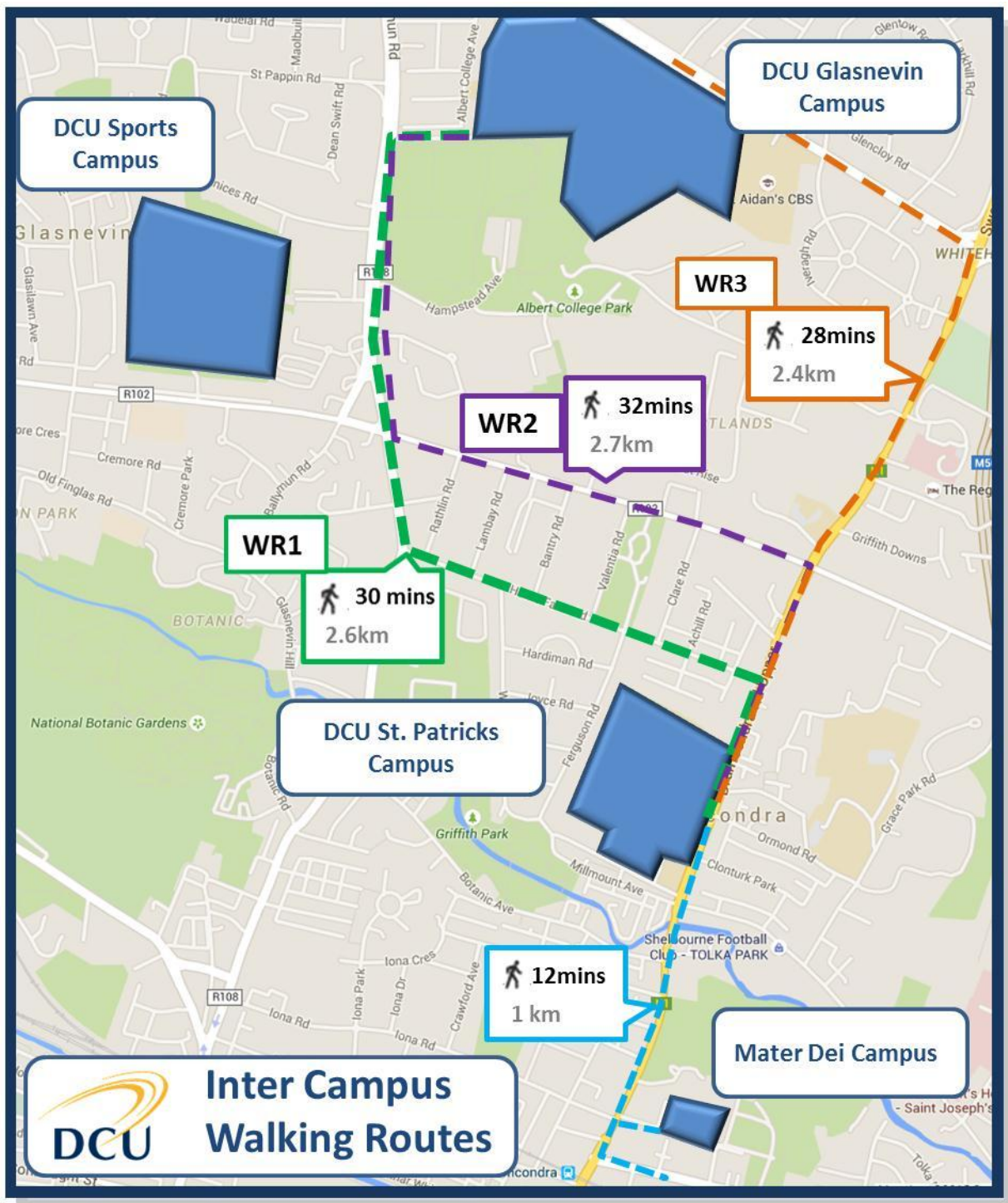


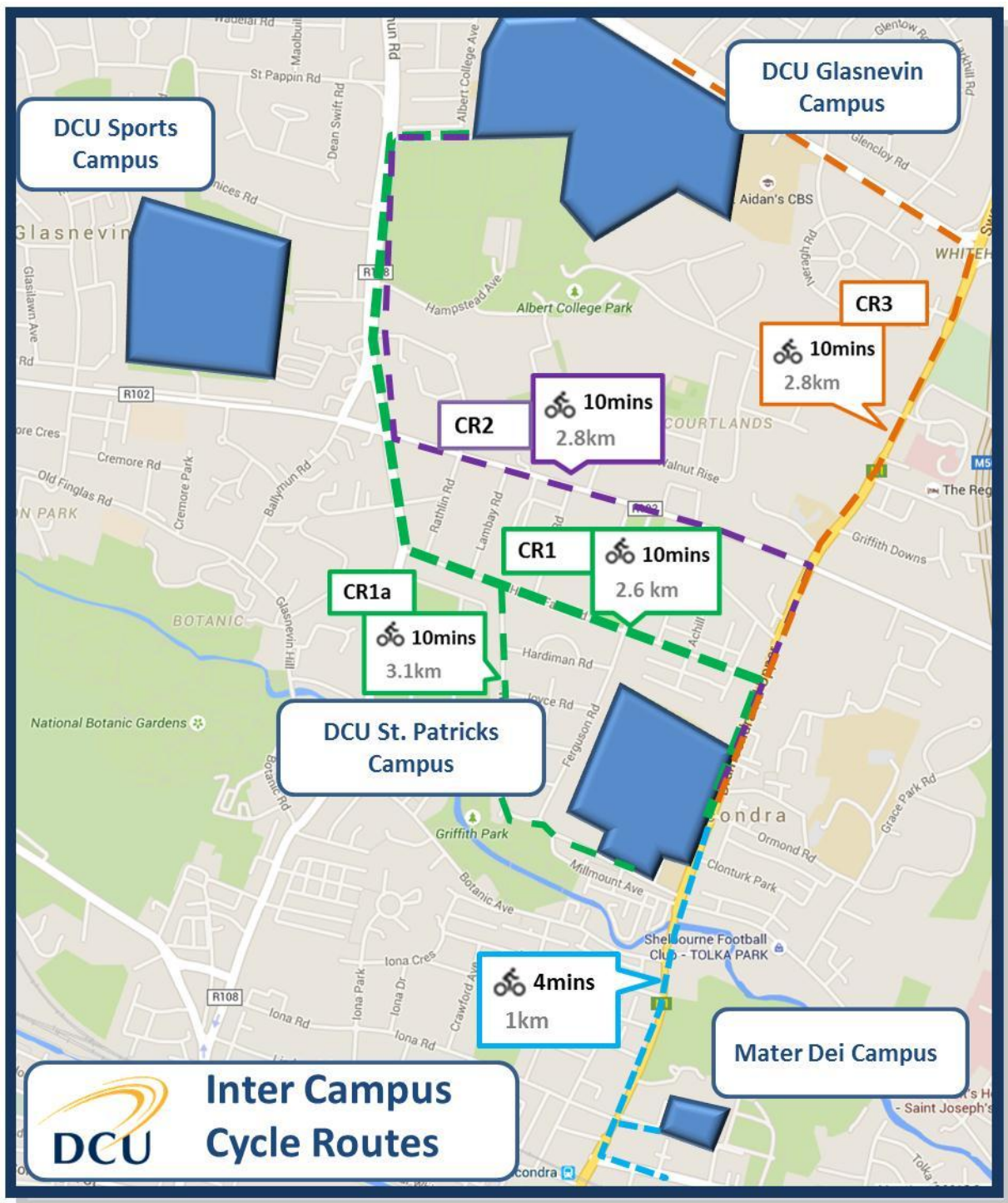
Walking times to DCU  
St. Patrick's Campus



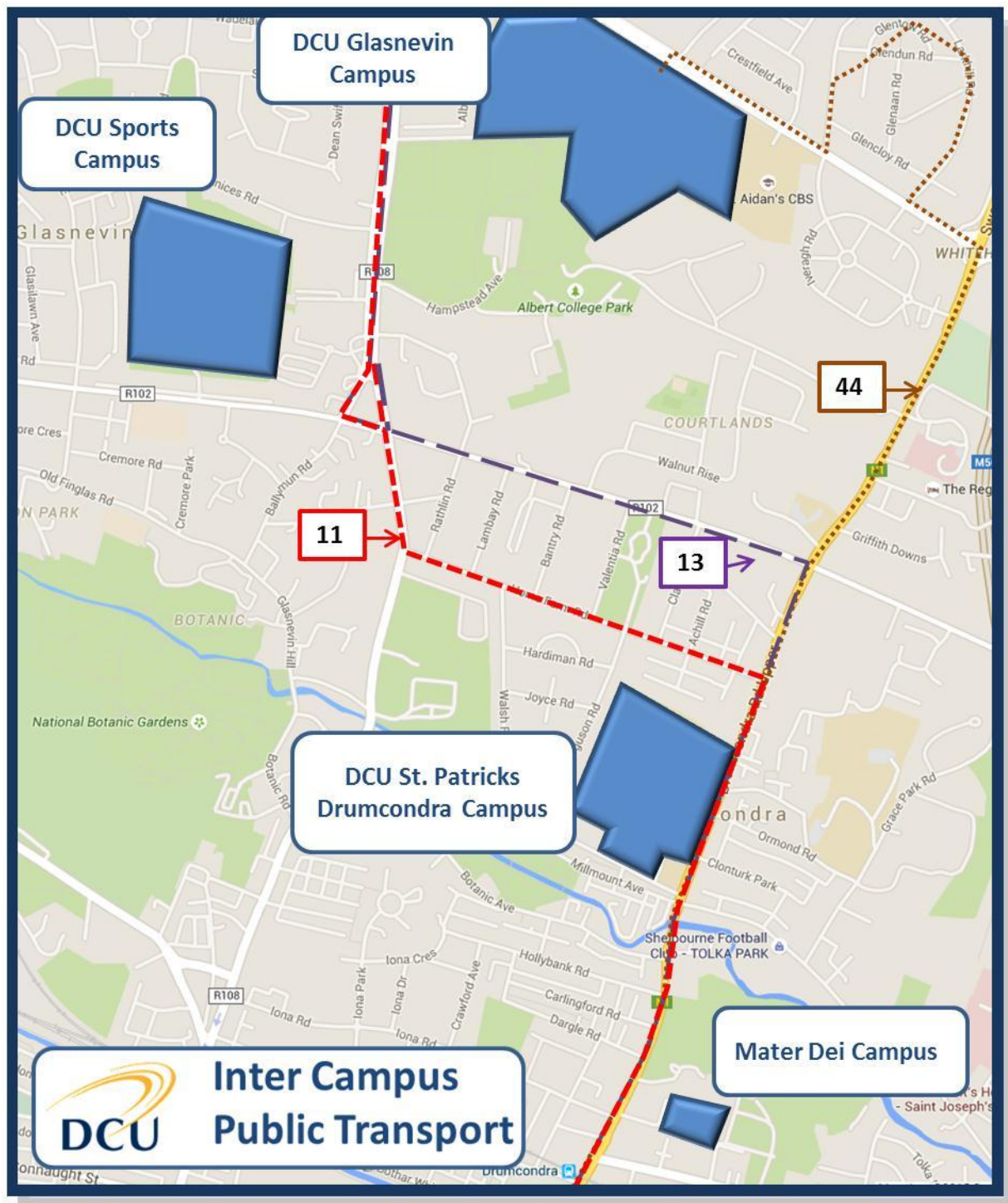
Cycling times to DCU  
St. Patrick's Campus











### 3. Issues and Resolutions

3. What problems have been encountered and what solutions have been put in place to try and mitigate these problems?

- There have been several issues some which may seem to other more of a blessing than an issue. These issues include large number of students on the Green Committee.

Subcommittee were established to manage these numbers and this has proved somewhat successful – however as there are several of the themes that are cross linked this can prove difficult and it does require considerable management to ensure progress across all the working groups. In 2015/2016 it is proposed that the student element of the green committee would convene under the DCU Green Environmental Society and as such may be able to draw down some funds from the SU to support some activities. This Society would then put forward representatives to the DCU Green Committee.

- A more strategic link is required with the ongoing operations of the University. It would be really useful if DCU Estates had an annual plan of which projects/areas they wish to focus on so that this could be supported by the Green Committee delivering long term impact for all. We are working with Estates to try and develop such plans.
- The DCU Community Garden is a 1.6 acre site that required major resources (time and money) to efficiently operate the garden. We have struggles to maintain consistent and regular student engagement. We understand that students are on campus for two 12 week semesters and after week 4/5 assignments and end of semester exams start to loom and there is a reduction in the engagement with the garden. Also we had been working with the Ballymun Whitehall Area Partnership who provided fantastic support through their TUS Horticulture programme in the garden but unfortunately that has now finished and BWAP has also been wound down. We are however very fortunate to have three CE placements from Ballymun Welfare rights and are starting to work with the Tolka Area Partnership with the potential to foster great community engagement with the garden. Finances for the garden are also difficult but we are working with the green committee to develop a list of all grant schemes for which we can apply for funding. We hope to be successful in some !

#### **4. Action Plan for 2015/2016**

The DCU Green Committee endeavours to keep our Action Plans up to date. They are available on a share drive for individuals to update. This sometimes does happen. We also keep all of our action plans together i.e. We carry forward last year plans to ensure that where projects have not been finished that they are not forgotten and have to be reinvented. Attached is the most recent version of the Action plan (Appendix 2). As we have not as yet formed the Green Committee for 2015/2016 this has not been agreed yet but there are some proposed projects.

#### **5. Monitoring and Evaluation**

5. How has progress been monitored and evaluated since receiving the Green-Campus award? Briefly describe the results of monitoring and evaluation.

##### **Energy**

DCU continues to work toward its agreed target of 33% energy reduction by 2020 on 2010 figures. Several initiatives across the campus support the achievement of this target including awareness

campaigns from the DCU Green Committee on last out lights out. The overall monitoring of the total energy consumption is carried out by DCU Estates and the e3 project. As can be seen from section 2 we are continuing to reduce our overall energy consumption.

# Last one out?



# Lights out!

Turning off the light will save money and help reduce carbon emissions. Please help us protect the environment.

Thank you from the DCU Green Committee

Figure 11: Poster for last out lights out

As part of the Last Put Lights Out project all students were advised at orientation and poster were placed around campus. To assess the impact Mariane Galop undertook to monitor the number of rooms with lights left on over Semester I. The preliminary data would indicate that further work need to be done. Mariane reported that she believe that there was a significant difference between undergraduate, postgraduate and staff and their tendency to turn off the lights. She monitored specific areas frequented by the different groups and she found the undergrads were least likely, postgrads were better and staff were the best. This may well be linked to the individual sense of empowerment to switch off the lights. Further investigation is warranted as to what might be necessary to empower undergrads to save power !!!

In Jan 2015 Daniel Tetis from St. Kevins College on Ballygall Road undertook to work with the DCU Green Committee to carry out a transition year placement. Daniel investigated the lifts at DCU and estimated how much energy could be saved by taking the stairs. Daniel also then designed a poster that could be used to encourage people to take the stairs. There was insufficient time for Daniel to put up the posters and monitor any results. Having shown the poster to several Green Committee members it was agreed that some amendments would be need as we should also consider healthy eating and relating rewards with high sugar/high calorie food is not appropriate. Note this was not Daniels fault he was asked to include them but on mature reflection we thought better. The CG for 2015/2016 will be asked to investigate how one might monitor the impact of this campaign and then deploy it. (for detailed report see Appendix 3)



## Water

There have been several water themed projects over the past year. Unfortunately at DCU we do not have as many measurement sensors for water as we would have for energy. Our initial project was to gather information on the total water consumption at DCU. Invoices were provided by the DCU Estates office and members of the green committee analysed the information as reported in Section 2 above. With this data we will now at least be able to see impacts of projects that are undertaken in the future. Other project that the CG were involved in were investigating water consumption in the sports complex( Clionadh Williams). In this project the pool side consumption is approx 3,000-6,000M3 per annum and Clionadh did a rough calculation of water consumption in the showers based on membership, survey results for times in showers and she measured the volume of water from several of the showers - this calculation estimated that showers in the sports complex consume ~46,000 M3 per annum. This would indicate that the Sport complex consumes 35-40% of the total water on campus. These are estimated calculations and what is really needed is a dedicated meter for the sports complex. Clionadh provided several recommendations on how water consumption could be reduced.

Ross Begg looked at a potential treatment system for RWH in the Community Garden. Working with members of the community garden and the green committee Ross designed a relatively cheap and robust sand filtration system that removed a large portion of contaminant in the water so that it was in essence potable . However without continuous monitoring the water cannot be promoted as potable. Full analysis of the water was undertaken in the DCU Chemistry labs and is available if needed. In addition the potential for rain water harvesting on campus is current being investigated.

Other activities included

### Greenday 2: Water Theme: November 21, 2014

Green Committee held 3 challenges on Greenday 2. The activities were sponsored by Sustainability DCU, SU, Main Restaurant, Nubar and Spar.

Green Committee with the help of Engineering Society used recycled bottles collected in DCU to build rockets. The students launched 10 rockets on the day to raise awareness on water usage. Many students got involved to this successful event. Engineering Society previously created an event for their members to build their own designs and enter the competition.

The rocket challenge was a bit different compared to last year. There were 3 prizes category: Most sustainable rocket, most authentic design and the furthest rocket launched.

Figure 12: Abdul's Water Rocket Challenge



Aim for next year: Do a bigger water rocket event with Engineering Society

Media seems the easiest way to catch students' attention. Therefore, facebook was used to spread information about water. Many were surprised on what they have discovered like how much of water you have to use to flush a toilet and how much water you can save when you shorten your shower time. The winners gained around 70 likes.

Figure 13: Most facebook likes challenge



Like the previous year, sustainability photo challenge required student's participation and their creativity. The task was to take a picture of their most sustainable act. The winners this year showed

very important action regarding on recycling batteries and switching off the lights. Simple images but have big impact on environment and economy.

**Figure 14: The winners of Sustainability Photo Challenge**



Aim for next year: More activities other than photos

### **World Water Day, 22 March 2015**

On 20 March DCU held a Water Day to mark the United Nations General Assembly designated 22nd March World Water Day. DCU Sustainability in conjunction with the DCU Water Institute, DCU Green Committee and Prof. Barry McMullin organised several event including a simulated COP (conference of parties) where staff/student teams representing the under-developed, developing and developed worlds explored solutions to combat climate change by keeping the world's temperature below 2 degrees Celsius. There were approx. 30-40 participants and it worked really well with very strong engagement from all. We hope to repeat this event.

On Friday 20th, Chinatown, the classic film noir starring Jack Nicholson and Faye Dunaway was screened in The Hub. Chinatown is loosely based on the California Water Wars, a series of disputes over southern California water in the early 1900s which resulted in the construction of the Los Angeles Aqueduct to relieve pressure on the city's water supply.

A water rocket-launching competition took place from 12 noon to 2pm in the main DCU mall. The water rockets use water and pressurised air to launch a recycled plastic bottle. Staff and students alike are encouraged to design, create and launch their own rockets using recycled plastics bottles and harvested water from the DCU Garden. Instructions for the construction of the rockets were sent to both St. Aidan Secondary school and St. Patricks National School Drumcondra and they were invited to design build and come along to DCU to demonstrate their rockets.





Figure 15: Participants in WWD 2015 @ DCU

In addition some student at DCU created some water awareness raising clips to coincide with water day and the work they were undertaking at DCU:

Clionadh Williams on Water Consumption in the DCU Sports Complex :

<https://youtu.be/v2-QKv5-Sco>

Ross Begg on a Rain Water treatment system for the DCU Community Garden :

<https://youtu.be/Z3cXX3XBvpk>

Mohammed al Otaibi on Rain Water Harvesting on the DCU Main campus:

<https://youtu.be/uHGSndWCWzk>

## Waste

### Paper waste SU elections

The DCU Students' Union elections of 2014/2015 have just been completed and for the first time ever, voting took place online. With the help of Returning Officer Steven Conlon & the incredible

Mark Glynn from the Teaching Enhancement Unit, a software programme was written that facilitated not only voting but multiple candidate preferences, eliminations & vote transfers. Two referenda were held and there were 27 candidates running for 9 elected positions.

### ***Benefits of eVoting?***

- 19% increase in turnout with the highest total valid poll being 2989.
- NO spoilt ballots.
- NO time spent on potential recounts.
- The results were generated instantaneously once polling closed.
- The system is secure and upholds the integrity of the secret ballot. Votes are not traceable.

### ***Sustainability***

- No printing = 191kg of carbon saved
- The printing of 38,500 ballot papers / 33,000 A4 pages was saved leading to significant economic savings (Est ~€3,000)
- 150 hours of students time was saved from previous yrs where students manned ballot stations & worked on the paper ballot count.

See Info Graphic in Appendix 4

### **Water Bottles/Coffee Cups/Behavioural Change**

In 2013/2014 DCU undertook a project on waste and in the final report (by Aoife Fallon) it was noted that paper cups were not only significant in volume in the overall waste but that they were regularly the primary contaminant of recycled waste. In an effort to reduce the impact of these single items, DCU has brought in their own reusable cups (see Figure below). To promote these reusable cups DCU designed a behavioural change based promotion material to address personal motivating factors (Cody Byrne, Intra Placement with Sustainability DCU). In collaboration with all coffee retail outlets on campus three hundred DCU reusable cups were promoted as either 'saving the planet' or 'saving you money' (as you got a min of 10 off if you bought your own cup). Within two weeks the cups were sold out. Discussions are underway with campus retailers to replenish stocks. It is expected that the introduction of reusable coffee cups will have a significant effect on the 961 cups a day that DCU was sending to landfill however we have been unable to carry out any detailed assessment of this just yet.



Figure 16: DCU Reusable Water bottles and Cups

With respect to water bottles that were brought in in 2013/2014 the vast majority of the original 900 DCU water bottles have been sold by the DCU SU. It is the intention of the income SU to replenish the stock so that similar bottles will be available for 2015/2016. We have not undertaken a review of the waste to identify if there has been a significant reduction in plastic water bottled.

### *Waste in Residences*

Sean Daly in conjunction with management in the DCU Campus residences and support for the DCU sustainability office and green committee undertook to investigate recycling in campus residences. Sean found that the single most important thing to encourage recycling was the provision of information on what could be recycled followed by the provision of appropriate facilities. He also found that the introduction of monetary consequences either disciplinary or reward based in nature would assist in increasing levels of participation in recycling according to the students themselves. A full set of recommendations have been made available to the DCU Campus res.

### *Litter surveys*

As per recommendations from our assessment in July 2014 DCU Green Committee has undertaken several litter surveys across campus. Preliminary results would indicate that overall the level of litter is low however there is consistent evidence of small particle litter like bottle tops/paper bits/chewing gum scattered throughout the campus. The one most prevalent litter is cigarette butts which are particularly plentiful at the entrances to buildings irrespective of the requirement not to smoke within 5m of doorways. Campaigns have been carried out to 'Bin you Butt' but there was no discernible impact. The CG 2015/2016 may wish to consider alternative approaches such as seeking a ban on smoking on campus.

### Pack it up Pass it on

For the second year running we carried out a pack it up and pass it on campaign at the end of semester in conjunction with DCU in the Community. In 2014 there were 127 bags full to the brim of clothes, shoes, bags, and 13 boxes of household items all donated to The Simon Community and St. Vincent de Paul. In 2015 the numbers were not quite as good primarily due to the dates as due to external factors the campaign was run before the end of exams. We did collect 109 bags and 8 boxed of household items. We will ensure that for 2016 the dates are better matched to exam times.



### Adopt A Street: 2014/2015



5 people volunteered to do adopt a street campaign. The aim is to bring awareness to students about cooperation and minimising waste. Aim for next year: Gather more students to do the campaign.

### Biodiversity

There have been many projects undertaken to promote biodiversity on campus. Our leading project is the community garden and the most used word regarding the garden is 'potential' and what fantastic potential there is in it to be developed and unleashed on the DCU staff and students and the local community.

### DCU Community Garden

Major advancement is the community garden include



- 4 Community Employment placement full time in the garden
- Large volumes of fresh fruit and veg available for donations
- Shed semi refurbished
- Full details in the development plan in place (Appendix 5)

### Biodiversity survey

There have been several biodiversity surveys of the DCU campus (copies available) and in summer 2014 the creation of an online database was started to capture scale of biodiversity on campus along with identifying invasive species. In addition in 2014 DCU participated in the first An Taisce Intervarsity BioBlitz identifying 373 unique species on campus. To continue this work Joe Cornish is undertaking a quantitative biodiversity survey was established. A literature review was undertaken of biodiversity in the built environment covering both flora and fauna. The existing database (mainly flora) for species on campus is being built upon by quantifying the volume of said species on campus. This project is still ongoing.

### Sustainable Community Garden

Alan Rigney with the support of the sustainability office and folk from the DCU community garden looked at how a community garden and in particular the DCU community garden could be made sustainable. The DCU Community Garden will ideally be used as a resource for education, research, teaching, training and community engagement, along with the general uses of community gardens such as food production, biodiversity, urban farming and community development. The project engaged both DCU students and the local community.

#### Interest in participation

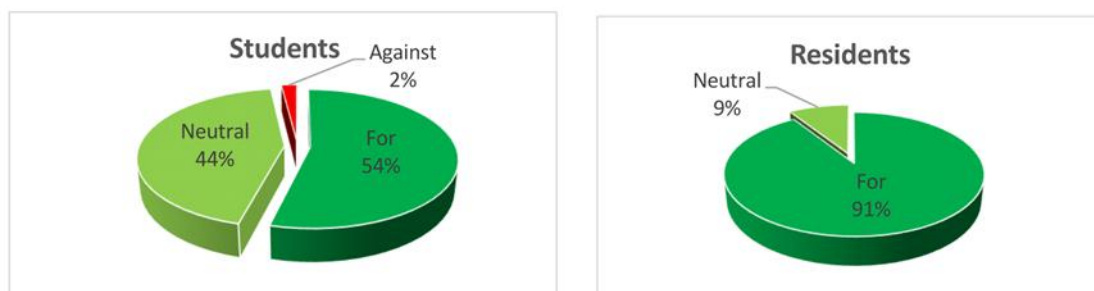


Figure 17: Participation in DCU Community Garden

It also looked at what those who were interested in participating (Figure 17 above) would like to do in the garden (figure 18) and what times they could contribute (figure 19).



### Why participate in the garden

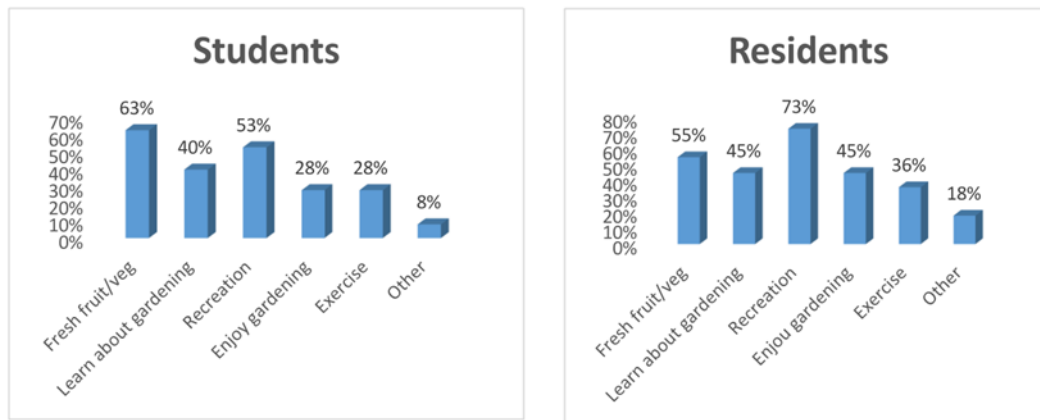


Figure 18: Desired activities in the DCU CGarden

### How much time would you spend a week in the garden

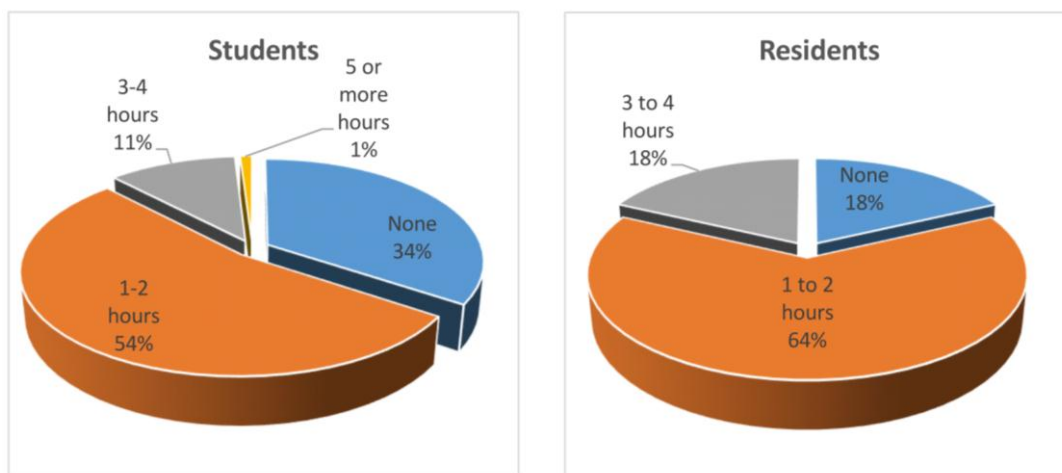


Figure 19: Time commitment to Garden

This data along with information on potential grants available will significantly help with the sustainable management of the garden.

## National Tree Week 2015



There are representatives from different societies, such as Engineering, Caving, Karate, African, Horticulture and Mr. Joe Stokes from Engineering Faculty, participated on National Tree Week. 13 trees sponsored by Students Union were planted in Community Garden DCU.

Aim for next year: Get more students involve in Sustainability DCU and Community Garden. Get a maintenance activity for Community Garden.

A short clip was also developed by green committee members to promote sustainability  
<https://www.youtube.com/watch?v=Y1wTPf2QKBQ>

## Transport

DCU is an active partner in the NTA Smarter Travel Campus Programme. The DCU Mobility Management Plan aims to have 90% of commuters to DCU avail of a sustainable form of transport. In addition in 2015/2016 the DCU Incorporation Programme will bring together St Patrick's College, Drumcondra, Mater Dei Institute of Education and Church of Ireland College of Education with Dublin City University. Significant measures are being made to address these objectives.

Measure to promote active commuting

- Free on-campus shower/changing facilities for all walkers/cyclists
- Additional 410 cycle parking spaces across campuses.
- Designated routes for walking and cycling
- Promotion of health benefits of active commuting
- DCU Bike Scheme

Measures to promote public transport

- A bus every 15 mins between campuses (on average)

- School/Unit Leap cards for intercampus commuting
- Enhanced public transport connectivity including new Bus Terminus on the DCU Campus (Busses 44 and 1.4)
- A shuttle service for 2015/2016 may be considered once numbers are clarified. (To be reassessed in Sept 2016)

#### Alternative Intercampus mobility modes

- GoCar can be used to travel between campuses
- A designated GoCar space to be established on all campuses
- Car Sharing between campuses will be encouraged

#### Car Park Management

- Establish interim Incorporation Car Park (10 spaces DCU Glasnevin /10 spaces DCU SPD) to facilitate first year of incorporation
- Introduce an all campus car park management system
- To enable carpark demand management introduce phased car parking charges over the coming 3-5 yrs

## 6. Community Engagement

6. Please describe any further contacts with the wider community and how existing links have been developed.

Have measures been taken to inform and involve the campus community of the Green Campus Programme? Briefly describe these measures.

#### Community Garden engagement

#### Age friendly University

Encompassing such issues as equal access to social resources, corporate governance, community, diversity, culture and quality of life, social sustainability is one aspect of sustainability but one that is often the weakest in terms of representation. DCU has long recognised the merits and responsibilities of engaging with the wider community and contributing to the social and economic contexts of the community in which we are based. The development of a specific 'Civic Engagement' mission and the establishment of the DCU in the Community Outreach Centre in Ballymun is a solid expression of the commitment which DCU has made to community outreach projects.

The DCU Green Committee/Sustainability Programme has leveraged several of these existing link to enhance our engagement with the local community. We have worked closely with several local organisations including Finglas Bee Association, Ballymun Whitehall Area Partnership, Innovate Ballymun, Ballymun Welfare Rights, Tolka Area Partnership and intend to continue and build on these mutually beneficial linkages.

The Community Garden is now open to all of our community internal and external to DCU. We are working closely with the Age Friendly University Initiative at DCU to support intergenerational learning.

## **7. DCU Green Charter**

The DCU Green Charter has not been updated since it was finalised in 2014. It will be reviewed by the DCU Green Committee in 2015/2016.

Here is a link to the Charter: <http://www.dcu.ie/ocoo/sustainability/sustainable-campus.shtml>

## 8. Appendices

1. Petition for a DCU SU Sabbatical Sustainability Officer
2. DCU Green Committee Action Plans
3. Lift Energy Project
4. SU Election Savings
5. DCU Community Garden Development Plan Apr 2015