

DCU Academic Integrity and Plagiarism Policy

First approved by Academic Council in April 2013

This edition approved by Academic Council in June 2015

Scope of the Policy: This policy and the associated procedures apply to all individuals at Dublin City University engaged in academic work, including all registered students of DCU on both taught and research programmes, and academic staff engaged in assessment of academic work which contributes to an award or credits.

Academic Integrity and Plagiarism: The reputation of Dublin City University and of its graduates depends on upholding the highest standards of learning and research. Students have a right to be assessed on the quality of their own work, and have the corresponding duty to present only their own work for assessment. In this context, 'work' means ideas and concepts as well as their specific expression in words, formula, code, designs, images, sounds and other forms. Students are expected to have read the University-wide statement on academic integrity, plagiarism and referencing techniques for work that is submitted for assessment. Students undertaking research should familiarise themselves with the DCU Code of Good Research Practice and the National Policy Statement on Ensuring Research Integrity in Ireland. In order to avoid any suspicion of plagiarism, a student should:

- in accordance with the University recommended practice, cite the sources of all quotations, paraphrases, summaries of information, tables, diagrams or other material, including software and other electronic media in which intellectual property rights may reside
- when paraphrasing the work of others, use their own words and sentence structures
- provide a complete bibliography of all works and sources used in the preparation of projects, essays or other assignments
- ensure the originality, independence and integrity of their individual submission, even if it has emerged from the context of group study.

1. Academic Integrity: In an academic context, we show respect for the work of others and demonstrate our professionalism by being honest and trustworthy and acting with fairness, respect and responsibility. Practices that undermine or damage academic integrity are unacceptable, and individuals who are found to have engaged in such practices will have appropriate action taken against them.

Practices that breach standards of academic integrity include:

- Submitting other people's work as your own, irrespective of whether you commissioned or paid for the work
- Buying or commissioning work via professional agencies
- Submitting the same or similar work for more than one assessment
- Falsifying research results, data, interviews or other research material
- Providing false information to obtain unjustified concessions.

2. Plagiarism: Plagiarism is the act of taking and using another person's work and presenting it as your own without adequate reference. It includes:

- Reproducing the work of another, even with small changes, without appropriate acknowledgement or referencing, whether the work reproduced is from books, journals,

articles, TV programmes, the Internet, lecture notes, and so on, without use of quotation or citing the source

- Collusion by a group of students to produce/present an assessment or a substantial part thereof, when the examiner required individual research and outcome.

3. Dissemination of Policy: Academic staff delivering a module or supervising research must refer students to, and explain, the University's academic integrity and plagiarism policy. Programme documentation will recommend the DCU Library Guide to Harvard Style of Citing and Referencing (available from the Library's website) and/or the appropriate referencing system required by the discipline.

4. Processes aimed at protecting against plagiarism when submitting assessments

- A. Assessments, submitted physically or on line, will not be accepted or graded unless accompanied by a completed Student Declaration of Academic Integrity [see Appendix A] or the statement from the Academic Regulations for Postgraduate Degrees by Research and Thesis in the case of work submitted for a research award. Students who do not include such a declaration will be required to resubmit according to the School¹ module assessment procedures with a completed University Declaration of Academic Integrity form. The work of any student that does not include such a Declaration will not be marked.
- B. Submitted assessments and theses may be subjected to electronic review and analysed electronically for plagiarised passages, etc.

5. Reporting cases of alleged breaches of academic integrity and/or plagiarism

(The following text on the process for dealing with alleged breaches of academic integrity and plagiarism is outlined in the flowchart in Appendix B.)

If the academic staff member to whom the assessment is submitted is satisfied that there is a case to answer, he/she must complete a report in writing (see Appendix C) to the designated School staff member (for example Programme Chair, School Teaching and Learning Convenor).

The report must include:

- A. The relevant material (dissertations, essays, code, diagrams, video, audio, web pages, etc.), including a web link for Internet sources.
- B. Breaches of academic integrity: an explanation as to how the student's submitted work constitutes a practice that breaches academic integrity and/or plagiarism.
- C. Plagiarism: a brief textual analysis – for example, identical work, or portions of work, from different students; presenting others' work as the students' own; absent or misleading references. Any alleged breaches of academic integrity or plagiarism offence may be referred directly to the University Disciplinary Committee (<http://www.dcu.ie/info/regulations/committee.shtml>). In a case that is considered to be a first offence, an interview may be arranged between the student and the School representative(s) to allow the student(s) concerned to respond to the allegation of a breach, or breaches, of

¹ Please note that where reference is made, in this document, to a School or Faculty this also includes Open Education. Where reference is made to the Faculty Teaching and Learning Committee this also includes the Open Education Teaching and Learning Committee, and where reference is made to the Associate Dean for Teaching and Learning/Education this also includes the Chair of the Open Education Teaching and Learning Committee.

academic integrity and/or plagiarism. Normally this interview will be conducted face to face, but it may, in exceptional circumstances, be conducted electronically (by synchronous or asynchronous means).

In the case of a second offence, i.e. where a student has already been sanctioned at School or University level, his/her case will immediately be referred to the University Disciplinary Committee. Notification of such action must also be sent to the Associate Dean for Teaching and Learning/Education at Faculty level for noting at Faculty Teaching and Learning Committee (notification of final outcome must also be sent by the School representative). All communication with the student will be recorded and copies retained by all relevant parties initially. If the allegation of breaches of academic integrity or plagiarism is not upheld by the Disciplinary Committee all official records of the alleged offence must be destroyed/deleted. If the allegation is upheld by the Disciplinary Committee the records will not be destroyed and will be retained.

6. Student interview process

6.1 Student interview

Prior to an interview being arranged, the student's record must be checked both at local and at central level to ensure there is no previous academic integrity or plagiarism offence. Where a student's record shows no previous breach of academic integrity or plagiarism, and an alleged breach is being dealt with at School level, an interview will be held with that student such that they may answer to the allegation. This interview may be conducted face to face or, in exceptional circumstances, electronically.

The interview panel will involve, at a minimum, the School representative and another academic member of staff (for example, the staff member who identified the alleged breach). As part of the interview process, the student will be asked if they have ever had any allegation of plagiarism or breach of academic integrity upheld before, either in DCU or elsewhere. It will be explained to the student how they have allegedly breached the academic integrity and plagiarism policy. Students are then afforded the opportunity to explain how they did not breach the policy or outline any extenuating or mitigating circumstances involved in their case. Records of the interview must be kept; these records may be electronic or paper based.

The student is entitled to bring an observer to the face-to-face interview, or involve an observer in the interview process taking place electronically. In the case of a face-to-face interview or a synchronous electronic interview, the interview panel must be notified, at least 48 hours in advance, of such planned observer attendance, including the name of the observer and their relationship to the student. In the case of an asynchronous interview being held electronically, the interview panel must be informed that an observer will be involved in the interview process, including the name of the observer and their relationship to the student. This observer may not be a legal representative (see point below).

The student can waive the interview with the School panel and have the matter referred to the University Disciplinary Committee. The matter must be referred to the University Disciplinary Committee if the student retains legal representation, for example a solicitor.

Records of the interview and all communication with the student must be retained initially. If the allegation of breach of academic integrity or plagiarism is not upheld, all records of the alleged instance must be destroyed/deleted. If the allegation is upheld, the records will not be destroyed and will be retained.

6.2 Local penalties

All penalties for breaching academic integrity and/or plagiarism will be greater than the penalty for submitting poor work or none. If the allegation is upheld, local penalties may include:

- A zero mark for an assessment component and a requirement to resit the assessment component. Additional work may be imposed.
- A zero mark for the complete assessment and a requirement to resit the complete assessment. Additional work may be imposed.
- A zero mark for the module and the requirement to repeat the module in the following academic session. Additional work may be imposed.

The full implication of the penalty must be made clear to the student, including potential impact for progression and/or award.

A record of sanction must be kept at Faculty level. Notification of sanction must be sent to the Associate Dean for Teaching and Learning/Education for noting at Faculty Teaching and Learning Committee. Where the allegation is upheld at local level, a flag will be added to the centrally-held student record to ensure that, should a second event occur of this nature, even if in a different School or Faculty, the first incident would be visible. If, when this flag is being added, it is found that the student had not declared a previous finding, the matter will immediately be referred to the Disciplinary Committee for consideration of the plagiarism/breach of academic integrity issue and dishonesty in not declaring the previous offence. If the interviewing panel believes that the range of available local sanctions is not sufficient, the matter will be referred to the University Disciplinary Committee and record of action kept at Faculty level. Notification of such action must also be sent to the Associate Dean for Teaching and Learning/Education at Faculty level for noting at Faculty Teaching and Learning Committee (notification of final outcome must also be sent by the School representative). If the allegation is not upheld at Disciplinary Committee, all official records of the alleged instance must be destroyed/deleted.

Some further guidance on penalties is included in Appendix D.

6.3 Outcome and right to appeal

Students should be informed of the decision promptly in writing and should be informed at this stage that they have the right to appeal the local penalty imposed by the School by appealing to the University Disciplinary Committee.

7. Processes in respect of student research reports

Allegations of unacceptable academic or research practices such as falsification of data are dealt with under DCU's Policy for Responding to Allegations of Research Misconduct.

A judgement as to whether or not plagiarism has occurred is integral to the examination of research reports submitted for formal assessment (such as at confirmation of a research student on the PhD register, and at award stage). The recommendations of the examiners, in line with Academic Regulations for Postgraduate Degrees by Research and Thesis, reflect the outcome of this evaluation.

8. Retrospective detection of plagiarism and/or breaches of academic integrity

In cases where a breach of academic integrity and/or plagiarism is alleged subsequent to the awarding of credit, DCU will invoke this policy, or that on Responding to Allegations of Research Misconduct, and may, if the allegations are upheld and the offence serious, revoke the credits or award given.

Appendix A Student Declaration of Academic Integrity

Students may be required to submit work for assessment in a variety of means, for example physical submission or electronic submission as per the lecturer's instructions. In all cases students must make a declaration of academic integrity, either by physically completing such a declaration and submitting it with their assignment or engaging appropriately with the electronic version of the declaration. Assignments submitted such that the form has not been included, or the electronic equivalent has been circumvented, will not be accepted.

Declaration

Name:

Student ID number:

Programme:

Module Code:

Assignment Title:

Submission Date:

I understand that the University regards breaches of academic integrity and plagiarism as grave and serious.

I have read and understood the DCU Academic Integrity and Plagiarism Policy. I accept the penalties that may be imposed should I engage in practice or practices that breach this policy.

I have identified and included the source of all facts, ideas, opinions and viewpoints of others in the assignment references. Direct quotations, paraphrasing, discussion of ideas from books, journal articles, internet sources, module text, or any other source whatsoever are acknowledged and the sources cited are identified in the assignment references.

I declare that this material, which I now submit for assessment, is entirely my own work and has not been taken from the work of others save and to the extent that such work has been cited and acknowledged within the text of my work.

I have used the DCU library referencing guidelines (available at <https://www101.dcu.ie/library/Citing&ReferencingGuide/player.html>) **and/or** the appropriate referencing system recommended in the assignment guidelines and/or programme documentation.

By signing this form or by submitting material online I confirm that this assignment, or any part of it, has not been previously submitted by me or any other person for assessment on this or any other course of study.

By signing this form or by submitting material for assessment online I confirm that I have read and understood the DCU Academic Integrity and Plagiarism Policy (available at <http://www.dcu.ie/registry/examinations/index.shtml>).

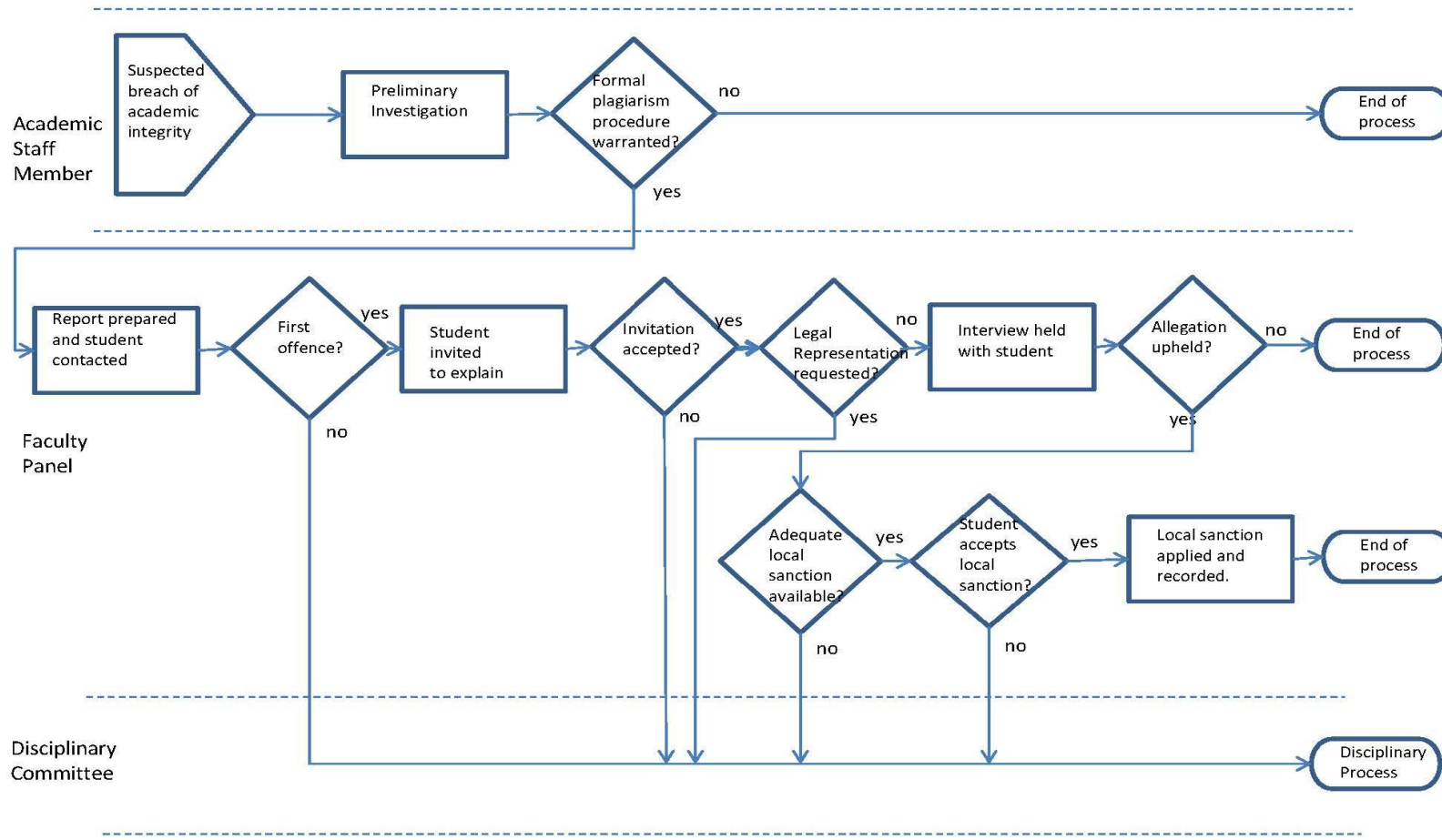
Name: _____

Date: _____

Appendix B

Appendix B

DCU Alleged Breach of Academic Integrity Process
Version 2.2 March 2013 Sheet 1 of 1



Appendix C

Complete section A, B/C, D and E

SECTION A:

Provide the following details:

Student ID			Date	
Student name				
Programme		Year²		Module
Lecturer/Tutor, etc.³			Plagiarism Representative	

SECTION B: ALLEGED BREACH OF ACADEMIC INTEGRITY

Indicate as appropriate:

Submission of work not the student's own, irrespective of whether the student paid for or commissioned this work	
Commissioning or buying of work via professional agencies	
Submission of same/similar work for more than one assessment	
Falsification of research results, data, interview or any other research procedure	
Provision of false information to obtain unjustified concessions	
Other (provide a description of the breach of academic integrity)	

² In the case of modular, continuous or part-time programmes, indicate in years the length of the student's registration on the programme, e.g. first year of registration, second year of registration, to clarify the student's academic record/experience to date.

³ Usually programme chair, module co-ordinator, teaching convenor, etc. Please contact Head of School/Head of Open Education for details.

SECTION C: SUSPECTED PLAGIARISM

Indicate as appropriate:

Reproduction of work (even with small changes) of another, sourced from books, journals, articles, multimedia files, lecture notes, the Internet, etc., without appropriate acknowledgement to the author(s) of that work	
Collusion by a group of students to present an assessment, or a substantial part thereof, when the assessment required individual research and outcome to be presented	
Other (provide a description of other alleged plagiarism activities)	

SECTION D:

Describe the alleged breach or suspected plagiarism involved, providing excerpts or examples as appropriate which demonstrate or represent the same.

--

SECTION E:

Attach all relevant material (in the appropriate format) relating to the alleged breach of academic integrity or suspected plagiarism.

Appendix D Possible penalties

The local penalty for breaching the DCU Academic Integrity and Plagiarism Policy will be proportionate to the nature and scale of the offence.

Offences committed in later years of an undergraduate programme will generally be regarded as more serious than similar offences in earlier years.

Graduate students are generally expected to have a much greater understanding of academic integrity and plagiarism and the consequences of breaches than are undergraduates.

In egregious cases, the University Disciplinary Committee may impose higher sanctions, including suspension from the University for a year or permanent exclusion from the University.

Sample Offences	Possible Penalty
A first occasion of unattributed copying by a student	A zero mark for an assessment component and a requirement to resit the assessment component. Additional work may be imposed.
Minor plagiarism (for instance, on the scale of one or two short unattributed phrases or sentences within a larger body of work) or associated unacceptable practices	A zero mark for an assessment component and a requirement to resit the assessment component. Additional work may be imposed.
Significant plagiarism (for instance, on the scale of more than two unattributed phrases or sentences) or associated unacceptable practices, especially within an assignment with significant weighted contribution to the overall module mark	A zero mark for the complete assessment and a requirement to resit the complete assessment. Additional work may be imposed.