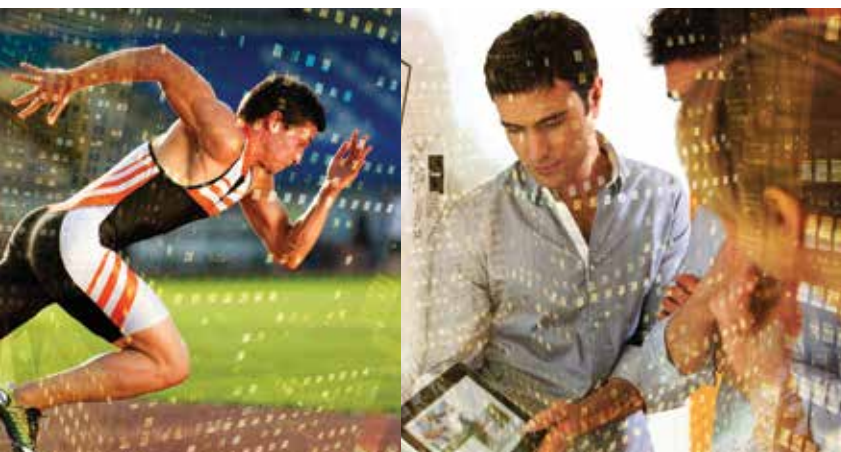


The Insight Centre for Data Analytics (Insight)

Insight is one of the biggest data analytics centres in Europe. It undertakes high-impact research, seeks to derive value from Big Data and provides innovative technology solutions for industry and society by enabling better decision-making.



Centre for Data Analytics



With €88 million in funding, Insight has 350 researchers across areas such as connected health, decision analytics, social media analytics, smart cities and the semantic web.

Research Areas

- > Linked data
- > Semantic web
- > Machine learning and statistics
- > Media analytics and personal sensing
- > Optimisation and decision analytics
- > Recommender systems

Research programmes

Innovative Insight solutions have included using data to:

- > Develop products and services based on matching users' short- and long-term needs to a real-time picture of information and opportunities
- > Understand customer behaviour to increase customer satisfaction, experience and loyalty
- > Drive recommendations and support decision-making
- > Find optimal solutions to complex problems
- > Automate business processes

Academic partners

- > University College Dublin
- > Dublin City University
- > NUI Galway
- > University College Cork
- > Maynooth University
- > The Royal Irish Academy
- > Tyndall National Institute
- > Trinity College Dublin

Industry and commercialisation

Insight offers data analytics solutions for a broad range of industry partners in ICT, healthcare, retail, finance, media and public services. Insight's expertise includes the whole data value chain, from the integration of multiple heterogeneous data sources to discovering patterns and trends in data and making sense of them.

Industry partners include:

- › Avaya
- › Cisco
- › Elsevier
- › Flashpoint
- › HP
- › Irish Rugby Football Union
- › Microsoft Ireland
- › NitroSell
- › Performance Tracking Solutions
- › RTÉ
- › Shimmer Research
- › The Irish Times

Facilities

- › Software lab space
- › Environmental lab space



Key Contacts

Oliver Daniels

Chief Executive Officer
oliver.daniels@insight-centre.org

Michael Turley

Chief Operating Officer
michael.turley@insight-centre.org

Eamon O’Doherty

Head of Business Development
eamon.odoherty@insight-centre.org

Prof Barry Smyth

University College Dublin
barry.smyth@insight-centre.org

Prof Alan Smeaton

Dublin City University
alan.smeaton@insight-centre.org

Prof Brian Caulfield

University College Dublin
brian.caulfield@insight-centre.org

Prof Barry O’Sullivan

University College Cork
barry.osullivan@insight-centre.org

Prof Pádraig Cunningham

University College Dublin
padraig.cunningham@insight-centre.org

Prof Stefan Decker

NUI Galway
stefan.decker@insight-centre.org

Insight Centre for Data Analytics

O’Brien Centre for Science
Science Centre East
UCD, Belfield
Dublin 4, Ireland
+353 1 896 3030

NUI Galway
IDA Business Park
Lower Dangan
Galway, Ireland
+353 1 896 3030

insight-centre.org
info@insight-centre.org

twitter.com/insight_centre
facebook.com/Insight
linkedin.com (Insight Centre for Data Analytics)
youtube.com/user/TheINSIGHTCentre
vimeo.com/insightcentre

Western Gateway Building
University College Cork
Western Road
Cork, Ireland
+353 1 896 3030

Dublin City University
Glasnevin
Dublin 9, Ireland
+353 1 896 3030



Wilton Park House,
Wilton Place,
Dublin 2, Ireland

Tel: +353 (0)1 6073200
Fax: +353 (0)1 6073201
Email: info@sfi.ie
www.sfi.ie