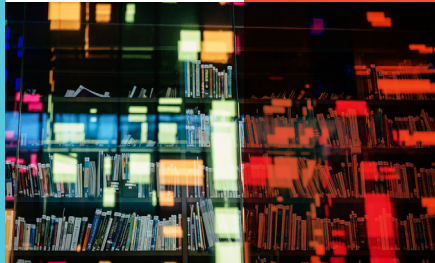




Ollscoil Chathair
Bhaile Átha Cliath
Dublin City University



DCU Access Service Access Entry Route 2019

†SEIRBHÍS TACAÍOCHTA AGUS FORBARTHA
STUDENT SUPPORT AND DEVELOPMENT





Access Entry Route to DCU 2019

- To support students from socio-economically disadvantaged backgrounds and communities where there is little tradition of participation in higher education

What are the benefits of our additional entry route for eligible applicants?

- Opportunity to compete for reduced points places in University
- Opportunity to compete for on-campus subsidised accommodation*
- Places on every course in DCU
- Academic, social, personal & professional support when in college
- Financial support in college (based on individual needs)

*Students must gain their own places (not reduced points) and live outside commuting distance (45kms) to be considered for subsidised accommodation.

Application Deadline:

Closing date for applications is 4.00pm, Friday 26th April, 2019

Applications can be completed online at:

dcu.ie/access/dcu-access-entry-route.shtml

How do we decide who is eligible?

Applicants for entry through the DCU Access Scheme must meet indicator one, plus two or more of the following, social and cultural indicators, one of which must be from 4, 5 or 6 to be eligible:

1. Family income in 2017 was less than or equal to the limits shown in the table below.
2. Family received a means-tested payment from the Department of Social Protection for at least 26 weeks in 2017.
3. You or your Parent(s)/Guardian(s) have a Medical Card/GP Visit Card valid on 31st December 2018.
4. Belong to a socio-economic group under-represented in higher education.
5. Live in an area of urban or rural concentrated disadvantage.
6. Attended a DEIS (Delivering Equality of Opportunity in Schools) school for a minimum of five years.

Number of dependants in your family	Income Limit
Fewer than 4	€45,790
4-7	€50,325
8 or more	€54,630

Add €4,670 to the total income for every sibling/parent enrolled in a full-time college, university or post Leaving Certificate course

For more information contact the DCU Access Office:

Jennifer Collins

T 01 700 8052

E jennifer.collins@dcu.ie

Colette Keogh

T 01 700 8868

E colette.keogh@dcu.ie

DCU Access Service
dcu.ie/access