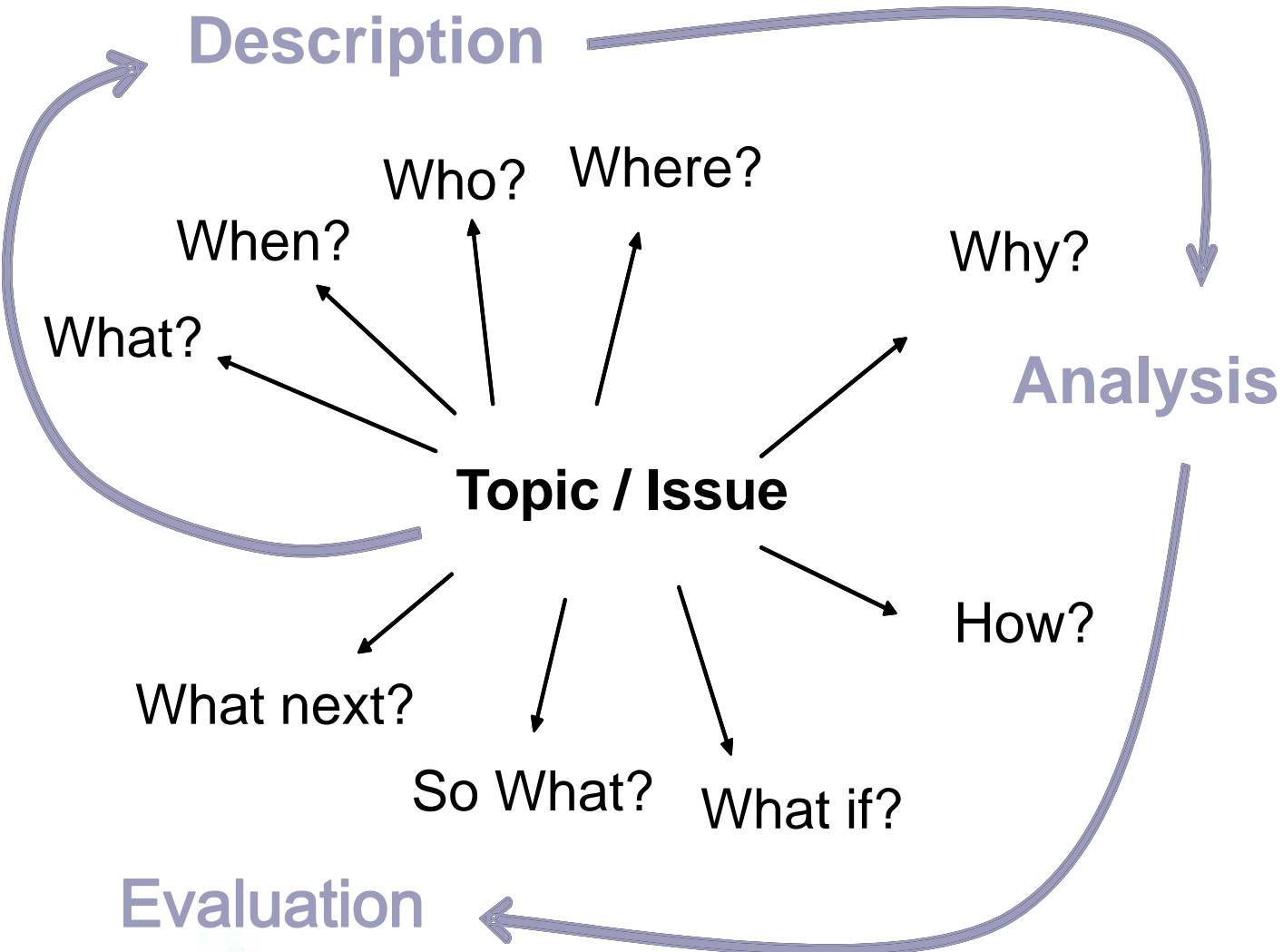


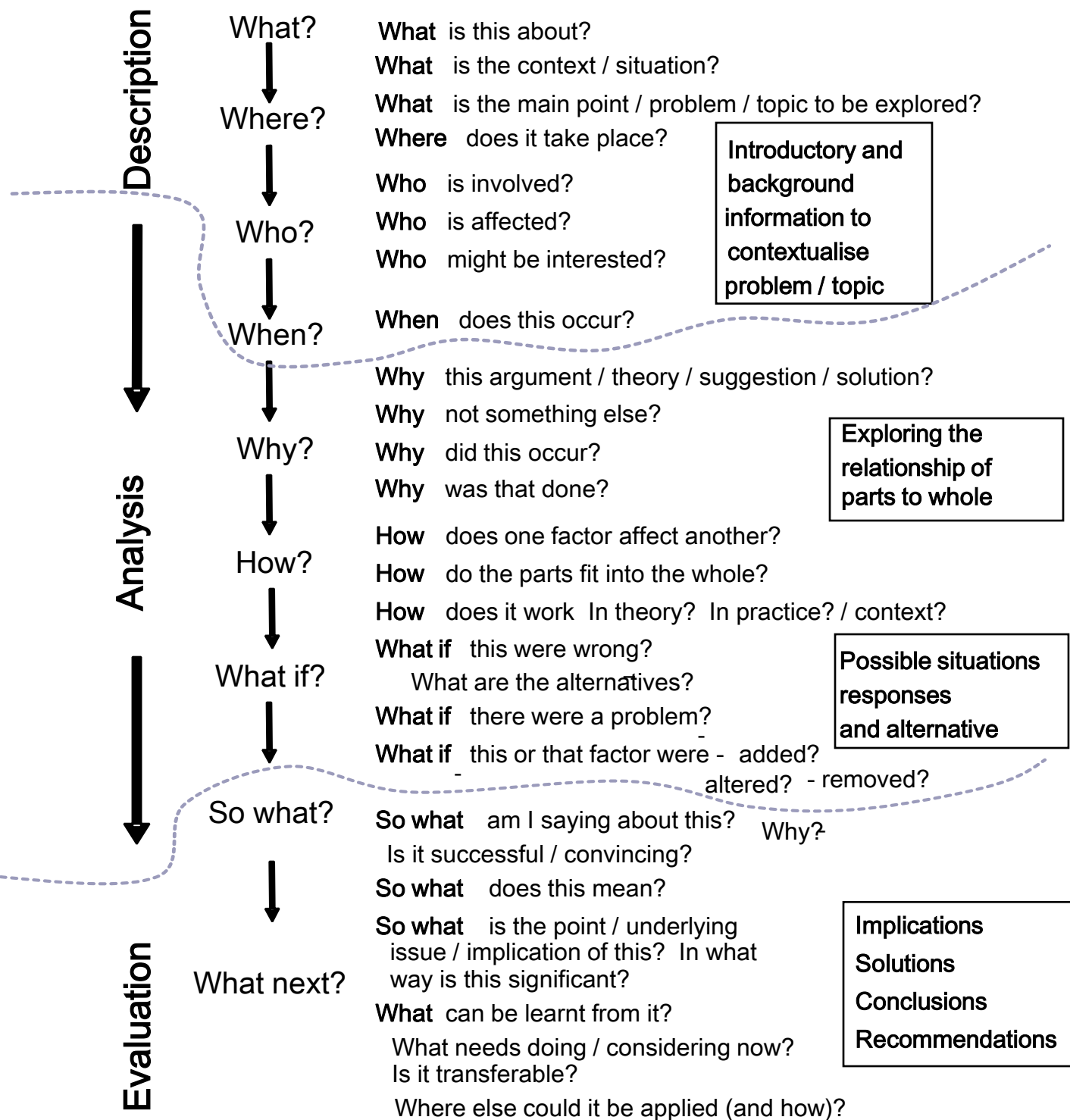
Model to Generate Critical Thinking



Copyright 2003 Learning Development, University of Plymouth

The full guide on Critical Thinking can be found on the University of Plymouth Learning Development site at <http://intranet.plymouth.ac.uk/learndev> or by request from the Learning Development team by emailing learn@plymouth.ac.uk





Copyright Learning Development, University of Plymouth, 2006

Model to Generate Critical Thinking

The LearnHigher CETL is a collaborative partnership between sixteen HEIs. Plymouth's contribution is in the area of critical thinking and reflection. For more information please go to:

<http://www.learnhigher.ac.uk/>

